



**Essential Today.
Essential Always.**



STRENGTHENING FAMILIES



Row 1 (left to right): Mae Bennett, Strengthening Families; Dave Saginor, Shuttle-On-The-Go Driver; Abbey Guggenheim, Volunteer Driver; Row 2 (left to right): Lynndsi Musacchio, Caring at Home; Sue Roth, Volunteer Driver; Megan, Horvitz YouthAbility Ambassador; Row 3 (left to right): Janisse Nagel, Strengthening Families; Dr. Michael Singerman, Volunteer Podiatrist; Rod Parks, RN, Achieving Potential; Row 4 (left to right): Caroline Carbone, Achieving Potential; Becky Rinaldi, Achieving Potential; Dr. Dennis Grossman, Volunteer Physician; Row 5 (left to right): Chuck Apple, Volunteer Driver; Galina Pylpiv, Caring at Home; Hanna Naaman, Caring at Home

Jewish Family Service
Association of Cleveland
helps individuals and
families with solutions
to face life's challenges
with confidence.



A Message from the Board Chair and President & CEO



*Dan Zelman
Board Chair*



*Susan L. Bichsel, PhD
President and CEO*

As 2020 started, we were celebrating a successful rollout of our federal grant to provide care and support to individuals and caregivers coping with the effects of Alzheimer’s disease and dementia. Our Horvitz YouthAbility program was preparing to take its annual trip, this year to the shores of South Carolina, when we learned that Governors in both Ohio and South Carolina were enacting travel restrictions due to the threat of the virus known as Covid-19. And from then on, things changed faster than we could ever have imagined.

On-site JFSA services were quickly transitioned to telehealth where possible; Café Europa, a weekly get-together for Holocaust survivors held for over 25 years consecutive years, could no longer convene in person. Plans were hastily made to find a way to support our homebound Holocaust Survivors, to remind them they were not alone, and they were not forgotten. Nine hundred and seventy meals a week needed to be delivered, despite the fact that delivering them was now more complicated, requiring PPE and hand sanitizer. Fewer volunteers were willing to deliver, but those that stepped forward did so in a big way.

Essential Today.

Each week our direct support professionals provide over 10,000 hours of care in 60 residential sites, and they have found a way to do this despite fewer staff, more illness, and greater restrictions in the community.

While some staff were understandably concerned for their health, many more stepped forward and delivered care with strength and determination, despite underlying concerns or fears. Each week our direct support professionals provide over 10,000 hours of care in 60 residential sites, and they have found a way to do this despite fewer staff, more illness, and greater restrictions in the community.

Individuals with disabilities, isolated from family, needed to know they were not alone. Three hundred frail elderly, homebound and alone, relied on staff to show up, check in and care for them. And they did.

We salute our staff today as we look back at this remarkable year in review. We invite you to read their stories of commitment, resilience, teamwork and compassion.



Dan Zelman
Board Chair



Susan L. Bichsel, PhD
President and CEO

Essential Always.

a year of challenges

Despite the hardships and personal health risks, JFSA staff and volunteers have continued to perform their jobs throughout the COVID-19 pandemic. These hardworking individuals care for those who are most vulnerable: adults with developmental disabilities or mental illness, older adults, Holocaust survivors, and individuals and families facing homelessness and domestic violence. Their resilience, teamwork, commitment and compassion distinguish JFSA in the community.

“We can’t just close shop and stay home.”

CAROLINE CARBONE, OPERATIONS MANAGER, ACHIEVING POTENTIAL

The day after the state shut down, Achieving Potential staff convened to identify the many steps that needed to take place in order to ensure the safety of over 130 adults with developmental disabilities living in over 60 supported living sites throughout Northeast Ohio. That included purchasing enough face masks, gloves, hand sanitizer, thermometers and other personal protective equipment (PPE) for over 250 health care workers to use on a daily basis. It also meant that every home had enough groceries and pantry items, despite the early run on supplies at grocery stores.

“Everyone rose to the challenge,” says Caroline Carbone, office manager. Undeterred by scarce inventories, the staff made their own CDC approved cleaning solutions and purchased empty plastic bottles in bulk from Walmart. Instead of traditional retailers, the staff found toilet paper and other items at office supply stores. “We got really creative. We shopped all over town at different times of the day and evening to keep our inventories sufficient.”

The pandemic also impacted staffing at the group residences, since many direct support professionals (DSPs) were either vulnerable to



the virus themselves due to age, or had school aged children who suddenly were quarantined at home. “We reimagined working shifts, instead of scheduling eight hour shifts, we did four hour shifts. Plus we trained and certified office staff to serve as DSPs.”

“It took a lot of thinking and creative problem solving, but nobody complained. We all had friends who had lost their jobs, so we were grateful that we still had our jobs and could continue to care and protect our clients.”



“It was very scary in the beginning. It made me think back to the early days of HIV.”

ROD PARKS, RN, DIRECTOR OF NURSING, ACHIEVING POTENTIAL

Rod Parks, a JFSA employee for 19 years, says the COVID outbreak was frightening because nothing was known about it, there is no cure, and it is airborne. Many of JFSA residential clients who have developmental disabilities are unable to communicate about their physical issues, which limits how to determine if someone might be infected.

Early on, Rod was the first nurse to be trained to conduct the COVID test. “I couldn’t risk

my nursing staff becoming infected, so I did all the testing for Residential, Mental Health, Older Adults and Caring at Home staff.”

In addition to testing staff, Rod reduces the staff’s anxiety by instructing them on how to protect themselves and their families. “Wear a mask, wash your hands, wear gloves and eye protection,” he counsels them. “Do nothing in a hurry and you’ll be safe.”



“I thought this would end by May, but that didn’t happen.”

GILDA KATZ, LISW
HOLOCAUST SURVIVOR PROGRAM COORDINATOR, CARING AT HOME

Since March, Gilda Katz has observed the direct impact the pandemic has had on Holocaust survivors. As a program coordinator, Gilda works with a team of case managers that provide support to nearly 700 aging survivors. “My first reaction to the pandemic was finding out just how dangerous and contagious the virus is and what that meant for survivors,” she recalls. For some, the severe isolation triggers memories of being hidden during the war. Gilda also noticed the debilitating effects that social isolation can have on an individual’s cognitive abilities. “I didn’t expect the decline to happen so quickly,” she remarks. “They don’t remember things as well, they don’t have the same enthusiasm as before. I can really see a difference.”

When the popular Café Europa weekly social program for survivors was suspended, she knew the lack of a social outlet for survivors

would be upsetting for them. Referring to the program’s success, Gilda says “We originally thought ‘It’s not the program, it’s the pastry!’”. Building on that assumption, the staff started making weekly deliveries of pastries, greeting cards donated by the community, fresh flowers and other items to 35 survivors. Since then, weekly deliveries have expanded to over 100 older adult clients, including non-survivors. Each visit enables older adults to have personal connection with their case manager and alleviates some of the loneliness they are experiencing.

Finding creative solutions during this crisis keeps Gilda focused on adapting programs for survivors to keep them emotionally healthy and safe. “I think about the fact that they have been through so much and have a story to tell,” she says. “They used to say ‘Never forget’, but now it’s ‘Never forget me’.”

“Everyone here works as a team. You don’t get that everywhere.”

BRANDI CLIFFORD, REGIONAL COORDINATOR, ACHIEVING POTENTIAL



When Beachwood House residents became COVID positive, Brandi Clifford’s first reaction was, “Ok, let’s handle this.” All seven residents, adults with intellectual disabilities, were ill as well as many of the staff. Five staff members had to quarantine at home for 14 days, creating a staffing challenge for the 24/7 supported living site.

“We got help from other residential sites and worked through the 14 day quarantine, despite the risk,” she says. “We were so short-staffed, I had 60 and 70 year old women pulling double shifts. One worked the entire quarantine. They just let the risk to themselves roll off them.”

Brandi notes that aside from wearing PPE, the residential staff jobs didn’t change. Clients still needed to be fed, assisted with bathing and dressing, and communicated with during the day. Although the clients looked puzzled at the gowns and masks, they got used to it and looked forward to daily activities, no matter how restricted. “It was a very difficult time with new and scary challenges, but pulling together, we got through it!,” says Brandi.

“We all had a huge learning curve when the pandemic hit.”

JANISSE NAGEL
FORWARD FOCUS PROGRAM DIRECTOR,
STRENGTHENING FAMILIES



Even though JFSA’s Forward Focus financial literacy program was already well-positioned to address the financial challenges of families, the onset of the pandemic created the need to stay current on government and corporate assistance programs. According to Janisse Nagel, Forward Focus program director, “People didn’t know they could still get unemployment dollars even if their jobs were only partially cut. Many people didn’t know about special programs offered through credit card companies, banks, and utilities to address their financial distress.”

Not surprisingly, the impact of the pandemic added a layer of anxiety with employment

uncertainty and food insecurity for families already facing financial hardships. “When your personal finances are affected, you become overwrought. Working with other community resources, we were able to help families by giving them objective information and options to make good decisions,” says Janisse. As the pandemic continues, the program staff is gearing up for a likely wave of new families needing help as a result of the end of the national rent moratorium on December 31, 2020. “We’ll continue to stay on top of resources and help families get the benefits for which they are entitled,” says Janisse.

“My wife has lung issues and every time I went out I knew it could cause problems. But I felt I was serving a good purpose and doing more for the community.”

DAVE SAGINOR, JFSA SHUTTLE-ON-THE GO! DRIVER, CARING AT HOME

Dave Saginor began his three year tenure with JFSA as a home delivered meals driver and a driver for Holocaust survivors. He also serves as a friendly visitor to many older adult clients. “It’s very frustrating. I used to be able to walk into a client’s home and have a chat or go walking with them; now they can’t leave their apartment or receive visitors,” he says.

For now, Dave can only have minimal physical contact with clients and follows

strict protocols to keep them safe. The shuttle van, which seats nine passengers, only takes two clients per trip to medical appointments. Dave wipes down the seats with sanitizer after every trip and always wears gloves and a mask. Still, he has continued to connect with clients with monthly phone calls. “I like to speak with them. They know society is still going on. I like to think we bring a light to them.”





“Once we realized people weren’t going out, we found ways to connect.”

LORNA CHERNOMORETS
CAMPERSHIP OUTREACH
PROGRAM COORDINATOR,
EMPOWERING YOUTH

Each summer, approximately 100 unaffiliated Jewish children and teens receive sponsored camperships at a four or six-week Jewish overnight camp, where they connect to their Jewish heritage and culture. But when the Jewish summer campership program staff learned that summer camps would be closed due to the pandemic, they re-imagined activities they could offer campers. “All the kids were devastated—many had been attending camp each summer and really looked forward to it,” says Lorna Chernomorets, program coordinator. The staff identified creative ways to keep students connected during the summer, including a t-shirt design contest and leadership programs for older teens with the Jewish Education Center of Cleveland. Staying

connected to parents was equally important. “We made phone calls every two weeks and scheduled socially distant family meetings in driveways to see how families were coping and if they needed any help from JFSA,” says Lorna.



“She didn’t have local family—we became her family.”

LYNNDISI MUSACCHIO
CASE MANAGER, CARING AT HOME



When Lenora* (of blessed memory), a Holocaust survivor, tested positive for COVID, she was not alone. A team of JFSA home care staff cared for her 24 hours a day, seven days a week. Lenora was diagnosed soon after being discharged from a rehab facility, but didn’t need to be hospitalized. Lynndisi Musacchio, case manager, has coordinated Lenora’s care over the past two years. “I was nervous when we found out she had COVID,” says Lynndisi. “It made me sad because only the home health aides could go into her home to care for her. I wanted to be with her in person.”

Home health aides Luba and Hanna understood the risks, but didn’t let the virus keep them from caring for Lenora. “I wasn’t scared,” says

Hanna. “We just had to be more careful, wear special masks, gloves and gowns.” Luba remembers, “We were constantly cleaning and sanitizing her home.” Galina, another one of Lenora’s home health aides, worked overnight shifts five to six days a week. “Even though Lenora had COVID, I couldn’t leave her,” says Galina. “She had nobody else to care for her. She trusted me with everything.”

Sadly, Lenora died this fall at age 98, just seven weeks after recovering from COVID. She still had many health issues that took a toll on her. “She was one of my favorite people,” says Lynndisi. “She had a lot of health troubles, but she was always so pleasant. It was refreshing to be around her because of that,” she says.



Galina Pylypiv



Luba Bresnak



Hanna Naamad

*Name has been changed to protect identity.



“You develop a sense of camaraderie that says ‘we’re all in this together.’”

MIKE AND ABBEY GUGGENHEIM

HOME DELIVERED MEALS VOLUNTEER DRIVERS, CARING AT HOME

Abbey and Michael Guggenheim were visiting Florida last March when COVID broke out. Abbey admits she panicked a bit, not only because of its severity and the unknowns at the time, but also because her college aged children were told to return home. She and Michael had to make their way back to Ohio as well. “In one week, we went from being empty nesters to having everyone living in the house again,” she says, noting that news about the shortage of household supplies didn’t help her mental state. Still, she says the silver lining was “we had three extra months with our kids we weren’t expecting.”

As a JFSA board member, Michael knew the agency would be on the front-lines helping individuals and families face multiple challenges. “Many volunteer drivers are older and could not deliver meals because it was no longer safe for them to do so,” he says.

“It’s something I’ve always wanted to do. It’s one thing to go to a board meeting, but it’s a different experience when you have direct contact with the people being helped.”

Volunteer drivers take special precautions to keep themselves and their clients safe, including wearing facial masks and gloves, and maintaining physical distancing. Michael explains, “In the beginning, clients asked me to ‘drop it at the door and leave’. Overtime they get comfortable and begin to trust you. They look forward to seeing you.” He remembers when he went out of town for a week. “When I returned, everyone on my route said they missed me! That’s when it dawned on me the direct impact we are having on their lives.” Abbey sees the same impact as well. “For some clients, we’re the only human contact they have. Now it’s part of our weekly routine.”



JFSA
CLEVELAND



“I hope that my laughter and smile makes everybody else feel at ease.”

MONIQUE DAVIS, OFFICE MANAGER, JFSA HEADQUARTERS

As an office manager, Monique Davis oversees front desk operations, greeting visitors, answering phones, ordering supplies, and sorting mail. “It was a scary time in the beginning,” she remembers. “I didn’t think it was a big thing until we shut down. I became fearful when I thought about the underlying health issues of my family. But I couldn’t be afraid to come to work. We serve the community and it was bigger than me.”

When the pandemic hit, Monique took on many more responsibilities: taking and logging temperatures for all visitors, staff and clients

entering the building, distributing personal protective equipment (PPE) to home care staff, and accepting in-kind donations from the community. “I was able to get to know our front-line staff better and thank them for what they do. I am also able to assure the people entering the building all the precautions we take to keep our building safe.”

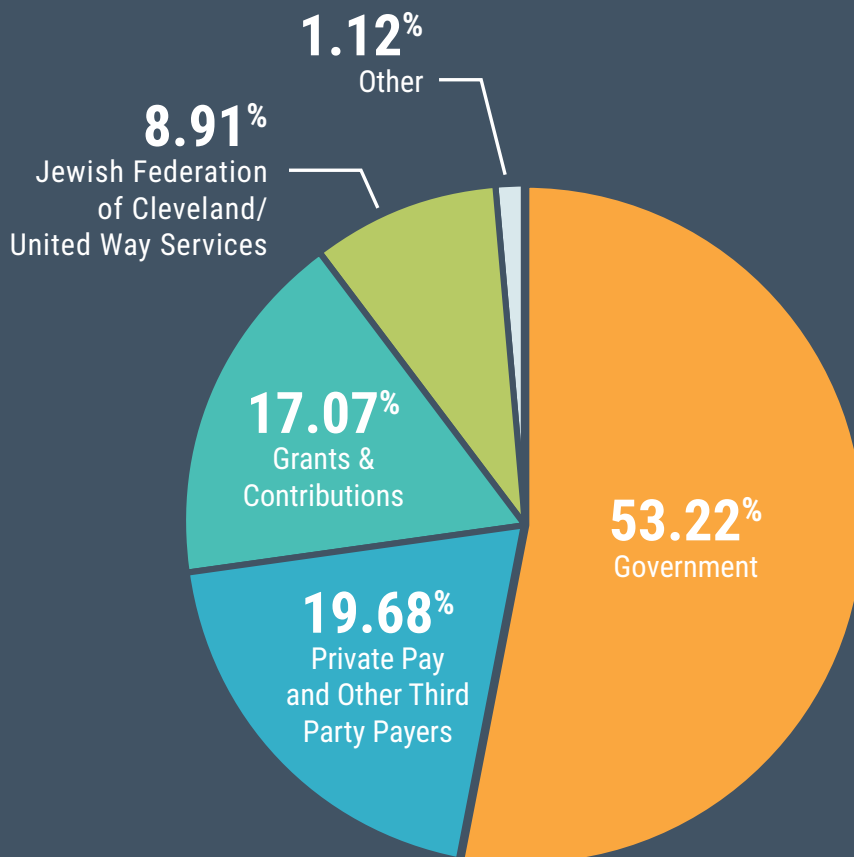
Monique says that working every day has helped alleviate her initial anxiety over the pandemic. “I enjoy seeing people get the help they need, including our staff. My job is to help wherever it is needed.”

Revenue and Expenses from Operations

Year ended June 30, 2020.

Revenue and Funding Sources

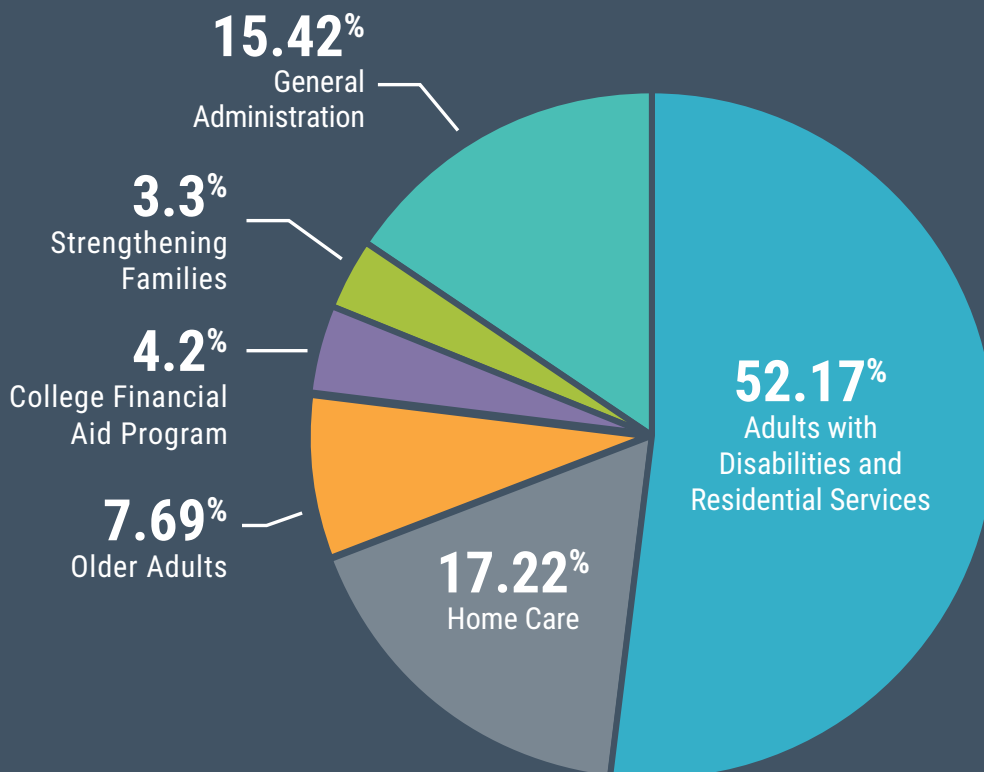
Government (Reimbursement for Client Services)	\$ 16,243,352
Private Pay and Other Third Party Payers	\$ 6,007,815
Grants and Contributions	\$ 5,208,851
Jewish Federation of Cleveland/United Way Services	\$ 2,718,900
Other	\$ 341,120
TOTAL	\$ 30,520,038



Audit is available for inspection at the agency.

Expenses by Major Client Population

Adults with Disabilities and Residential Services	\$ 15,698,771
Home Care	\$ 5,181,565
Older Adults	\$ 2,313,488
College Financial Aid Program	\$ 1,263,805
Strengthening Families	\$ 993,883
Total Direct Services	\$ 25,451,512
General Administration	\$ 4,640,142
TOTAL	\$ 30,091,654



Re[Imagine] the Future

We are grateful to the individuals and families who have helped us re-imagine the future and support our capital campaign.



Capital Campaign Donors*

\$500,000+

Anonymous
The Semi J. and Ruth W. Begun Foundation ●
The Mandel Foundation
David and Inez Myers Foundation ●
Will and Jan Sukenik
Dan and Ellen Zelman Family Foundation ●

\$100,000 - \$499,999

Fran and Jules Belkin
Lynne Marcus Cohen and Philip Cohen
Karen R. Horwitz and Jeffrey Kahn
Jewish Federation of Cleveland
Brian H. Kravitz
Shari and Michael Perlmutter
Enid B. and David M. Rosenberg, MD
Jackie and Fred C. Rothstein, MD and Family
Eileen Sill
William Wortzman

\$50,000 - \$99,999

The Children and Grandchildren of Bob and Eileen Blattner
Cynthia and Robert Bruml and Family
Gerilyn Gleason
Wendy and Richard Halle Family
Marvin and Carol Lader
The Milton and Tamar Maltz Family Foundation

\$20,000 - \$49,999

Sue Frankel
G. Kent and Jerry Hayes
Suellen and Lawrence Kadis
The Family of Norma and Harvey Kotler
Meisel Family Foundation ●
The Alex and Anne Miller Family Charitable Fund/Sally Good/Sid Good
The Weiss Family

\$10,000 - \$19,999

Anonymous
Trish and Mark Adler and Family
Marilyn and Marshall** Bedol
Eileen and Robert Blattner
Marc and Sherri Blaushild
Bonnie and Michael Cole
Elise and Allan Goldner
The Greenberg and Rafal Families
Lori and John Herman
Michael B. Klein
Beth and Ron Levine
Medical Mutual
Donald and Toni Scherzer
Eric Shapiro and Jane Buder Shapiro
Cheryl Davis and Jonathon Wise
Dara and Alan Yanowitz/Donna Yanowitz

\$5,000 - \$9,999

Nan Cohen and Daniel Abrams
Andrew and Joan Kohn
Terri C. Steindler

\$2,500 - \$4,999

Ethan, Gena, Susannah and Avery** Cohen

\$1,800 - \$2,499

Anonymous
The Bichsel Rusnak Family
Leah Weiss Caruso and Rabbi Joshua Caruso
Ginny and Gadi Galili
Kevin, Sheila, Brian and Kaitlyn Margolis
Angela Markowitz
Karen Leizman Moses and Barry Moses
Karen and Norton Newborn
Elisabeth Plax
Sharon and Kevin Robertson
Charles and Maxine** Rosenbaum
Simon Family Foundation ●
John and Linda Wirtshafter

Up to \$1,800

Gary and Janice Bilchik
David Hlavac
Heidi and Bernard Perla
Robert and Sandy Schwartz
Michael Shapiro
Irina Sobornitskaya

If you would like to participate and take advantage of available naming opportunities, contact Karen Leizman Moses, Major Gifts Officer, at 216.504.6407.

Endowment Funds

These funds maintain the principal in perpetuity and allow JFSA to use the income where it is designated. List represents funds as of 6/30/2020. Gifts to these funds are recognized in the general donor listings.

Ascentia Endowment

Supports Ascentia programming and services for people with intellectual disabilities and/or mental illness.

Jewish Federation of Cleveland Ascentia Centennial Initiative Endowment*

Supports Ascentia programming and services for people with intellectual disabilities and/or mental illness. *Funded in large part with gifts from the Aron and Dorothy Drost Centennial Initiative Ascentia Endowment Fund and from Marvin and Carol Lader via the Marvin Lader JFSA Centennial Initiative Ascentia Endowment Fund.*

Deborah Ann Baker Memorial Fund

Supports clients with few financial resources to enjoy quality of life activities. *Gift of Fannie** and Ed** Baker.*

Berns Newborn Thomas Endowment Fund to Support Older Adults in Need

Provides subsidies for services and purchases for needy older adults who strive to remain safely, securely and comfortably in their homes. *Gift of Karen and Norton Newborn. Funded in part with a matching gift from Robert Immerman.*

Stanley and Betty Blum Endowment Fund

Provides JFSA with annual support in perpetuity for any of JFSA's highest priority needs as determined by JFSA President & CEO and/or by any member of the JFSA Executive Team. *Gift of Stanley Blum.***

Irene and Eugene Brudno Fund to Serve Persons with Severe Mental Illness

Supports services for persons with severe mental illness and to fund Ascentia management and infrastructure costs. *Gift of the Irene and Eugene Brudno Charitable Trust.*

Lynne and Philip Cohen Family Fund for Youth Programming

Supports programming for youth. Gift of Lynne Marcus Cohen and Philip Cohen. *Funded in part with a matching gift from Robert Immerman.*

Lois J. and Larry Davis Family Endowment Fund of the Jewish Federation of Cleveland*

Supports Hebrew Shelter Home capital improvements and programming for "at-risk" families. *Gift of Lois Davis.*

Families at Risk Endowment Fund

Supports the Hebrew Shelter Home and Family Violence Services for individuals experiencing homelessness, domestic violence and/or financial hardships and supports KNOW Abuse™ teen outreach and prevention. *Funded in part with matching gifts from Robert Immerman.*

Richard Horvitz and Erica Hartman-Horvitz YouthAbility Program Endowment Fund*

Supports YouthAbility programming. *Gift of Richard Horvitz and Erica Hartman-Horvitz via the Richard Horvitz Centennial Initiative JFSA Ascentia Endowment Fund.*

Immerman Jewish Community Housing Centennial Initiative Endowment Fund*

Supports affordable supportive housing for individuals with disabilities and other at-risk populations. *Gift of Robert Immerman.*

JFSA Permanently Restricted General Endowment Fund

Supports long-term sustainability of the Agency. *Funded in part with matching gifts from Robert Immerman.*

JFSA Volunteer Activities and Education Endowment Fund

Supports JFSA volunteer activities and educational enrichment for JFSA staff supporting volunteer activities. *Gift of Anonymous Donor. Funded in part with a matching gift from Robert Immerman.*

Kesher Fund

Supports programming in the Orthodox Jewish community. *Gift of the Klein, Jaffa and Halpern families.*

Harvey Kotler and Norma Kotler Endowment Fund

Supports Families at Risk Endowment Fund. *Gift of Norma and Harvey Kotler. Funded in part with a matching gift from Robert Immerman.*

MRDD Endowment

Supports programming and residential services for adults with intellectual and developmental disabilities.

PLAN Endowment

Supports PLAN's quality of life programs and holistic recovery services that help those challenged by mental illness and/or cognitive disabilities progress in their recovery. *Funded in large part with a gift from the Maltz Family Foundation.*



Horvitz YouthAbility ambassadors Brittany and Ted took pictures of themselves with their mail-in ballots to encourage other ambassadors to vote.

Cary and Barbara Root Fund for Fostering Ascentia Communications through Technology

Supports funding for communications to Ascentia families. Gift of William Wortzman.

Sarah and Josephine Rosin Fund

Supports programming for individuals with mental disabilities. Gift of the Trustees of the Sarah Rosin Trust.

Abraham and Pauline Segal Fund for In-Home Support of the Elderly

Supports funding for older adults who wish to remain at home. Gift of Rita Saslaw, Michael Saslaw and Maryellen S. Oberman.

The Wirtshafter Family Fund

Provides unrestricted endowment support to JFSA. Gift of John and Linda Wirtshafter. Funded in part with a matching gift from Robert Immerman.

Anne Wortzman Fund for Work, Social and Recreation Skill Building for Persons with Mental Disabilities

Supports programming for individuals with intellectual disabilities and/or mental illness. Gift of William Wortzman.

The Wortzman and Levine Family Endowment Fund in Honor of Susan Bichsel

Provides unrestricted endowment support to JFSA in honor of Susan Bichsel. Gift of the Wortzman and Levine families. Funded in part with a matching gift from Robert Immerman.

Other General Endowment Funds

Established by the JFSA Board of Directors.

- JVS Endowment Fund
- Kaufman Scholarship

Planned Gifts

The following individuals have invested in the future of JFSA through a bequest, gift annuity or other planned gift arrangement. These planned gifts help to secure JFSA's mission and sustain its high-quality programming and services well into the future.

- | | |
|--------------------------------|-------------------------------|
| Anonymous (3) | Rabbi Alan and Jean Lettovsky |
| Hope Adelstein** | Homer McDaniel** |
| Stanley Adelstein** | Jean McDaniel** |
| Irving Bayer** | Patricia and Charles Mintz |
| Marilyn Bedol | Melvin J. Paris** |
| Jules Belkin | Shari and Michael Perlmutter |
| Stanley Blum** | Gwendyolyn Pulos** |
| Eugene Brudno** | Larry Reiss** |
| Irene Brudno** | Gertrude Rice** |
| Michael Bunsey | Sarah Rosin** |
| Michael and Bonnie Cole | Anne Rosenberg |
| Edith Einstein** | Enid and David Rosenberg |
| Louis Einstein** | Phyllis Saul** |
| Peggy Einstein** | Sanford Saul** |
| Gloria G. and Irving B. Fine** | Jean Sinzinger** |
| Marvin Gardener** | James and Myrna Spira |
| Amelia Gluck** | Will and Jan Sukenik |
| Judah L. and Esther C. Hexter | Sally Wagner** |
| Donald and Judy Jacobson | Isaak Wekselman** |
| Judith Kalman | John Wirtshafter |
| Eda Kochman** | William Wortzman |
| Howard Kline | Sandy and Tim Wuliger |
| Marvin and Carol Lader | Renee Zinn |

*Operated under the auspices of the Jewish Federation of Cleveland.
**Of blessed memory.

**Of blessed memory. List represents commitments as of 10/30/2020.

Non-Endowment Funds

These funds have been designated to support specific programs, projects or needs. List represents funds as of 6/30/2020. Gifts to these funds are recognized in the general donor listings.

Hope and Stanley Adelstein JFSA Care at Home Fund

Supports JFSA Caring at Home services for needy adults who wish to remain in their home. *Gift of Hope** and Stanley** Adelstein.*

Trish and Mark Adler Fund for Group Home Residents

Supports quality of life enhancements for residents of supportive living sites and group residences. *Gift of Trish and Mark Adler.*

Alumni and Friends of JFSA College Financial Aid Program Scholarship Fund

Supports qualified undergraduate and graduate college students with the cost of their college tuition. *Gift of individual donors.*

Marilyn and Marshall Bedol Fund for Social and Recreational Programming for the Special Needs Community

Supports social and recreational outings for adults with mental illness and/or mental disabilities. *Gift of Marilyn and Marshall** Bedol.*

Fran and Jules Belkin Creative Arts Fund

Supports creative art, music and theatre programming for JFSA adult clients. *Gift of Fran and Jules Belkin.*

Betty and Nathan Berliner Family Fund

Expands support to Holocaust Survivors through the delivery of kosher food and flowers in recognition of a life cycle event. *Gift of Irving Berliner in memory of his parents, Betty** and Nathan** Berliner.*

Susan Bichsel Discretionary Fund

Supports client needs and staff recognition. *Gift of the JFSA Board of Directors in honor of President and CEO Susan Bichsel.*

Norman J. Danzig Memorial Fund

Establishes the Danzig Award for Lay Leadership and supports the professional development of lay leaders. *Gift of the JFSA Board of Directors in memory of Board member Norman Danzig.*

Wendy and Melvyn Dinner Family Fund in Memory of Hilda and Eli Green

Supports operations at the Hebrew Shelter Home. *Gift of Wendy and Melvyn Dinner.*

Irving and Gloria Fine Fund for Quality of Life Enhancements

Supports quality of life funding for adults with intellectual and developmental disabilities. *Gift of Irving** and Gloria Fine.*

Gloria and Irving Fine Family Advocacy and Support Services Program

Supports Family Advocacy Services. *Gift of the Irving B. Fine Trust.*

The HBSU Fund Supporting the JFSA Communal Fellowship

Provides one and two year opportunities for upper level college students, graduate students and/or prospective students committed to living and learning in a Jewish communal setting supported by JFSA professional staff. *Gift of the HBSU.*

Jean Heflich Employee Recognition and Enrichment Fund

Supports furthering JFSA employees' knowledge and skills, enhancing their careers, augmenting the work they perform and awarding their extraordinary performance in the workplace. *Gift of Jean Heflich.*

Peter Hoke Memorial Fund to Support Ascentia Mental Health Services

Supports activities, outings, events and unfunded needs of Ascentia clients. *Gift of contributors in memory of Peter Hoke**.*

Donald and Diane Kravitz Emergency Financial Assistance Fund

Provides emergency financial assistance for JFSA clients. *Gift of Brian Kravitz.*

Kravitz Family Fund

Supports JFSA clients owning pets with expenses associated with caring for a pet(s) at home. *Gift of Brian Kravitz.*

Carol and Marv Lader Journeys Program

Supports "Journeys" program services. *Gift of Marvin and Carol Lader in conjunction with their gift to the Centennial Initiative for Jewish Cleveland.*

Seth Loeb Lettofsky Memorial Fund for Social and Recreational Programming

Supports social outings and recreational activities for adults with mental illness. *Gift of Rabbi Alan and Jean Lettofsky.*

Anne and Alex Miller Fund

Supports services to the elderly. *Gift of Anne** and Alex** Miller.*

Dianne and Herb Newman Fund for the Future of JFS Akron

Supports the continued presence of JFS in the Akron community. *Gift of Dianne and Herb Newman.*

Enid B. and David M. Rosenberg, MD Healthcare Engagement Fund

Supports the cost of malpractice insurance for retired healthcare professionals who volunteer their services at JFSA. *Gift of the Enid B. and David Rosenberg Family Foundation of the Jewish Federation of Cleveland.*

Grant S. Roth Memorial Fund

Supports JFSA clients underfunded and/or unfunded health care needs. *Gift of Robert and Margo Roth.*

Katherine A. and Noah D. Rusnak Fund for Individual and Family Needs

Supports funding to improve the health and functioning of individuals and families. *Gift of Susan Bichsel and Stephen Rusnak.*

Spira Ascentia Fund

Funds innovative initiatives that further the mission of Ascentia. *Gift of James and Myrna Spira.*

Eleanor Steigman Fund for Older Adult Services

Supports programming for older adults. *Gift of contributors in honor of Life Director Eleanor Steigman's lifetime of community service.*

Anne Wortzman Fund for Work, Social and Recreation Skill Building for persons with Mental Disabilities

Supports Ascentia programming for individuals with intellectual disabilities and mental illness. *Gift of William Wortzman.*

Lois Zaas Fund for the Maturing Community

Supports programming for the older adult community. *Gift of Donald Zaas.*

Irene and Sidney Zehman Library Fund

Supports the purchase of books and reference materials. *Gift of Roslyn Wolf** and Judy Sherman** in memory of their parents, Irene and Sidney Zehman.*

**Operated under the auspices of the Jewish Federation of Cleveland.
**Of blessed memory.*



the centennial initiative
FOR JEWISH CLEVELAND

Many thanks to the following Jewish Federation of Cleveland Centennial Initiative Funds which support JFSA's Ascentia Endowment:

- Becker/M&M Realty JFSA Ascentia Endowment Fund
- Aron and Dorothy Drost Centennial Initiative Ascentia Endowment Fund
- Alvin Gray Centennial Initiative Ascentia Endowment Fund
- Richard Horvitz Centennial Initiative JFSA Ascentia Endowment Fund
- Isenstadt JFSA Ascentia Endowment Fund
- Immerman Jewish Community Housing Centennial Initiative Endowment Fund
- Marvin Lader JFSA Centennial Initiative Ascentia Endowment Fund
- Louis and Sylvia Rosenblum Memorial JFSA Ascentia Endowment Fund



Older Adult Services staff help promote the World Jewish Congress #WeRemember Campaign which aims to combat antisemitism and all forms of hatred, genocide and xenophobia.

Our community response to the pandemic has been heroic.

We thank all the individuals, families and organizations that volunteered their time and donated household items, food, greeting cards, face masks and many other items to keep our clients safe.



At the onset of the pandemic, Jacob and Natalie Cohen of Pepper Pike, collected non-perishable items and donated them to JFSA's Client Food Pantry.

Volunteers

Individuals

Aaron Ackerman
Yeong-ran Ahn
Cynthia Aizen
Lynn Algeri
Aaron Baker
Sarah Barker
Jill Bernon
Nancy Bernstein
Pam Bertaud
Spring Biggs
Judy Blum
Claire Bober
Justin Bober
Christine Boja
Jamie Braden
Marianne Bregar
Richard Brown
Susan Burkhart
Amy Byrne
Carol Campese
Kristen Carey
Anneke Carlo
Sandra Carrel
Linda Chapman
Bruce Chelnick
Connie Cheng
Ellen Chernikoff
Chris Chuong
Shannon Coates
Gail Cohen
Janice Cohen
Bonnie Cole
Tarun Daniel
Reshae Davenport
Linda Demsey
Kelly Deutsch
Adam Diamond
Richard Diamond
Nicholas Donald
Ailis Dooner
Billie Erickson
Baylee Evans
Rachelle Fair
Charles Falkiewicz
Jana Fisher
Sabrina Fesel
Blanche Forman
Sarah Foster
William Franceschi
Harriet Friedman

Miriam Friedman
Annette Friedson
Tom Fuerst
Kefyalew Gobena
Erika Gold
Raedan Goldblum
Stacey Ann Grossman
Abbey Guggenheim
Michael Guggenheim
Armando Gutierrez
Megan Ha
Nia Hatchett
Michelle Hirsch
Sharon Hirsh
Codi Holstein
Leslie Holz
Alexander Hurtado
Louis Innenberg
Judy Isaacs
Lois Jacobson
Riley Jiang
Jane Jasper
Alison Jin
Sade Johnson
Devon Jones
Heidi Jones
Suellen Kadis
Ellen Kendall
Fern Kendis
Zevi Kershner
Marjory Klein
Michele Klein
Mike Klein
Dolores Kleinman
Margaret Kochevar
Lisa Kornspan
Roger Kramer
Cheryl Kretch
Carla Kun
Melanie Kutnick
Kristin Levintag
Nancy Lipko
Beverly Lloyd
Madeleine Lochan
Emily Ludwig
Mike McGraw
Daniel Makoroff
Amiel Mercado
Robert Merchant
Jordan Meyer
Jody Mirman

In-Kind Donors

Patti Morgenstern-Clarren
Jill Morris-Boardman
Ellen Moss
Amy Murphy
Madeline Nacci
Carol Narotsky
Nicole Neiman
John Nguyen
Cindy Oakley
Alex Ockerse
Yesol Oh
Rachel Osherow
Nicole Park
David Partington
Hinali Patel
Wendi Pavlofsky
Sharon Peerless
Bridget Petitti
Elizabeth Pham
Deborah Picker
Nina Pukys
J.J. Reaven
Susan Reisman
Mariana Riley
Jazmine Robinson
Robert Rosen
Jenny Rosenberg
Raquel Rosenberg
Rachel Rosinski
Merle Ross
Benjamin Roter
Kristin Roudebush
Patty Rubin
Nicole Russo
Mark Sack
Sharon Samuels
Elissa Schabes
Giancarlo Schillaci
Linda Schlein
Minna Schwartz
Louis Sepulveda
Dana Severin
Maude Shafron
Jennifer Shearer
Cheryl Siegel
John Siff
Yumi Simmons
Vivian Singer
Aletta Sinoff
Jessica Lynn Smith
Norma Smith

Maureen Sokolov
Bradley Solomon
Howard Sperber
Trudy Stearns
Michelle Stern
Susan Stern
Todd Stern
Lewis Sternberg
Louise Sternberg
Aubrey Stickland
Dana Stratz
Margie Strimbu
Donna Sulzer
Jeanne Sydenstricker
Hannah Szabo
Tibor Szabo
Kristie Szymanski
Nardine Taleb
Michael Tam
Caleb Thibeault
Leonard Tracht
Ellen Tran
Ian Tsun
Jason Tucker
Mason Uemura
Mario Vassar III
Samantha Vogel
Alexsa Wanchick
Adrienne Wasserman
Earl Weiss
Marilyn Weiss
Stephanie Wieder
Ronald Wiesenthal
Chelsea Williams
Donald Zaas
Marilyn Zaas
Christopher Zhou

Organizations

Caring Cubs
Congregation Shaarey Tikvah
Gross Schechter Middle School
Kids2Kids
Mandel JDS Student Council
NCJW Cleveland
Park Synagogue
Temple Israel Ner Tamid
The Temple-Tifereth Israel
Women's Association
Horvitz YouthAbility
Ambassadors

Individuals

Louise Abrams
Bart Alcorn
Luisa Aviv
Gayane Bates
Marilyn Bedol
Jules and Fran Belkin
Nancy Bernstein
The Bichsel-Rusnak Family
Robert and Eileen Blattner
Sherri and Marc Blaushild
Dan and Judy Boring
Debra Jan Borstein
Julie Budd
Andrew and Lucy Chess
Jacob Cohen
Natalie Cohen
Philip Cohen and
Lynne Marcus Cohen
Josie Crisman
Patti Dery
Anne Feldman
Tabitha Fleet
Joseph Gilligan
Shelley and Adam Gimbel
Karen Gohring
Elana Goodman
Elaine and Neil Grossman
Richard and Wendy Halle
Janice Hirshon
Leonard** and Joan Horvitz
Kim Ivory
Sherry and Daniel Kendis
Michael Klein
Judith Kossoff
Marlene Krause
Bonnie Krauss
Anna Litvinskiy
Linda Mackall
Tammi Minoski
Chelsea Paxton
Shari and Michael Perlmutter
Tamara Petrosova
The Putnam Family
Ilana Ratner
Irene Ravkin
Susan and Barry Reis
Stephanie Reznick
Nellya Roytberg
Amy Rzepka
Debbie Saferstein

Helen Samuels
Stephanie Schafner
Kallie Schafner
Sarah Scholsser
Beth Segal
Amanda Sillin
Tiffany Singer
Diane Skinner
Todd and Jennifer Stern
Margie Strimbu
Sidney Strulouits
Debbie Suchan
Toby Trevis
Melissa Van Duzer
Timothy and Suzann Van Duzer
Rosemarie Ventura
Laura and David Vexler
Amy Wagner
Anne Warren
Karen and Ira Weiss
Hyla Winston
Nancy Wolf and Aric Greenfield
Richard and Debbie Zelin

Organizations

Anshe Chesed Fairmount Temple
B'nai Jeshurun Congregation
Centers for Hearing Care
Cleveland Joseph Project
Community Quilters
Cuyahoga County Emergency
Operations Center
Green Road Synagogue
Malco Products
Mandel Early Childhood Education
The Mask Lady
MedWish International
Medworks
Miracle Medical
Transportation, Inc
NCJW Cleveland
The Park Synagogue
Premier Produce One
Suburban Temple-Kol Ami
Temple Emanu El
Temple Israel Ner Tamid
Trader Joe's
Wortzman & Gingerich Company
YellowCake Shop

***Of blessed memory.*

Responding to the Need for Face Masks



Community volunteers pulled out their sewing machines and made face masks for JFSA staff and clients. TOP: Meggie Bond of Shaker Heights was one of the first volunteers to sew handmade face masks for JFSA. MIDDLE: Margie Strimbu of Avon Lake; BOTTOM: Horvitz YouthAbility Ambassador Megan of Chagrin Falls.

JFSA College Financial Aid Program

JFSA Family Scholarships

Funding for the following 2019-2020 academic year scholarships were made by individual donors. Gifts to these scholarships are recognized in the donor listings beginning on page 29.

- Alumni and Friends of JFSA College Financial Aid Program Scholarship
- Bruml Family Scholarship
- Cleveland Friends of Yeshivat Netiv Aryeh
- Faber-Rosen Scholarship
- Gutarts Family Scholarship
- Richard Horvitz and Erica Hartman-Horvitz
- The Horvitz YouthAbility Program College Scholarship
- Ruth and Charles Jacob Scholarship
- Raskind Family Scholarship
- Barney and Sarah Richman Memorial Scholarship
- Rosskamm Family Scholarship
- Amy Saltzman Scholarship
- Mark Saltzman Scholarship for Business
- Shelly Saltzman Scholarship for Education
- William Wortzman Family Education Fund

Jewish Federation of Cleveland Scholarships

Funding for the following 2019-2020 academic year scholarships were made possible through funds from the Jewish Federation of Cleveland.

- The Morris Abrams Award in International Relations
- The Ruth Weltmann Begun Memorial STEM Scholarship
- The Jack W. and Shirley J. Berger Memorial Scholarship
- The Jack W. and Shirley J. Berger Scholars Award
- The Sophie and Henry Billys Scholarship
- The Dr. Grace F. Brody Scholarship
- The Myrna and Edwin Froman Memorial Endowment Fund
- The Frank Joseph and Elaine Sara Garron Memorial Scholarship
- The Eleanor R. Gerson Award for Graduate Students in Social Work
- The Eleanor Gerson Education Fund
- The Ellie Gerson Scholarship for New Americans
- The Solomon and Jennie Hurvitz Scholarship
- The Jaffe Family Community Service Scholarship
- The Mrs. Bert Keller Fund
- The Meisel Family Scholarship
- The Irving I. Stone Support Fund
- The Howard S. Young Scholarship
- The Helen and Morris Zupnick Scholarship

Donors and Funders

The following list represents gifts and grants to JFSA, Hebrew Shelter Home, PLAN of Northeast Ohio, JFSA College Financial Aid Program, and Jewish Family Service of Akron between July 1, 2019 and June 30, 2020. Capital Campaign contributions are listed separately on page 23.

\$500,000 plus

Administration for Community Living ■
Alcohol, Drug, Addiction and Mental Health Services Board of Cuyahoga County ■
Conference on Jewish Material Claims Against Germany, Inc. ■
Irving B. Fine Trust ■
Jewish Federation of Cleveland ■

\$100,000 - \$499,999

The Semi J. and Ruth W. Begun Foundation ■●
Kavod Shef ■

\$50,000 - \$99,999

Gerald and Michele Goldberg ◆
Jewish Community Housing, Inc. ■◆
Marvin and Carol Lader ■
The Milton and Tamar Maltz Family Foundation ◆▼
Dianne and Herb Newman ■▲
Ohio Attorney General ■
The William J. and Dorothy K. O'Neill Foundation ■▼
Simon Family Foundation ■●
The Treu-Mart Fund ■●◆

\$20,000 - \$49,999

Louis, Celia and Joseph L. Abrams Memorial Fund ■●
Cuyahoga County Public Safety and Justice Services ■
Leonard** and Joan Horvitz ■
Robert and Susan Immerman ■
The Mandel Foundation ■●
Meisel Family Foundation ■●
Office of Criminal Justice Services ■
Sheila Reingold and Marc Benson ■

William Wortzman ■◆▼◆
The Wuliger Foundation/Sandra and Tim Wuliger* ■
Dan and Ellen Zelman Family Foundation/ Dan and Ellen Zelman ■●

\$10,000 - \$19,999

Anonymous ■◆
Jules and Fran Belkin* ■◆
Wendy Blattner and Tom Inck ■
Community Fund Management Foundation ■
The Corbin Foundation ▲
Myrna and Edwin Froman Endowment Fund ■●◆
The Horowitz Ratner Family Foundation/ Charles and Ilana Horowitz Ratner* ■●◆
Dolores Kleinman ■◆▼◆
Karen and Norton Newborn ■
Raskind Family Fund ■◆
Shelly and Mark Saltzman ◆
The E.A. and Mollie C. Schwarzenberg Memorial Fund* ■
The Bennett & Donna Yanowitz Family Foundation ■●

\$5,000 - \$9,999

Anonymous ■
Akron Community Foundation ▲
The Blue Card ■
Bruck Family Foundation, Inc. ■◆
Homer and Gertrude Chisholm ▼
Philip Cohen and Lynne Marcus Cohen* ■
Cuyahoga Arts & Culture ■
The Harry K. & Emma R. Fox Charitable Foundation ■
The Peggy and John Garson Family Foundation ■●
Richard and Wendy Halle ■▼

G. Kent and Jerry Hayes ■▼
The Richard Horvitz and Erica Hartman-Horvitz Foundation/Richard Horvitz and Erica Hartman-Horvitz ■
Stuart and Theresia Kline* ■◆
The Lehner Family Foundation ▲
Martin and Lois Marcus* ■◆
Peter and Susan Meisel ■
Patricia and Charles Mintz* ■
Robert and Margo Roth* ■
Jackie and Fred Rothstein ■
The Maurice Saltzman Youth Panel ■
Scholnick Family Foundation ■●
Norma and Ernie Siegler Family Foundation ■●◆
Robert and Eileen Sill Family Foundation ●◆
Will and Jan Sukenik Family Foundation ◆
Michael and Danielle Weiner ■
Idelle Wolf* ■◆

\$2,500 - \$4,999

Edward I. Abramson JCBA Program Fund ▲
Robert and Eileen Blattner ■◆▼
Sherri and Marc Blaushild ■
Cynthia and Robert Bruml ■◆◆
Carol and Scott Burg ■◆▼
Kenneth L. Calhoun Charitable Trust ▲
Cleveland Joseph Project ■
Nan Cohen and Daniel Abrams* ■
Grant and Jennifer Dinner ◆
The Giant Eagle Foundation ■
Amy and Harlan Goldman* ■
Marshall and Sandra Goldman* ■
C. Mark Hayes ▼
Christopher Huhnke ■
Donald and Judy Jacobson ■◆
Lawrence and Suellen Kadis* ■
Melvin and Lola Kamins ■◆

*Recommended by these individuals from their donor advised funds of the Jewish Federation of Cleveland. **Of blessed memory. ***Matching gift.

■ JFSA Cleveland Gift ● Jewish Federation of Cleveland Supporting Foundation

◆ Hebrew Shelter Home Gift ▼ PLAN Gift ▲ JFS Akron Gift ◆ College Financial Aid Program Gift

We make every effort to ensure the accuracy of these lists. Please contact the Development Department with any corrections at 216.504.6451.

Harvey and Norma Kotler ■◆▼▲
 Shari and Michael Perlmutter* ■◆
 The Harry Ratner Human Services Fund* ■
 Ronald and Deborah Ratner* ■
 Charles E. & Mabel M. Ritchie Memorial
 Foundation ▲
 David and Enid Rosenberg ■◆
 Betty Rosskamm ■❖
 Sam and Terry Roth ■
 Donald and Toni Scherzer* ■❖
 Anita Seid** ■
 Michael and Anita Siegal Family Foundation
 /Michael and Anita Siegal ●◆
 Terri and Howard Steindler* ■◆▼
 Eric Synenberg and Jamie Gottlieb
 Synenberg ■
 United Way of Greater Cleveland ■
 Moira and Wulf Utian ■
 Welty Family Foundation ▲
 Stanley E. and Sally Harris Wertheim
 Family Foundation ■●
 Mary Saionz Wolf and Charles Wolf
 Memorial Endowment Fund* ■
 Donald Zaas ■

\$1,000 - \$2,499

Anonymous (2) ■
 Louise Abrams and Robert Fuerst ■
 David and Hedy Adler ◆
 Trish and Mark Adler ■◆
 Apple Growth Partners, LLC ❖
 Marilyn Bedol* ■◆▼
 Samuel Bayer ■
 Robert Bellamy ■
 Susan Bichsel and Steve Rusnak ■◆▼▲❖
 Kathy Bigham ■
 B'nai Jeshurun Sisterhood ■
 Glenn R. & Alice V. Boggess Memorial
 Foundation ▲
 Carl S. Lieberman JFS Fund ▲
 Rebecca and Irad Carmi ■
 The Castele Family Foundation ■
 Ethan and Gena Cohen ■◆
 Ellen E. & Victor J. Cohn Supporting
 Foundation ■●

Bonnie and Michael Cole ■◆
 Michael and Nicol Coxon ▼
 Paula and Daniel Dreyfuss ■
 Estate of Gwendolyn J. Pulos ▲
 The P&W Evans Charitable Foundation ■
 Thomas Gerson* ■
 Boris and Raisa Gliner ■
 Allan and Elise Goldner ■◆
 Sally Good* ■◆
 Sidney Good* ■
 Bruce and Lynn Goodman ■
 Steven and Edith Greenberg* ■◆
 Michael and Abbey Guggenheim ■▼
 John and Lori Herman ■
 Michelle and Evan Hirsch* ■
 Stephen and Amy Hoffman ■
 Jewish Community Programs for
 Women & Children Fund* ■
 Jeffrey Kahn and Karen Horowitz* ■
 Faye Kaplan ■◆
 Irving and Wally Kaplan ■
 Daniel Katz ■
 Richard** and Roberta Katzman ■
 Michael Klein ■
 Andrew and Joan Kohn ■
 Sue Ellen and Jeffrey Korach ■
 Taub and Joan Kornblut ■◆
 Mitchell and Theresa Lapin ■
 Shereylynn Lehman ■
 Teri Levine Memorial Homelessness
 Assistance Fund* ■
 Margaret and Richard Margolis* ■
 Dan and Bonnie Marks ■
 Stanley** and Barbara** Meisel* ■
 Joseph Mendes & Mollie Mendes Family
 Charitable Fund ■
 Claudia Metz and Tom Woodworth ▼
 R.C. and Katherine M. Musson Charitable
 Foundation ▲
 Helen and David Nagusky* ■
 Wendi and Ervin Pavlofsky ■
 Allan and Nancy Pearl ■◆
 Kim and Paul Pesses* ■

Elisabeth Plax ■
 Progressive Insurance Foundation*** ■▼
 Reminger Co., L.P.A ■
 Susan and Mark Ringel ◆
 Fred and Lynn Rosenberg ■
 Larry and Georgia Rothstein ■
 Patty Rubin* ■
 Aaron Saltzman** ■
 David Schultz ■❖
 Senkfor Family Foundation ◆
 Eric Shapiro and Jane Buder Shapiro ■
 Ilene Shaw ■
 Michael and Paula Sieger ◆
 Eileen Sill ■
 Naomi G. and Edwin Z. Singer Family Fund ■●
 Lloyd L. & Louise K. Smith Foundation ▲
 Marvin and Judith Solganik* ■◆
 David and Penny Strauss ■
 Kevin Tucker ▲
 The Up Side of Downs of Northeast Ohio ■
 Jack and Blanche Valancy ■
 John and Cynthia Valenti ▼
 Penni and Stephen Weinberg ◆
 Gail and Ed Weintraub ■
 Cathy and Robert Weiss ■
 John and Linda Wirtshafter ■
 Jonathon Wise and Cheryl Davis ■▼
 Matthew and Joanna Wyner ■
 Dara and Alan Yanowitz* ■◆

\$500 - \$999

Ian and Gloria Abrams ■◆
 Jodi and Joel Adelman ■◆
 Tracy Backer ■
 Marilyn Bedol* ■◆▼
 Gary and Janice Bilchik ■
 B'nai Jeshurun Congregation ■
 Richard Brown ■
 Michele and David Camiener ▼
 Elizabeth and Keith Chelm ■
 Mary Dobyms ■▼
 Robert and Darlene Duvin ◆

*Recommended by these individuals from their donor advised funds of the Jewish Federation of Cleveland. **Of blessed memory. ***Matching gift.

■ JFS Cleveland Gift ● Jewish Federation of Cleveland Supporting Foundation

◆ Hebrew Shelter Home Gift ▼ PLAN Gift ▲ JFS Akron Gift ❖ College Financial Aid Program Gift

We make every effort to ensure the accuracy of these lists. Please contact the Development Department with any corrections at 216.504.6451.

- John and Kathy Eyerman ■
 Bennett and Sharon Fagin ■
 Midori and Claudio Fiocchi ■
 Brian Gingerich and Dulcey Barr ■
 Jeffrey and Jodi Gottlieb* ■
 Michael and Nancy Greff ■◆
 Rostislav Gutarts and Inga Becker-Gutarts ■◆
 Sharon Guten ■
 Robert Guzik ■
 Michael and Raquel Haas ■◆
 Andrew Harrison ■◆
 Horvitz YouthAbility ■◆
 Paula and Daniel Herman ■◆
 Impullitti Landscaping Inc. ■
 Fern and Loren Kendis ■
 Bruce Kendrick ▼
 Ann and David Knight ■
 Rik and Nancy Kohn* ■
 Carla Kun ■
 Michael Leikin ■
 Leikin Motor Co. ■
 Martin and Joyce Levin ▲
 Beth and Ronald Levine ■◆
 Maureen and Steven MacIntyre ■
 Howard and Sue Maier ▼
 Herbert and Cookie Marcus* ■
 Elizabeth Mease ■
 Jill and Josh Miller ■
 W. Paul Mills & Thora J. Mills Memorial Foundation ▲
 Laura R. & Lucian Q. Moffitt Foundation ▲
 Suzann Moskowitz ■
 The Park Synagogue ■◆
 Deborah and Scott Picker ■
 Lawrence and Phylis Pomerantz ■
 Clara Rankin ■▼
 The Albert B. & Audrey G. Ratner Family Foundation ◆
 James Ratner ■
 Kevin and Sharon Robertson ■
- Dana Rose ■
 Jacob Rudin-Luria ■
 Florine Rusnak ■
 Sharon Shapiro ▲
 Bernice Sharpe ■
 Lawrence and Margaret Singerman ■
 Maureen and Barry Sokolov ■
 Jeffrey and Mary Sopko ▼
 David Sperling ■
 Trudy Stearns ■
 Dana Stratz ■
 The Temple - Tifereth Israel ■
 Phillip and Debbie Weiss ■
 Sally and Stanley Wertheim ■
 Gordon and Linda Wetzel ▼
 Ernestine Wiesenfeld ◆
 Melanie Young ▼
 Zilber Family Foundation ●◆
- \$250 - \$499**
 Anonymous (5)* ■
 Hinda and Howard Abramoff ■
 Adam Levin & Associates, Inc. ■
 Adelman & Gettleman, Ltd. ■
 Brendan Anderson ■
 Sherri Appleton and Marty Resnik ■◆
 Linda Becker ■
 Lynne and Irv Berliner ■
 Martin and Carole Blake ■
 Jean and Louis Bloomfield* ■
 Robert and Beth Brandon ■
 Barrett and Joyce Brown ■
 John Burkhart ▼
 Peter and Rita Carfagna ▼
 Hillel Chiel and Elizabeth Dreben ■◆
 CNS Investors/Wolf Investors, LLC ■
 Gilda Cohen ■▼
 Deborah and Kenneth Cohen ■
 Marti and Jeffrey Davis ■

Responding to the Need for Drivers



Many of JFSA's volunteer meals drivers were unable to make deliveries due to being at high risk to the COVID-19 virus. Several new volunteers stepped up to take their place to keep the program running. TOP: Rick Diamond of Orange; MIDDLE: Richard Brown of Moreland Hills; BOTTOM: Cheryl Siegal and Marilyn Weiss, both of Beachwood.

*Recommended by these individuals from their donor advised funds of the Jewish Federation of Cleveland. **Of blessed memory. ***Matching gift.
 ■ JFSA Cleveland Gift ● Jewish Federation of Cleveland Supporting Foundation
 ◆ Hebrew Shelter Home Gift ▼ PLAN Gift ▲ JFS Akron Gift ◆ College Financial Aid Program Gift
 We make every effort to ensure the accuracy of these lists. Please contact the Development Department with any corrections at 216.504.6451.

Responding to the Need for Connection



Horvitz YouthAbility Ambassadors created birthday greeting posters for its members and delivered them personally (social distancing observed!) to keep spirits high.

- Elizabeth Dery and Steven Schecter ■
 - Joanne Dobies ■◆
 - Leslie and John Dunn* ■
 - Henry Eisenberg and Ellen Gans Eisenberg ■
 - Deborah and Alan Erenrich ◆
 - Lawrence and Bonnie Frankel ◆
 - Elisha and Anna Fredman ◆
 - Jane Friedman ◆
 - David and Brenda Goldberg ■
 - Michael and Beverly Goldie ◆
 - Penny and Robert Greenberger ◆
 - Jean Heflich ■
 - J. David and Rebecca Heller ■
 - Sandra and Richard Herman ■
 - John and Elaine Hibshman ■
 - Leslie and Mark Holz ■◆
 - Michael and Jane Horvitz* ■
 - Elise Hurwitz ■
 - Judy Immerman Payne ■
 - Patricia Inglis ■
 - Stephen Kadish* ■
 - Gary Kaplan and Roberta Karsh Kaplan ◆
 - Frieda Kochman ■
 - Isay Krainsky ■
 - Harvey Krieger ■
 - Barbara and Ronald Lang ■
 - Luxenberg Properties, LLC ■
 - Eva Mandula ■
 - Shelley Milin Marcus and Gregory Marcus* ■◆
 - McCarthy, Lebit, Crystal & Liffman Co., L.P.A. ■
 - David Miller ■
 - Renate and Marvin Miller ■
 - Mary Ann Minster ▲
 - Esther Moss* ■
 - NCJW-Cleveland ■
 - Stephanie and Nicholas Nebehay-Ulmer ▼
 - Rabbi Robert Nosanchuk and Joanie Berger ■
 - David Partington and Barbara Zaas Partington ■
 - PayPal Giving Fund ■
 - Richard Pearson ■
 - Joel and Sharon Peerless ▼
 - Michael and Barbara Peterman ■
 - Jody and Tod Podl ■
 - Junior Ratner Club ■◆
 - Gary Resnik ■
 - Mariana Riley ■
 - Jamie and Jeffrey Rindsberg ■
 - Cary and Barbara Root ■
 - Charles and Maxine** Rosenbaum ■▼
 - Alex Rozenberg ■◆
 - Susan and Steven Rubin ■◆
 - Erika Rudin-Luria and Rabbi Hal Rudin-Luria ■◆
 - Karen Schneiderman ■
 - Harvey and Diane Scholnick ■
 - Michael Shapiro ■
 - Andrew Stein ■
 - Rebecca Storey ▼
 - Margie and Vic Strimbu ■
 - Bernida Thompson ▼
 - Janet Verni ■
 - Eric and Joyce Wald ■
 - Louise and Greg Warner ■
 - Chuck and Randi Wien ■
 - Milton and Edith Wiskind Designated Fund ▲
 - Donna Yanowitz ◆
- \$100 - \$249**
- Anonymous (6) ■◆▼
 - Abby and Tom Abelson ■
 - Michael and Robin Abrams ■
 - Joann and Tom Adler ■
 - Altitude Optics ■
 - Michael and Brenda Altose ◆
 - Amazon Smile Foundation ■
 - Ellen Ardman ■
 - Robin Avery and Michael Lauer ■◆

Recommended by these individuals from their donor advised funds of the Jewish Federation of Cleveland. **Of blessed memory. *Matching gift.*
 ■ JFSA Cleveland Gift • Jewish Federation of Cleveland Supporting Foundation
 ◆ Hebrew Shelter Home Gift ▼ PLAN Gift ▲ JFS Akron Gift ◆ College Financial Aid Program Gift
 We make every effort to ensure the accuracy of these lists. Please contact the Development Department with any corrections at 216.504.6451.

Luisa Aviv ◆
 Charles and Sandra Babbush ■
 Mitchell Balk ■
 Oren and Sue Baratz ■
 Susan and Dale Bass ■
 Martin Belsky ▲
 Nadine Bendycki ▼
 Nathan and Sosamma Berger ■
 Richard and Sharon Berger ■
 Susan Berger and Robert Brown ■
 Martin and Doris Berkowitz ◆
 Jean Berweiler ■
 Ron and Betsy Bildstein ■
 Pamela Blake ◆
 Steven and Adele Blazey ▲
 Barnett and Carole Bookatz ■
 Judith Borodkin Blum ■
 Thomas Bralliar ■
 Ben Brauer ■◆
 Bill and Carol Bruml* ■
 Adam Buss ■
 Beverly Byrd-Lloyd ■
 Linda and Howard Chapman ■
 Florence Chelm ■◆
 Renee and Kerry Chelm ■
 Carol Sue and Percy Clark ■
 Elaine and Martin Cohen ▲
 Marc Collin and Rita Cydulka ■
 Patricia and Stephen Crane ▲
 Jean and John Cregan ▼
 Daughters of Israel ▲
 Martin and Mindy Davidson ■
 William and Judith Day ■
 Josephine and Pieter deHaseth ■▼
 Anthony DeMauro ■
 Gary and Andrea Desberg* ■
 Wendy and Daniel Dobres* ■
 Fran and Mark Doris* ■
 Joan Drnek ◆
 Carl and Emily Einstein ◆
 Bruce and Sharon Epstein ◆
 Alfred and Harriet Fader ◆
 Avroy and Roslyn Fanaroff ■
 Susan and Gene Farber ■
 Cindy Feuer ■◆
 Harvey Finkel ▲
 Ronald and LuAnne Fisher ■
 Rina Frankel ■
 Joyce Franklin and Stephan Roth ■
 Rochelle Friedberg ■
 Harriet Friedman ◆
 Avrum and Phyllis Froimson ◆
 Derek and Amy Gale ■
 Shana Gandal ■
 Carolyn Garfinkle ▲
 Anne and Stanley Glad ■
 Meryl and Jeffrey Goldberg ■
 Shari and Michael Goldberg ■
 George and Eileen Goldman ■▲
 James Goldsmith and
 Nancy Shaw Goldsmith ▼
 Lois Goodman ■
 Tom Goodman ■
 David Gordon ■
 Alvin Gray** ◆
 Leona Green ■◆
 Laura and Ted Greenberg ■
 Melissa Grody ■
 Gregory Groshan ■
 Elaine Gross ■
 William and Stacey Ann Grossman ■
 Charlotte Guggenheim ■
 Guggenheim Inc. ■
 Bahman and Lora Guyuron ■
 Adam and Amalia Haas ◆
 Janet and Dennis Haines ■
 Stacie and Jeffrey Halpern ■◆
 Amy Handel ■
 Lee Hart ■
 Alan and Diane Herzog ■
 Esther and Larry Hexter ■▲
 Robert Hexter* ■
 Richard Hirsh ▲
 Jodi Hoffer and Dr. Alan Hoffer ■
 Miriam Hoffman ■
 Florence and Joseph Hrusch ■▼
 Donald and Lynda Insul ■
 Jeanne Irvin ■
 Sally Isenstadt ■
 Israeli American Council ■
 Michael Jacobs ■
 Edna and Amir Jaffa ■
 Karen and Marc Jaffe ◆
 James Marketing ■
 Jane and George Jasper ■
 Jewish Family Service of Metro Detroit ■
 William Jones ◆
 Arline Joseph ■
 Jane Joseph ◆
 Ira and Amy Kaplan ■
 Jeffrey Kaplan ■
 Zac Katz ■
 Larry Kaufman ■
 Michael Kaufman ▲
 Linda Kelly ■
 Jonathon and Bonnie Klarfeld ■
 Elizabeth Klein ■
 Jonathan and Abbie Klein ◆
 Kohrman, Jackson & Krantz* ■
 Melissa and Lee Korland ■
 Robert Kraftowitz and
 Janice Kraftowitz-Gordon ■
 Krantz Dental Care ■
 Anne Kuenzel ■
 Ronnie Kugel ■
 Steve Kutnick and Jackie Darrow ▲
 Shelah Kutunow ■
 Robert and Elayne Kwait ◆
 Annette Lancry ■
 Joanna Laytin ■
 Helen and David Lazar ■
 David Leavitt and Leah Spector ◆
 Kathy and Robert Leb ■
 Ron Lederman ▲
 Elyn and Barry Lefko ■◆
 Jordan and Jane Lefko ◆

*Recommended by these individuals from their donor advised funds of the Jewish Federation of Cleveland. **Of blessed memory. ***Matching gift.

■ JFS Cleveland Gift ● Jewish Federation of Cleveland Supporting Foundation

◆ Hebrew Shelter Home Gift ▼ PLAN Gift ▲ JFS Akron Gift ◆ College Financial Aid Program Gift

We make every effort to ensure the accuracy of these lists. Please contact the Development Department with any corrections at 216.504.6451.

Howard and Susan Levin ■
Keith and Nancy Libman ■
Charles Lissauer ■
Heather Long ■▼
Stephanie Lowery ■
The Madav IX Donor Advised Fund*◆
Betsy Mahlke and Stephen Brown◆
Rosemary and Jim Malfetti ■
Lois and Martin Marcus ■
Sheila and Kevin Margolis ■
Jane McAfee ■
Deborah McCreath ■
Peter McDermott ■
Martha and Patrick McGraw ■
Daniel and Wendy Messeloff ■
Andrew and Minda Meyer ■
Darby and Jonathan Miller Steiger◆
Robert and Andrea Minster▲
Thomas and Marianne Monahan ■
Beryl and Irwin Moore ■
Lois Morris ■
Jan Moskowitz ■◆
Nachama Moskowitz◆
Jeffrey Moss ▼
Dorothy and William Mulh ■
Amy and Larrie Nadler ■
Marcus Neiman ■
Marshall Nurenberg ■
Simon Oakley ■
Kenneth Oif and Marilyn Frankel Oif ■◆
Susan and James O'Neil ■
Terrence and Katherine Ozan ■
Debby and Zach Paris ■
Neil** and Isabel Parks◆
Michael and Leslie Podolsky ■
Keith and Cynthia Polster*■
Pressco Technology Inc. ■
Joanne and Richard Prober ■◆
Julia Radwany▲
Nancy and Ronald Rafal ■
Christine and David Raven◆
John J. Ready & Associates ■
Edwin and Faye Regal▲
Abe Reiter ▼
Paula Reshotko ■
Nadine and John Resor◆
Kay Reynolds-Boyce ■
Marlene Ricanati ■
Charles and Sally Rich ■
David Richter◆
Howard Rieger and Beverly Siegel ■
Barbara Robinson*■
Beverly Rose▲
Charles and Gayle Rosenberg ■
Frank and Beth Rosenberg◆
Nanette and Ed Ross ■
Ronald Rossi ■
Deborah Roth ■
Max and Beverly Rothal▲
Michele Rothstein ■
Mark Sack ■
Bobby and Michael Sacks▲
John and Patty Saks▲
John and Erin Samenuk ■
Leslie and James Samenuk ■
Carol Santalucia ■
Jerome Savransky ■
Elaine Schkolnick ■
David and Deborah Schlosberg ■
Carmela Schneider ■
Jennifer Schwarz ■
Rachel and Joel** Schwarz ■
Daniel Schweid and Carolee Lesyk ■
Jay and Sharon Seaton ■
Michael and Kathy Seider▲
Robin Sue Seiger*■
Mary Ann and Gary Shamis ■
Melanie Shandalov ■
Janet and Lee Shapiro ■
Marvin Shapiro▲
Robert and Cheryl Sheinin▲
Sandra and James Shirey ■
Laura Siegal**◆
Jane and Robert Silverman ▼
Sheril and Daniel Sinykin ■
Rabbi Joshua Skoff and Ilana Hoffer Skoff ■
Martha Somach ■
Barbara and Steve Somogyi◆
Doris Sopher◆
Richard and Barbara Speer ■
Karen and Keith Spero ■
Susie Spiwak and George Merijohn ■
Erica Starrfield ■
Jon Steiger ■◆
Eleanor Steigman*■
Susan and Brian Stern ■
James and Edith Stevenson ■
Dan and Maria Strom ■
Harvey and Barbara Temkin ■
Sanford and Beth Timen ■◆
Jeanne and Jordan Tobin ■
Gloria and Stuart Treiber▲
Barbara Tuber◆
Ronna Uhrman ■
United Way Metropolitan Chicago ■
Carmen and Andrei Vermont ■
Gregory and Sharon Vranekovic ▼
Jay Wachs ■
Jeffrey and Hallie Wasserman ■
Jennifer Wasserman ■
Arthur and Jennifer Weisman ■
Eleanor Weisman ■
Randy Wells ■
Marcia Wexberg and Kenneth Singer ■
Andrea White ■
Farris and Kathleen White ▼
Charles and Joan** Whitehill◆
Ruth and Kenneth Wieder ■
Jeffrey and Danielle Wild ■
Joshua Wilkenfeld ■
James and Eileen Wilkoff ■
David and Carol Willen◆
Judy and Steven Willensky*■
Francis Wilson ■
Nancy Wind ■
Mark Wittow ■

*Recommended by these individuals from their donor advised funds of the Jewish Federation of Cleveland. **Of blessed memory. ***Matching gift.

■ JFSA Cleveland Gift ● Jewish Federation of Cleveland Supporting Foundation

◆ Hebrew Shelter Home Gift ▼ PLAN Gift ▲ JFS Akron Gift ◆ College Financial Aid Program Gift

We make every effort to ensure the accuracy of these lists. Please contact the Development Department with any corrections at 216.504.6451.

Carol and Michael Wolf ■
 Nancy Wolf and Aric Greenfield ■
 Warren and Anne Marie Wolfson* ■
 Carol Wortzman ■
 Edward Wortzman ■
 Allison and Jason Wuliger ■
 Pauline Yee ■
 Darrell and Andria Young ■
 Richard and Debbie Zelin ■
 Sidney and Shirley Zetzer ▲
 Lisa and Rob Zimmerman ■
 Jill Zimon ■

\$50 - \$99

Anonymous (6) ◆◆
 Amie Albert ■
 Myrna Arlen ■
 Carolyn and James Bankhurst ■
 Harvey and Paula Bass ■
 Rhea Bateman ▲
 Harry and Penny Beer ■
 Rob Berick ■
 Frances Berman ■
 Maxine Birrer ■
 E.J. Bloom ■
 Elaine Bolasny ■
 Lawrence Bole and Anita Vento ▼
 John Borstein ▲
 Errol and Ellen Brick ■
 Christina Brown ■
 Stanley and Barbara Brown ■
 Sandra Buzney ■
 Cheryl Byers ■
 Rebecca Chesler ◆
 Michael and Sandy Covitch ■◆
 Martin Davis ■
 Iona and Richard Dettelbach ■
 Robbi and Howard Dunn ■
 Eaton Charitable Fund*** ■▼
 Barry and Barbara Epstein ■
 Robert and Marcia Fein ■
 Phyllis Fine ■

Eric and Amy Fingerhut ◆
 Shelley and David Fishbach ■
 Dennis and Marcy Fisher ◆
 Jonathan Forman ■
 David and Judith Friedman ▲
 Madeline Friedman and Norman Levin ■
 Carolyn and Ed Gabelman ■
 Ginny and Gadi Galili ■
 Bernice and Donald Gandal ■
 Ann and Scott Garson ■
 Marci and Brent Garson ■
 Toby Geduld ■
 Nora and Seth Glauberman ▲
 Howard and Suri Goldman ◆
 Gail and Sheldon Goodman ■
 Anne Gordon ■
 Blaine Gottehrer ■
 Aaron Graham ■
 Heather and Alan Greenberg ◆
 David and Lynn Heiman ■
 Hitachi Healthcare Americas ■
 Jayme and Howie Honigman ■
 Loris Horwitz ▲
 Frances Hurwitz ■
 Robert and Susan Hurwitz ■
 Victoria and Paul Isenstadt ■
 Sheldon and Judith Kaffen ■
 Gloria and David Kahan ■
 Jane Kaufman ■
 Leslie Kaufman ■
 Carmen Kestranek ■
 David Klausner and Karen Fields ■
 Ernest and Marcia Kline ■
 Theodore Kodish ▲
 Mindy Kosmin ■
 Donna Kramer ◆
 Richard Kurz ■
 Gilberte Leibovith** ■
 Ariella Rose Levine Foundation ■
 Jaime Lowy ■
 Howard and Arlene Madorsky ■

Responding to the Needs of Survivors



Thanks to the Hearing Mission Foundation and financial support from Kavod Shef, Holocaust survivors received the gift of hearing with custom hearing aids. TOP: Abram Horn and Dr. Danielle Hoenig MIDDLE: Rita Pollack BOTTOM: Tamara Levina and Dr. Sheryl Figliano.

*Recommended by these individuals from their donor advised funds of the Jewish Federation of Cleveland. **Of blessed memory. ***Matching gift.
 ■ JFSA Cleveland Gift ● Jewish Federation of Cleveland Supporting Foundation
 ◆ Hebrew Shelter Home Gift ▼ PLAN Gift ▲ JFS Akron Gift ◆ College Financial Aid Program Gift
 We make every effort to ensure the accuracy of these lists. Please contact the Development Department with any corrections at 216.504.6451.

Responding to the Need to Keep the Holidays



Clients celebrated Rosh Hashanah with holiday gift bags delivered by JFSA staff. TOP: Every gift bag contained all the items needed to enjoy a new year. MIDDLE: Dorothea Gruenbaum of Mayfield Heights BOTTOM: Helena Ingber, Holocaust survivor of Pepper Pike.

- Lorrie and Alvin Magid ◆
 - Management Recruiters International Inc. ■
 - Bruce and Rita Mandel ■
 - Joseph and Janette Mannarino ■
 - Mimi Markis ▲
 - Marlene Mayers ■
 - Donald and Sara Messinger ■
 - Anne Meyers ■
 - Lillian Milder** ◆
 - Bernard and Rene Miller ■
 - Laurie Mitchell Billowitz and Aaron Billowitz ◆
 - Ellen and Herb Moss ■ ▲
 - Judith Noble Lasher and Edward Lasher ▲
 - John and Linda Parkowski ■
 - Timothy and Rose Pasek ▼
 - Terri Perelman-Hall ■
 - Beth and Scott Putchel ■
 - Heddy and Leonard Rabe ■
 - Susan and Barry Reis ■
 - Kathleen Riley ■
 - Robert and Eleanore Risman ■
 - Marcia and David Robbins ■
 - Rabbi Daniel Roberts and Elaine Rembrandt ■
 - Daniel Rose** ◆
 - Anita Rosenbaum ◆
 - William and Kimberly Rosner ▼
 - Phyllis Rotman ■
 - Tammy Rubin ■
 - Teresa Rudin ■
 - Sabet and Jeanne Sabet ▲
 - Sheri and Billy Sax ■ ◆
 - Alan and Elissa Schabes ◆
 - Deborah Scheiner ■
 - Jack and Phyllis Schubert ◆
 - Gretchen Schumacher ■
 - Kacie and Greg Schwartz ■
 - Stephan** and Patricia Schwartz ■
 - Leslie and David Seiger ■
 - Maude and Melvin Shafron ■ ◆
 - Jon and Barbara Shane ■
 - Kathy and Brad Shapiro ■
 - Eleanor Shaver ■
 - Brad and Elisabeth Sherman ■
 - Steven Silver ■
 - Julius and Ginny Simmons ▼
 - Beth and Howard Simon ■
 - Marilyn and Stephen Sniderman ■
 - Mildred Stern ▲
 - Peter Strauss ■
 - John and Judith Suhadolnik ■
 - Elizabeth and Joshua Sunshine ◆
 - Stanley and Marianne Tepper ■
 - Karen Tindel ■
 - Trident United Way ■
 - Scott Valentine ■
 - Heather and Michael Vidmar-McEwen ■
 - Sandra Wager ■
 - Joseph Wain ■ ◆
 - Philip and Margaret Wasserstrom ■
 - Wendy Waterman ▲
 - Neil Waxman ■
 - Susan Weingold ◆
 - Rabbi Stephen and Naomi Weiss ■ ◆
 - Max Wexler** ■
 - Lisa Wither ■
 - Wendy and Steven Zimmerman ■
 - Martha Zlotnik ■
 - M. Cory Zucker ◆
- Up to \$49**
- Anonymous (4) ■
 - Diane Adams ■
 - Linda Adams ■
 - Mark and Marsha Altman ▲
 - Eileen Altshuler ■
 - Anshe Chesed Fairmount Temple ■

*Recommended by these individuals from their donor advised funds of the Jewish Federation of Cleveland. **Of blessed memory. ***Matching gift.
 ■ JFSA Cleveland Gift ● Jewish Federation of Cleveland Supporting Foundation
 ◆ Hebrew Shelter Home Gift ▼ PLAN Gift ▲ JFS Akron Gift ◆ College Financial Aid Program Gift
 We make every effort to ensure the accuracy of these lists. Please contact the Development Department with any corrections at 216.504.6451.

Anne Arch◆
 Rochelle Arian ■
 Marcia and Alan Arons ■
 Gail and David Bailys ■
 Linda Barnett ■
 Toby Bass-Trevis ■
 Steven Berger ■
 Sandy and Robert Berkowitz ■
 Lisa Bernd ■
 Michael and Sylvia Blain ■
 Joanne Blanchard ■
 Leah Bliman▲
 Ervin and Beata Boja ■
 Jane Booth ■
 Helen Braun ■
 Jacquie Brennan ■
 Joni Broderick ■
 Richard and Jacqueline Brooks◆
 Peter and Tamar Brosse ■
 Barbara and Barry Brouman ■
 David and Avril Burg◆
 Edwin and Lorraine Calhoun ■
 Francesco and Giuseppina Catena ■
 Eliot and Susan Charnas ■
 Susannah Cohen ■
 Rochelle and Arnie Cohn ■
 Greg Cooper ■
 David Cunix ■
 Stephanie and Jeffrey Danzinger ■
 Jay and Jane Davis ■
 Patti Dery ■
 Sheryl Dew ■
 Ruth Dobres ■
 Junior Doughty ■
 Dell and Anita Duncan ■
 Carol Eagles ■
 Gerald and Shulamith Erenberg ■
 Arlene Fine ■
 George and Bela Fischer◆
 Elizabeth Fish ■
 Sanford Fish ■
 Betty Fishman ■
 Ellen Fishman ■
 Jacqueline Freedman ■◆
 Phyllis Fried Goldenberg and
 Steven Goldenberg ■
 Bernard and Linda Friedman ■
 Judith Friedman ■
 Phillip and Jessica Friedman ■
 Sindi and Michael Friedman ■
 Matthew and Elizabeth Fullerman ■
 Elaine and Rick Garrison ■
 David and Ellen Gellin ■
 Marcie Gilmore ■
 David Glaser ■
 Patricia Glick ■
 Sidney and Faye Glick▲
 Bonnie and Jeff Goldberg ■
 Hollie Goldberg▼
 Phyllis and Don Goldberg ■
 Miriam and Marcy Goldstein ■
 Gary and Loe Goldwasser ■
 Chaim Evan and Esther Goodman◆
 Howard and Bonnie Goodman ■
 Joel Gottesman ■
 Bruce Gottlieb ■
 Emily Greenberg ■
 Marlene and Steven Gross ■
 Binnie Gun and Brian Eisenberg◆
 Bernard and Karen Gunya ■
 Homer and Lois Guren ■
 James and Emily Gusky ■
 Joan Haberman ■
 Riki and Stephen Hanley ■
 Brian and Renee Heller ■
 Robert Hermann ■
 Sue Hoffman ■
 Vikki Huibregtse ■
 Edith Isaacs**▼
 Jerry and Debbie Isaak-Shapiro ■
 Dennis and Helen Israelstam◆
 Jerome and Rhoda Jacobs◆
 Stephanie Jacobs ■
 Rhona and Bob Jacobson ■
 Eugene Jermakow ■
 Mimi Kadish ■
 Steve Kammer ■
 Rochelle and Richard Kaplow ■
 Milton Katz ■
 Randy and Julie Katz▲
 Lissa Keller ■
 Judith Kirchick ■
 Virginia Klaus ■
 Allan and Millicent Kleinman ■
 Judy Klotzman ■
 Leo Knight ■
 Shelley and David Koch▲
 Margaret Kochevar ■
 Susan Kodish ■
 Kelly and Hank Kornblut ■
 Amie Kosberg ■
 Clara Kovach ■
 Marcia Kritzler ■
 Todd and Lisa Lebowitz ■
 Julie and Daniel Leizman ■
 Howard and Sheila Leuchtag ■
 Eliana LeVine ■
 Amy and Keith Levy ■
 Richard and Helayne Loeb ■
 Beverly Ludwig Fisher ■
 Galaktion Lukyanov ■
 Sandra Lusher-Waterhouse and
 Bruce Waterhouse ■
 Robert and Joan Lustig ■
 James and Susan Marder◆
 Maxine Margolis ■
 Angela Markowitz ■
 Jeffrey Marks◆
 Jane Mayers ■
 Sherrie and Yisrael Mendenhall◆

Recommended by these individuals from their donor advised funds of the Jewish Federation of Cleveland. **Of blessed memory. *Matching gift.*

■ JFSA Cleveland Gift ● Jewish Federation of Cleveland Supporting Foundation

◆ Hebrew Shelter Home Gift ▼ PLAN Gift ▲ JFS Akron Gift ❖ College Financial Aid Program Gift

We make every effort to ensure the accuracy of these lists. Please contact the Development Department with any corrections at 216.504.6451.

Responding to the Need for Connection



Over the summer, Jewish Family Service of Akron clients were treated to driveway concerts to help them enjoy live music outdoors with family, friends and neighbors. Stow High School student Sarah Biggs volunteered her time to perform the cello, which she has played for seven years.

- | | |
|--|--|
| Michael and Hedy Milgrom ■ | Tena Tarler Rosner ◆ |
| Susan and Barry Miller ■ | Ellyn Ross ■ |
| Paige and Eric Mintz ■ | Jay Ross ■ |
| Dennis and Florence Mitchell ■ | Hilary Rossen ■ |
| Deborah and Alberto Mizrahi ■ | Alice Roth ■ |
| Marcia and Leonard Molloy ■ | Donald Rothenberg ■ |
| Gordon and Joyce Mork ■ | Mary Ann and Dan Rothstein ■ |
| Mel and Harriet Morris ■ | Kelly and Gilon Rubanenko ■ |
| Al Moses ▲ | Theodore and Lynne Rudolph ■ |
| Sheilah Moshogianes ■ | Halle and Dan Saperstein ■ |
| Betsy Moss ■ | Rebecca Sattin ■ |
| Marcia and Sonny Moss ■ | Howard Saul ■ |
| Tamas and Esther Muencz ■ | Herbert and Retha Schabes ◆ |
| Marilyn and Richard Myers ■ | Cheryl and Andrew Scharf ■ |
| Janisse Nagel and
Ken Marblestone ■ | Diane and Jared Schnell ■ |
| Network for Good ■ | Ellyn Schneier ▲ |
| Janet and Steven Newman ◆ | Cathy Schreiber ■ |
| Corey O'Brien ■ | Harry Schuster ■ |
| Michael and Judy Orkin ■ | Charlotte and Bernard Schwartz ▲ |
| Hermine and David Ostro ■ | Marvin Schwartz and
Judith Miller ■ |
| Robert and Judith Pazol ■ | Elise and Randall Schwartz ■ |
| Roberta and James Pazol ■ | Stuart and Roberta Sears ◆ |
| Jamie and Daniel Peltz ■ | Teri and Michael Segal ▲ |
| Phyllis Perlman ■ | Daniel Seiger ■ |
| Ann Joy and Jeffrey Pickholtz ◆ | Steve and Becky Shaffer ■ |
| Nancy and David Polk ■ | Lynn and Adele Sheftel ■ |
| Bonnie and Howard Potash ■◆ | Clarence Shehee ■ |
| Ellen and Steven Potter ◆ | Steve Shepherd ■ |
| Jill Pupa ◆ | Michael Shore** ■ |
| Lauren Raiche ■ | Sanford and Estelle Shore ■ |
| David and Susan Rapkin ■ | Merv and Mary Singer ■ |
| Jay and Mindy Resnick ■ | Aletta and Clive** Sinoff ■ |
| Richard and Joan Rivitz ■ | Sherri and Scott Slovin ■ |
| Merrill and Sharon Roback ■ | Jessica Smith ■ |
| Beth Robbins ■ | Steven and Shari Smylie ■ |
| Debbie Rosen ■ | Sharon and Les Snider ■ |
| Anne Rosenberg ■ | Heidi and Rick Solomon ■ |
| Philip and Toby Rosenberg ■ | Donna and Howard Sperber ■ |

*Recommended by these individuals from their donor advised funds of the Jewish Federation of Cleveland. **Of blessed memory. ***Matching gift.
 ■ JFSA Cleveland Gift ● Jewish Federation of Cleveland Supporting Foundation
 ◆ Hebrew Shelter Home Gift ▼ PLAN Gift ▲ JFS Akron Gift ❖ College Financial Aid Program Gift
 We make every effort to ensure the accuracy of these lists. Please contact the Development Department with any corrections at 216.504.6451.

Sheldon and Elaine Steiger ■
 Natalie Steinberg ■
 Gail Stewart ■
 Rachael and Ralph Stewart ■
 Jim Strassman ■
 Tanita Taub ■◆
 Tyrone Taylor** ■
 Laura Templar ■
 Pam and Harry Tepper ■
 Leonard and Carole Thomas ▼
 Linda Tobin and Stephen Pepper ■
 Margaret Tomer ■
 Ronna and Alan Treinish ■
 Martha Tripi ■
 United Way of Greater Milwaukee ■
 United Way of Metropolitan Dallas ■
 Charles Varkala ■
 Richard and Shea Waldron ■
 Donna and Joel Wallenstein ■
 Paula Walters ■
 Adrienne and Melvin Wasserman ■
 Donald Weinberg ■
 Diane and Alan Weiner ■
 Emily and Eric Weingart ■
 Debra Weiser ▼
 Michael Weishaus ■
 Herbert Weiss ▲
 Lita Weiss ■
 Brenda and Bob Weltman ■
 Michael and Miki Wieder ◆
 William and Barbara Wieder ◆
 Rae Charlene and Stanton Winger ■
 Rita Winston ■
 Linda Wolfe ■
 Daniel and Ellen Worthington ■
 Sasha Yasinow ■
 A. Paul Zeitew ■
 Sandra Zieve ■

JFSA Advisory Committee Community Members

Luisa Aviv	Karen Hess	Maude Shafron
Jules Belkin	Ari Jaffe	Mel Shafron
Rabbi Moshe Berger	Eva Kahana	Janet Shapiro
Janice Bilchik	Jeffrey Kahn	Anita Siegel
Judy Blum	Sue Ellen Korach	Mendel Singer
Harlan Brick	Ron Lederman	Marty Spector
Sandra Buzney	Kristin Leuchtag	Todd Stein
Michael Byun	Beth Levine	Myra Stone
Rosemary Creeden	Judy Lipton	Kathy Tomaro
Grant Dinner	Elena Lougovskaia	Cathy Weiss
Joan Drnek	Jodi Mirman	Judy Weiss
David Fish	Louise Morris	Joseph White
Ann Garson	Meghan Newman	Idelle Wolf
Michelle Gillcrist	Elliot Posner	Edward Wortzman
Ruth Gillett	Amy Rothenfeld	John York
Erika Gold	Brian Rosenfelt	Neil Young
Penny Greenberger	Marv Schwartz	Marilyn Zaas
Inga Gutarts	Daniel Schweid	
Jean Heflich	Paula Seger	



Every week during the pandemic, Trader Joe's donates beautiful fresh flowers to JFSA for use in weekly deliveries to older adult clients.



Before the pandemic, Holocaust survivors gathered at Green Road Synagogue to celebrate Chanukah and enjoy the company of friends and volunteer students from Fuchs Mizrachi School.

Board of Directors

OFFICERS

- Dan Zelman
*Board Chair**
- David Rosenberg MD
*Vice Chair**
- Shari Perlmutter
*Vice Chair**
- Michael Klein
*Treasurer**
- Dara Yanowitz
*Secretary**
- Michael Guggenheim
*Assistant Treasurer**
- Susan Bichsel, PhD
*President and CEO**

DIRECTORS

- Trish Adler
- Gary Bilchik
- Carol Burg, MD
- Ethan Cohen*
- Bonnie Cole
- Shoshana Dessler-Jacobs
- Boris Gliner, MD
- Sandra Goldman
- Allan Goldner
- Richard Halle
- G. Kent Hayes
- John Herman*
- Michelle Hirsch*
- Suellen Kadis*
- Sherelynn Lehman
- Daniel Messeloff
- Patricia Mintz*
- Dianne Newman
- Wendi Pavlofsky
- Allan Pearl
- Heidi Perla
- Kevin Robertson
- Larry Rothstein
- Michele Rothstein
- Patty Rubin
- Robert Schwartz, MD
- Eric Shapiro, MD

- Erica Starrfield
- Terri Steindler
- Eric Synenberg
- Sally Wagner**
- Michael Weiner
- John Wirtshafter*
- Jonathon Wise*
- Richard Zelin
- Chad Zimmerman

LIFE DIRECTORS

- Marilyn Bedol, *Special Advisor**
- Eileen Blattner, *Special Advisor**
- Robert Blattner*
- Cynthia Bruml*
- Philip Cohen, *At Large**
- David Goldberg
- Sally Good
- Sid Good, *Special Advisor**
- Herbert Goulder
- Alvin Gray**
- Robert Immerman
- Donald Jacobson
- Dolores Kleinman*
- Andrew Kohn*
- Harvey Kotler, *Immediate Past Chair**
- Marvin Lader
- Arthur Mayers
- Chuck Mintz
- Karen B. Newborn
- Michael Peterman
- Charles Rosenberg
- James Spira
- Myrna Spira
- Eleanor Steigman
- David Strauss
- Will Sukenik
- Phillip Wasserstrom
- Sally Wertheim, PhD
- William Wortzman, *At Large**

*Member of Executive Committee

**Of Blessed Memory

Management Team

Susan Bichsel, PhD

President and Chief Executive Officer

David Hlavac, MBA

Vice President & Chief Financial Officer

William Bode

Controller, Director of Finance

Robert Bologna, MBA

Senior Director, Human Resources

Debbie Chickering, MBA

Executive Director, Achieving Potential for Individuals with Disabilities

Laura Dales, MBA

Executive Director, Caring at Home

Ginny Galili, MSSA

Executive Director, Strengthening Families

Jaime Lowy

Associate Director, Caring at Home

Angela Markowitz

Executive Assistant to the CEO and CFO

Nata Mendlovic, MBA MT (ASCP)

Chief Operating Officer, Alyson's Place Medical Clinic

Zeeba Mercer, MBA

Chief Executive Officer, Center for Cognition and Recovery, LLC

Jeff Morris – Retired

Director, Operations

Karen Leizman Moses, Esq.

Major Gifts Officer

Thierry Riek, MBA – Retired

Senior Director, Planning and Performance

Anne Rosenberg

Vice President, Marketing and Development

Jessica Rosenblitt, JD

Manager, College Financial Aid Program

Michael Schultz, MS

Director, Information Management

Karen Tindel, MBA

Director, Revenue Cycle Management

Timothy Williams – Retired

Vice President and Chief Information Officer



Attending last year's Annual Meeting: LEFT: Shuronda Treece and Karen Tindel; MIDDLE: Erica Perkins and Veronica Bellay; RIGHT: Bill Bode, Lisa Hansen, and Laura Dales

Programs and Services

JFSA ACHIEVING POTENTIAL for Individuals with Disabilities

Solutions to help people with mental illness and developmental disabilities achieve their potential through greater independence and inclusion.

Intellectual/Developmental Disability Services

- Housing and Residential Services
- Adult Day Support

Mental Health, Intellectual/Developmental Disability, Other Cognitive Disability Services

- Counseling and Psychiatry
- Cognitive Enhancement Therapy (CET)
- Art Therapy
- Case Management
- Social Recreation and Wellness
- Vocational and Employment Services
- Gloria and Irving Fine Family Advocacy and Support Services
- Pooled Disability Trust
- Representative Payee/Bill Paying
- Transitions

PLAN of Northeast Ohio

- Family Advocacy
- Carol and Marv Lader Journeys Program
- Lifetime Planning
- Office Volunteer Program
- Peer Employment
- Social Activities

JFSA CARING AT HOME

Solutions for seniors and other adults to manage their independence and live healthier lives.

- Private Duty Home Health
- Skilled Nursing and Skilled Physical, Occupational, and Speech Therapies
- Home Cleaning Services
- Philips Lifeline™
- Personal Assistance
- Kosher Home-Delivered Meals
- Holocaust Survivor Support Services
- Geriatric Case Management and Counseling
- JFSA Shuttle on the Go! Transportation

JFSA STRENGTHENING FAMILIES

Solutions to achieve self-sufficiency in the face of financial crisis, homelessness, or domestic abuse.

Financial Support

- Temporary Financial Assistance
- Forward Focus Financial Literacy and Homelessness Prevention

Domestic Violence Services

- Case Management and Safety Planning
- Individual Counseling
- Journey to Empowerment Support Groups
- Justice System Advocacy and Legal Resources
- Special Population Outreach
- Community Education and Professional Training

Hebrew Shelter Home

- Temporary Shelter for Women and Children

JFSA EMPOWERING YOUTH

Solutions to strengthen the role teens and young adults play in our community.

- College Financial Aid Program
- **KNOW ABUSE™** Teen Dating Violence Prevention
- Summer Campership
- Horvitz YouthAbility Program

ADDITIONAL PROGRAMS

Alyson's Place Medical Clinic

- Primary Care*
- Dental Services**
- Psychiatry
- Podiatry Services
- Geriatric Medical Assessment
- Health Education
- Ophthalmology

**provided by MetroHealth System.*

***provided by CWRU School of Dental Medicine.*

Alzheimer's Disease and Dementia Caregiver Support Program

Solutions to support family caregivers to individuals with Alzheimer's disease or dementia.

- Care Coordination
- Savvy Caregiver Training
- Respite Support

Center for Cognition and Recovery, LLC.

National provider of CETCLEVELAND® programming & training

Jewish Family Service of Akron

Solutions for individuals and families living in the Greater Akron area.

FUNDING:

Social services for Jewish Nazi victims have been supported by a grant from the Conference on Jewish Material Claims Against Germany. Additional support provided by The Alfred Landecker Foundation, Inc. (Landecker Fund) and The Harry and Jeanette Weinberg Holocaust Survivor Emergency Assistance Fund administered by the Conference on Material Claims Against Germany for the benefit of needy Jewish victims.

Funding for JFSA Alzheimer’s Disease & Dementia Caregiver Support Program is made possible by the Jewish Federation of Cleveland and the US Department of Health and Human Services. This project was supported, in part by grant number 90ADPI0019-01-00, from the U.S. Administration for Community Living, Department of Health and Human Services, Washington, DC 20201. Grantees undertaking projects under government sponsorship are encouraged to express freely their findings and conclusions. Points of view or opinions do not, therefore, necessarily represent official Administration for Community Living policy.

MEMBER:

Greater Cleveland Security Council, Jewish Federation of Cleveland, Jewish Women International, National Alliance on Mental Illness (NAMI Ohio), National Association of Jewish Human Service Agencies, National Coalition Against Domestic Violence, Ohio Council of Behavioral Healthcare Providers, Ohio Council for Homecare, Ohio Domestic Violence Network, Ohio Providers Resource Association, Shalom Task Force, United Way Services of Greater Cleveland.

CERTIFIED:

Medicare and Medicaid, Ohio Department of Mental Health and Addiction Services, Department of Developmental Disabilities.

LICENSED:

Ohio Department of Mental Health and Addiction Services, Opportunities for Ohioans with Disabilities (OOD).

ACCREDITED:

Commission on Accreditation of Rehabilitation Facilities (CARF).

CONTRACT AGENCY:

Alcohol, Drug Addiction and Mental Health Services Board of Cuyahoga County, Conference of Jewish Material Claims Against Germany, Cuyahoga County Board of Developmental Disabilities, Cuyahoga County Department of Human Services, Geauga County Board of Developmental Disabilities, Jewish Federations of North America, Ohio Department of Job and Family Services, Ohio Direction for PASSPORT in Summit County, PASSPORT, Philips Lifeline, Summit County Board of Developmental Disabilities, US Department of Health and Human Services. Western Reserve Area Agency on Aging (WRAAA).



Claims Conference ועידת התביעות
The Conference on Jewish Material Claims Against Germany



Jewish Community BOARD OF AKRON



NETWORK of Jewish Human Service Agencies



RESILIENCE

TEAMWORK

COMMITMENT

COMPASSION

ESSENTIAL

