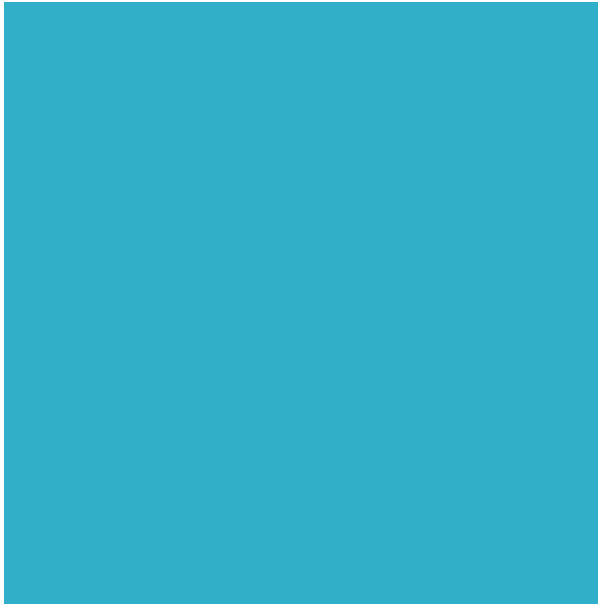


JEWISH FAMILY SERVICE ASSOCIATION OF CLEVELAND



Designing the Future

2019 Annual Report



**JFSA helps
individuals and
families find
solutions to face
life's challenges
with confidence.**

Letter from the Board Chair and President & CEO

Dear Friends,

This year we celebrate new beginnings and the power of our collective community. Between October and July we watched with awe as our headquarters was transformed week by week into our new home. Taken down to the studs last October, our new space now sparkles with the energy of clients, staff and the light that shines in from numerous well-positioned windows throughout the building. In any given hour of the day, staff can now collaborate easily in one building, clients can use our large meeting spaces for Zumba or yoga in the evenings, and our art studio is brimming with creativity through the week. Alyson's Place, our medical clinic operated with MetroHealth, is larger and more accessible, and now hosts our dementia caregiver support program as well.

None of this would have been possible without the dedication and foresight of our lay leaders and special volunteers Jeffrey Kahn and Gerilyn Gleason, who devoted countless hours to ensure the look and feel of this project came together as we hoped, and better yet, on schedule. Without our special donors and friends of the agency, we could not have embraced this opportunity.

We hope you will enjoy our stories of success and inclusion in this year's report. JFSA is community, and we are committed to ensuring families and individuals are welcome in our home, and remain active members of whichever community they claim as their own.



Dan Zelman
Board Chair



Susan L. Bichsel, PhD
President and CEO



Dan Zelman



Susan L. Bichsel, PhD



STRENGTHENING *families*

JFSA helps families achieve self-sufficiency in the face of financial crisis, homelessness and domestic abuse.

Bringing Care and Compassion **TO THE LEGAL SYSTEM**

Attorney Melanie GiaMaria advocates for survivors of domestic violence.

For nearly 20 years, Melanie GiaMaria has been a steady presence at JFSA for both the domestic violence service clients she represents, and the professional staff with whom she works. A private attorney, Melanie started to represent JFSA clients with the launch of its Legal Advocacy Program, which helps individuals navigate the legal system to obtain restraining orders, divorce and provide representation in child custody cases. While advocates work with clients on their emotional challenges, Melanie focuses on the legal challenges they face.

Legal services are critical for women dealing with an abusive partner. The program was developed to serve the most at-risk clients who seek legal representation, do not qualify for legal aid, or do not have access to their marital assets due to an abusive spouse who restricts access to finances.

Still, the legal system presents its own challenges. “The legal system can be another way for victims to be victimized,” says Melanie. “No matter which court we work with – criminal, civil, or family relations – the perpetrators have become very smart about how to manipulate the system. They delay hearings, they don’t show up for court appearances, or they find ways to avoid being served with a lawsuit. It’s not unusual for the process to take years to resolve.”

Other barriers can be present as well. “Sometimes the court itself renders decisions that boggle the mind,” she says. “A client can have evidence or pictures of abuse and the court can still mandate the perpetrator to have custody of the children. The impact on the children is immeasurable and so painful. But we work as hard as we can to make sure that that damage is as small as possible.”



“My favorite part of this program is watching the women blossom with their newly found strength.”

- Melanie GiaMaria, JD, LISW-S

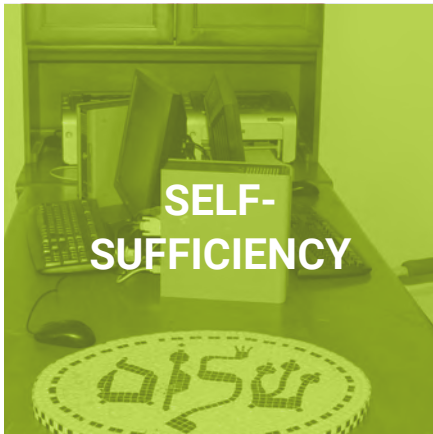
Not surprisingly, all of this takes a toll.

Melanie works side-by-side with JPSA’s Strengthening Families professional staff with each client. “I can always count on the staff. We support each other and that lets our client know we are there for them,” she says. “My favorite part of this program is watching the women blossom with their newly found strength. We work really hard to build their confidence so they understand that they are doing it for themselves and their children. We are just giving them the tools and encouragement they need right now.”

One of the factors that positively impacts the success of the program, according to Melanie, is the generosity and support of the Jewish community. “I have always been impressed at how this community takes care of each other and responds to the needs of not just the Jewish

community, but the general community as well,” she says. “For example, Legal Aid can’t always help women who are experiencing this trauma; they may not qualify for their services because their household income is too high and they don’t offer child custody representation. We provide help they can’t get elsewhere.”

Melanie also points out that it can be difficult to find attorneys who understand domestic violence and have the availability to work with clients over the long haul. “The legal piece is just one component of our holistic approach to helping abuse victims, which also includes safety planning, risk assessment, counseling, comprehensive case management and financial literacy coaching,” explains Melanie. “Together, these services provide a more effective solution for women seeking to be self-sufficient and most importantly, to live safely.”



Nearly one-half of Domestic Violence Services funding is dependent on government sources every year.

225 women, children, and men received help from Domestic Violence Services.

1,366 nights of emergency shelter and 4,035 kosher meals were provided through the Hebrew Shelter Home.



120 households received assistance, financial counseling and employment support to overcome financial distress.



237 hours of legal services were provided to women seeking restraining orders, custody arrangements and divorce.





EMPOWERING *youth*

JFSA strengthens the role teens and young adults play in our community.

Facing the Challenge of **PAYING FOR COLLEGE**

Morgan Fish's dream to become a doctor is now a reality.

“Ever since I was in high school I wanted to be a doctor,” says Morgan Fish, MD, a 2011 Orange High School graduate. At the time, she watched her father’s personal struggle with medical issues and the physicians who treated the complications resulting from his disease. “They continued to fight to save his life, even when it seemed all options were exhausted,” she remembers. I felt extremely grateful for the physicians that helped my family throughout my father’s treatment.” Sadly, Morgan’s father passed away in 2012.

Although her mother encouraged her and her sister to pursue their dreams, Morgan worried about how they would be able to pay for the cost of undergraduate and medical school. “We were somewhat comfortable, but I still needed help to fund my education.”

Morgan learned about JFSA’s College Financial Aid Program from her grandmother while



Morgan enjoys meeting new patients during her first year residency.

researching undergraduate schools. “I was very fortunate to receive grants and loans from the program,” she says. “I am especially thankful that the loans were interest-free.” Morgan also was the recipient of the Barney and Sarah Richman Memorial Scholarship and the Faber Rosen Scholarship.

While attending the Ohio State University and majoring in economics while pursuing a pre-medicine track, Morgan had the opportunity to work with cancer survivors. The experience reinforced her desire to achieve her life dream. “It was then that I fell in love with working with patients and knew for sure that becoming a doctor was what I wanted to do with my life.”

Though confident in her future direction, the thought of paying for medical school was daunting. But Morgan continued to receive JFSA’s support for graduate school through grants and loans. “It’s a very expensive journey.



“I look back and see how unbelievably grateful I am for JFSA and the community that made this possible.”

- Morgan Fish, MD

Most of my stress has not been studying for a test; it's been 'how am I going to afford this?' But having the financial support through JFSA really took away some of the stress of paying for school.”

Morgan graduated from University of Toledo College of Medicine this year and has just started her first year of a six-year residency in plastic surgery at the Cleveland Clinic. “Now that I'm starting to pay back some of the loans, I really see the value a JFSA loan provides. Government loans start compounding interest the day you sign your loan papers which means my debt will double by the end of my training. But JFSA loans are interest-free.”

Morgan also points out that many students do not pursue graduate school because of the cost and the “massive amount of debt one can incur.” That's why she credits JFSA's College Financial Aid Program with helping young

adults achieve their educational objectives and pursuing life goals.

“I am currently training to become a plastic and reconstructive surgeon and hope to eventually specialize in oncologic and breast reconstruction,” she says. “Reconstructive surgery focuses on the patient and his/her quality of life. It helps people rebuild their lives after a traumatic event or devastating diagnosis.”

After her residency, she hopes to remain in Cleveland. “My family is here, I love this city. I can't think of a better place to practice medicine.” In addition, Morgan wants to give back to the community that made this happen for her. “I can't wait to give a student what JFSA gave to me,” she says.

“I look back and see how unbelievably grateful I am for JFSA and the community that made this possible. You really can't put a price on education. It's worth every penny.”

JFSA COLLEGE FINANCIAL AID PROGRAM

JFSA Family Scholarships

Funding for the following 2018-2019 academic year scholarships were made by individual donors. Gifts to these scholarships are recognized in the donor listings beginning on page 30.

Alumni and Friends of JFSA College Financial Aid Program Scholarship

Bruml Family Scholarship

Cleveland Friends of Yeshivat Netiv Aryeh

Faber-Rosen Scholarship

Gutarts Family Scholarship

Richard Horvitz and Erica Hartman-Horvitz YouthAbility Program College Scholarship

Ruth and Charles Jacob Scholarship

Raskind Family Scholarship

Barney and Sarah Richman Memorial Scholarship

Rosskamm Family Scholarship

Amy Saltzman Scholarship

Mark Saltzman Scholarship for Business

Shelly Saltzman Scholarship for Education

William Wortzman Family Education Fund

The Yanowitz Scholarship

Yoda-Newton "Share the Luv" Scholarship

During the 2018-2019 school year, \$1,519,381 in scholarships, grants and loans were awarded to 302 students.

Jewish Federation of Cleveland Scholarships

Funding for the following 2018-2019 academic year scholarships were made possible through funds from the Jewish Federation of Cleveland.

The Morris Abrams Award in International Relations

The Ruth Weltmann Begun Memorial STEM Scholarship

The Jack W. and Shirley J. Berger Memorial Scholarship

The Jack W. and Shirley J. Berger Scholars Award

The Sophie and Henry Billys Scholarship

The Dr. Grace F. Brody Scholarship

The Myrna and Edwin Froman Memorial Endowment Fund

The Frank Joseph and Elaine Sara Garron Memorial Scholarship

The Eleanor R. Gerson Award for Graduate Students in Social Work

The Eleanor Gerson Education Fund

The Ellie Gerson Scholarship for New Americans

The Solomon and Jennie Hurvitz Scholarship

The Jaffe Family Community Service Scholarship

The Mrs. Bert Keller Fund

The Meisel Family Scholarship

The Irving I. Stone Support Fund

The Howard S. Young Scholarship

The Helen and Morris Zupnick Scholarship



ACHIEVING *potential*

JFSA helps people with developmental disabilities and mental illness achieve greater independence and inclusion.

Encouraging Creativity and Connection

A special place for Isaac Mintz to explore and achieve his potential.

In 1978 when Isaac Mintz was three years old, his parents Pat and Chuck Mintz realized he was different. Two years later there was an opportunity to move to New Jersey and Pat discovered the Princeton Child Development Institute (PCDI). This was the perfect school program for Isaac. With two years of instruction and learning and working with experts from PCDI, Pat and Chuck were exposed to new approaches to raising and educating Isaac. Isaac learned how to recite the prayers and light the candles for Hanukah at PCDI.

Returning to the Cleveland area, the Mintz family joined Temple Ner Tamid in Euclid, Ohio. Isaac was a Bar Mitzvah on his thirteenth birthday and continues to enjoy observing Jewish holidays and participating in Jewish life.

Locally with educators from Mayfield Public Schools and the Cuyahoga East Vocational Educational Consortium (CEVEC), Isaac gained workplace skills in a library setting. Isaac volunteered in the high school libraries to gain more skills. After high school graduation, he received support from the Cuyahoga County Board of Developmental Disabilities and the Cleveland Law Library Director to be placed in a position with the tasks of a library page. He worked at the Cleveland Law Library Association and held his job until budget cuts eliminated his position 12 years later.



Isaac enjoys working with clay in his ceramics class (above) and developing his computer skills at the JFSA Adult Day Support program.



“Because he participates in so many activities with others, he has become more social and connected to the community.”

- Pat Mintz

Meanwhile, his parents worked with other parents of Jewish young adults with special needs to create a family consortium residence and hired JFSA to staff and manage the home. Named Ruach House (meaning *spirit*), the kosher household is home to four adults who enjoy very active lives. Some residents participate in JFSA's Adult Day Support program at B'nai Jeshurun Congregation.

JFSA created an experience that stimulates growth, allows for creativity, helps people become more physically active, connects participants to their community, and most importantly, customizes the activities for each participant based on what their needs are, according to Debbie Chickering, executive director of JFSA Achieving Potential for Individuals with Disabilities.

Pat and Chuck enrolled Isaac in JFSA's Adult Day Support program about two years ago.

“Now Isaac is able to better dictate exactly what his program should be around his strengths and interests and he has flourished within it,” says Pat. Isaac has a passionate interest in art and music programs. He loves to help with cleaning up the classroom spaces, dishes and work spaces.

Isaac participates in ceramics class, painting, aerobics, walking, field trips to museums and going out to eat with his friends. He also assists the librarian at B'nai Jeshurun Congregation.

“Because he participates in so many activities with others, he has become more social and connected to the community,” says Pat. “Unlike other programs, this program has allowed Isaac to reach out and do things with other people. He likes to share his experiences with others and that has made a big difference in the quality of his life.”

461,180 hours of direct service were provided by **240** staff to adults with intellectual disabilities.

A fleet of **38** vans enables clients to be active in the community and lead happier, healthier lives.

598 individuals with serious mental illness received Mental Health Services.

76 individuals with mental illness obtained jobs through JFSA Employment Services.



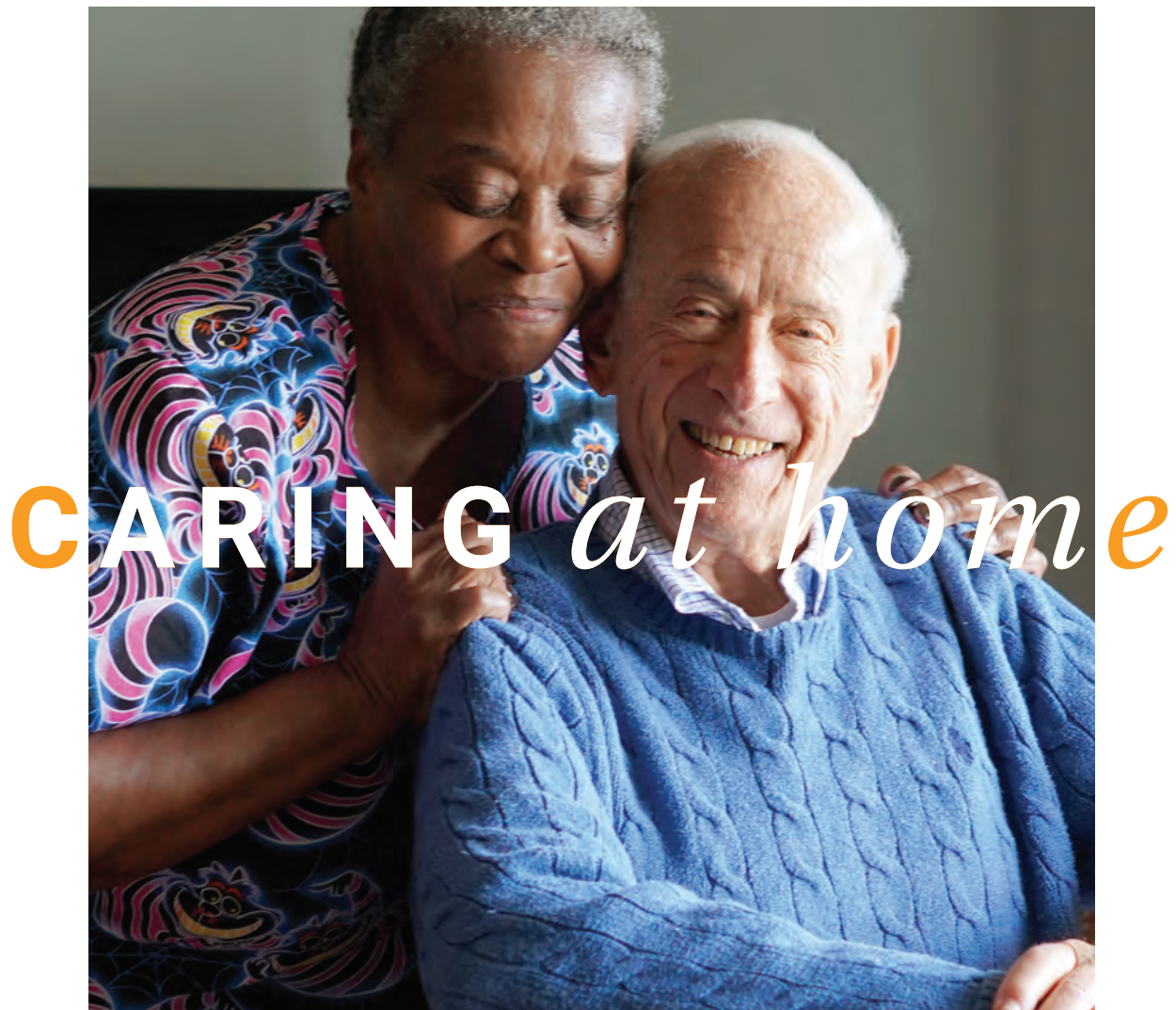
In-home services are provided in **62** residential sites in Northeast Ohio.



The Center for Cognition and Recovery, LLC has brought CETCLEVELAND to **49** community mental health agencies in **14** states since its inception.



All figures represent activity during fiscal year 2019, unless otherwise noted.



JFSA provides solutions seniors and other adults need to manage their independence and live healthier lives.

Real Caring at Home

Bob Federman and Marilyn Bedol are grateful for the care at home they receive from JFSA and for each other.

Over sixty years ago Bob Federman and Marilyn Bedol knew each other as students at Western Reserve University. But it wasn't until a few years ago that the two caught up with each other and have been together every since. Both had recently been widowed after many years of marriage to their spouses.

Finding a new relationship in their 80's was not something they ever expected to happen, but they have embraced it. What they did expect, given their stage in life, is that one day they would be faced with the challenge of finding ways to stay independent and able to live at home. That happened earlier this year when Bob experienced several medical issues.

"I knew we needed help," recalls Marilyn. "Because I've been an active volunteer with JFSA for many years, I knew to contact our Caring at Home division. Somebody was at our door the next day to speak with us to about what kind of help we needed."



(Above) Bob and his aide Betty Sumpter.



“We’re so grateful for each other and for what JFSA has provided for us.”

– Marilyn Bedol

Enter Betty Sumpter, a veteran home health aide, who has impressed Bob and Marilyn so much, they would like to adopt her! “Betty came on board running,” says Bob. “She is outstanding. She’s pleasant, capable and caring. Betty knows how to do the things I’m unable to do for myself. She made my life easier.” In addition to his daily personal activities, Betty takes Bob to get a haircut, to get his blood tests and any other errands he might need to make.

Marilyn is equally praiseworthy of Betty’s efforts. “She doesn’t know what ‘no’ is. There is a sweetness, a softness, a caring with Betty. She does whatever needs to be done in the household when Bob doesn’t need direct care.”

In addition to Betty’s assistance, a physical and occupational therapist helps Bob with exercises to maintain his strength and improve

his walking. “They are the best people I’ve ever worked with,” he proudly states.

Bob also works with a JFSA personal assistant who helps him keep his bills and bank statements straight. For Marilyn, it’s an opportunity to focus on her own work while Bob’s needs are being cared for. “I’m now much more at ease taking care of my own personal business,” she says. “I can return to the community activities that sustain me.”

Bob is especially appreciative of the feeling of security he feels with JFSA. “They know how to do this,” he explains. “Their professionalism enhances my ability to do the things that make me feel good.”

“Grateful is a key word in our vocabulary,” says Marilyn. “We’re so grateful for each other and for what JFSA has provided for us.”

Nearly **40,000** Kosher meals were delivered to frail and elderly at home by **23** volunteer drivers.

305,560 hours of private duty nursing care were delivered to older adults living at home by **185** home health aides.

3,245 rides were made possible for older adults with no transportation of their own.

548 individuals are able to live safely at home thanks to their Lifeline mobile medical alert.



COMPANIONSHIP

735 medical appointments were made at Alyson's Place Medical Clinic in the areas of primary care¹, dental², geriatric, podiatry and ophthalmology.

A photograph of a person riding a bicycle on a path, with a dog in a basket on the front. The image is overlaid with a cyan color filter.

HEALTH

794 Holocaust survivors ranging in age from 71 to 101 years, received assistance with reparations, personal care and case management, and help obtaining food, clothing and medical care.

A photograph of a caregiver in patterned scrubs interacting with an elderly man who is holding a dog. The scene is indoors, likely in a home or care facility.

SOLUTIONS

¹Provided in collaboration with MetroHealth Medical Center. ²Provided in collaboration with the CWRU School of Dental Medicine Geriatric Dentistry Mobile Unit. All figures represent activity during fiscal year 2019, unless otherwise noted.

UNRESTRICTED *financials*

July 1, 2018 through June 30, 2019. All financial data is audited. Audit is available for inspection at the agency.

Revenue and Funding Sources

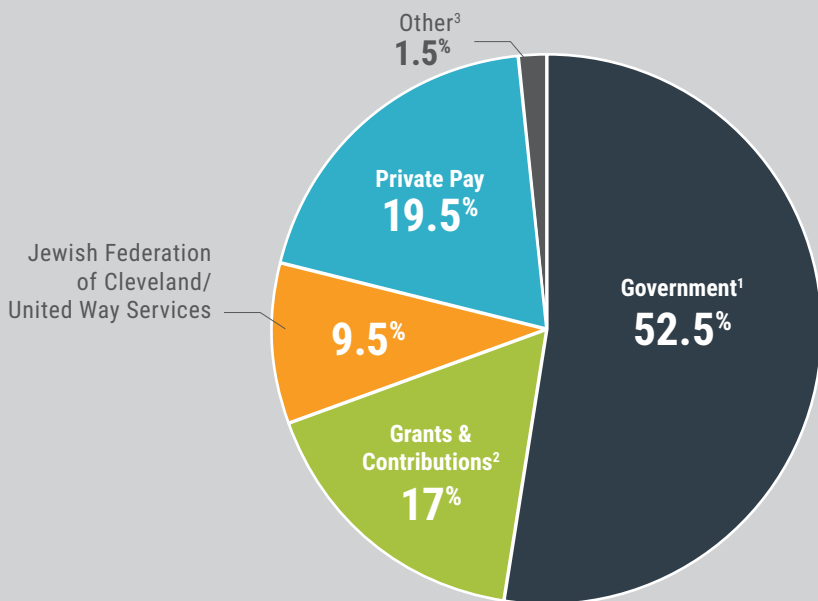
Government (Reimbursements for Client Services) ¹	\$ 15,275,142
Grants and Contributions ²	\$ 4,943,888
Jewish Federation of Cleveland/United Way Services	\$ 2,751,856
Private Pay and Other Third Party Payers	\$ 5,678,413
Other ³	\$ 431,610
TOTAL	\$ 29,080,909

Operating Expenses by Major Client Population

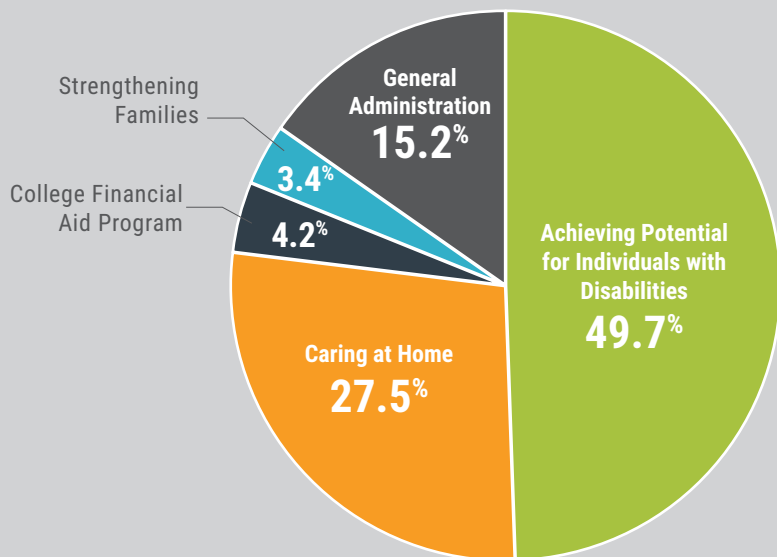
Achieving Potential for Individuals with Disabilities	\$ 13,852,522
Caring at Home	\$ 7,667,376
College Financial Aid Program	\$ 1,176,976
Strengthening Families	\$ 947,720
Total Direct Services	\$ 23,644,594
(plus) General Administration	\$ 4,244,250
TOTAL ⁴	\$ 27,888,844

¹Government Sources: Western Reserve Area Agency on Aging, The Centers for Medicare and Medicaid Services, County Board's of Developmental Disabilities, ADAMHS Boards, My Care Ohio HMO's, State of Ohio, and the Ohio Department of Human Services. ²Includes grants from public and private foundations and grants from government sources. ³Includes investment income (realized and unrealized gains and losses), rental income, management fees, and contributed services. ⁴Excludes an unfunded pension liability expense of \$544,102.

Revenue and Funding Sources



Operating Expenses by Client Population



\$29 million
operating
budget¹

700+ employees –
1 in 4 employees
has been with
JFSA for over
10 years.

Volunteers donated
23,640 hours of
personal time to
help JFSA clients
and staff, enhancing
JFSA services with a
value of **\$601,165²**

¹Represents unrestricted and temporary restricted funds.

²\$25.43 Federal Standard Rate (2018)

All figures represent activity during fiscal year 2019, unless otherwise noted.



RE-IMAGINE *the Future*
A CAMPAIGN FOR ONE JFSA LOCATION

Capital Campaign Donors

We are grateful to these individuals and families who have helped us re-imagine the future and supported our capital campaign as of November 11, 2019. If you would like to participate and take advantage of naming opportunities still available, contact Karen Leizman Moses, Major Gifts Officer, at 216.504.6407.

\$500,000 PLUS

Anonymous
The Semi J. and Ruth W.
Begun Foundation
David and Inez Myers Foundation
Will and Jan Sukenik

\$100,000 - \$499,999

Fran and Jules Belkin
Lynne Marcus Cohen and Philip Cohen
Karen R. Horwitz and Jeffrey Kahn
Brian H. Kravitz
Shari and Michael Perlmutter
Enid B. and David M. Rosenberg, MD
Jackie and Fred C. Rothstein, MD
and Family
Eileen Sill
William Wortzman
Dan and Ellen Zelman Family
Foundation ●

\$50,000 - \$99,999

The Children and Grandchildren of
Bob and Eileen Blattner
Cynthia and Robert Bruml and Family
Gerilyn Gleason
Wendy and Richard Halle Family
Marvin and Carol Lader
The Milton and Tamar Maltz
Family Foundation

\$20,000 - \$49,999

Sue Frankel
G. Kent and Jerrye Hayes
Suellen and Lawrence Kadis
The Family of Norma and
Harvey Kotler
Meisel Family Foundation ●
The Alex and Anne Miller Family
Charitable Fund/Sally Good/
Sid Good
The Weiss Family

\$10,000 - \$19,999

Anonymous
Trish and Mark Adler and Family
Marilyn and Marshall** Bedol
Eileen and Robert Blattner
Marc and Sherri Blaushild
Bonnie and Michael Cole
Elise and Allan Goldner
The Greenberg and Rafal Families
Lori and John Herman
Michael B. Klein
Medical Mutual
Eric and Jane Buder Shapiro
Cheryl Davis and Jonathon Wise
Dara and Alan Yanowitz/
Donna Yanowitz

\$5,000 - \$9,999

Nan Cohen and Daniel Abrams
Andrew and Joan Kohn
Terri C. Steindler

\$2,500 - \$4,999

Ethan, Gena, Susannah and
Avery** Cohen

\$1,800 - \$2,499

Anonymous
The Bichsel Rusnak Family
Leah Weiss Caruso and
Rabbi Joshua Caruso
Ginny and Gadi Galili
Kevin, Sheila, Brian and
Kaitlyn Margolis
Angela Markowitz
Karen Leizman Moses and
Barry Moses
Karen and Norton Newborn
Sharon and Kevin Robertson
Charles and Maxine Rosenbaum
Simon Family Foundation ●

UP TO \$1,800

Gary and Janice Bilchik
Heidi and Bernard Perla
Robert and Sandy Schwartz

**Of blessed memory. ● Jewish Federation of Cleveland Supporting Foundation



The new Client Art Studio is full of energy boosting creativity.

A Campaign for ONE JFSA LOCATION

DONOR PROFILE:

Gerilyn Gleason, CCIM

Her Passion for Design Is In-kind.

The bright and modern interiors of JFSA's new headquarters are thanks to the vision of interior designer Gerilyn Gleason, CCIM. But in addition to her talents, JFSA benefitted from her generosity of 500 plus hours of professional time she donated to create and implement the comprehensive interior design plan for JFSA, including furniture, flooring, window treatments, lighting, appliances and many other office elements.

“When I first met with Susie Bichsel last year, I learned all about what JFSA does. Then I met the staff and spent a lot of time with them at the Drost and PDC buildings just observing,” Gerilyn recalls. “I got a solid feel for how the staff works with clients, how they organize and use storage, and how they communicate with each other.” She also asked the staff what they thought could be improved in the new office in terms of comfort, storage, even lighting.

Her design not only addresses the various functional needs of the agency, but also incorporates the new JFSA branding visuals. “The design is monochromatic





Windows in every workspace are one of the many security features that enable staff members to have clear line of site.



Staff and visitors enjoy brighter spaces with the use of LED lighting throughout the building.



JFSA branding is evident throughout the building.

using gray tones in the foundation in the flooring and on the walls. We used the bright colors in the JFSA logo as pops of color throughout the building to create a cheery and bright space.”

The geometric mosaic concept incorporated in the flooring and the lobby walls originally stemmed from a floor sample of a tile design she found two years ago and had saved because “it spoke to me” and she knew she would use it one day. Once the JFSA project presented itself, she knew that this tile was perfect for the JFSA design. “To me as an artist, a mosaic reflects all the pieces and parts that make this great organization. It all comes together to create one beautiful thing.”

Her decision to donate her professional time came over time. “This is a very giving organization. The amazing people that work

here work very hard to provide these services,” she says. But what impressed Gerilyn most was the Horvitz YouthAbility program. “It was the icing on the cake when I met with them. I love this program because it helps special needs individuals to achieve their higher capability,” she continues. “Moreover, I knew they wanted an art room and I wanted to make that happen for them. I know how important art is to our well-being. So I decided to donate my time to a cause that I really feel passionate about.”

Gerilyn continues to donate her professional time helping to guide how new building features will be designed, including a donor recognition wall and a history exhibit. She is glad that she is able to provide in-kind services to JFSA and encourages others in the same position to do the same. “This is a way I am able to contribute in a personally meaningful way that also supports the agency.”

“To me as an artist, a mosaic reflects all the pieces and parts that make this great organization. It all comes together to create one beautiful thing.”

– Gerilyn Gleason, CCIM

DONOR PROFILE:

Fred and Jackie Rothstein

Finding solutions for their family

When Fred Rothstein's mother died seven years ago, he and his wife Jackie faced the challenge of helping his younger brother who had lived with his mother until her death. Their father had died 10 years earlier. Fred's brother had been struggling with mental health issues for many years and now had to live on his own.

Both Fred and Jackie tried everything they could do to help his brother adjust, find a new residence, help him with medical appointments, handle his household expenses, but found the challenges of working with him daunting. "You could never know with him. He may be good for a week, and then the next day he doesn't want to talk to you," says Fred. "You get so frustrated. We worried we were not doing right by him," adds Jackie.

A friend suggested she call JFSA to see how they could help. Jackie had known about JFSA from her volunteer work with NCJW (National Council of Jewish Women) when JFSA was located on Taylor Road years ago.

"JFSA jumped right in," she says. "Jane helped us get him an apartment, arrange for JFSA to handle his household bills, and have someone take him to his medical appointments. She helped bring order



to his life." Fred agrees. "He is functioning so much better now."

JFSA is also helping Jackie's mother, Betty, to stay active in the community. Betty volunteers twice weekly with JFSA's Older Adult Services staff, assisting them with office activities in the new building.

Philanthropy has always been part of Jackie's family, starting with her grandmother who helped those in need anonymously. Jackie's mother Betty established a scholarship with JFSA's College Financial Aid Program. But for Fred and Jackie, supporting JFSA's capital campaign was a personally meaningful way for them to give back for all the care and compassion their family has received.

Their generous gift has helped JFSA purchase and renovate its new headquarters in Pepper Pike. "We wanted to help JFSA help others the way they helped us," says Jackie. "We are grateful for the opportunity to give back to an organization that has given so much," says Fred.

ENDOWMENT FUNDS

These funds maintain the principal in perpetuity and allow JFSA to use the income where it is designated. List represents funds as of 7/1/2018. Gifts to these funds are recognized in the general donor listings.

Ascentia Endowment

Supports Ascentia programming and services for people with intellectual disabilities and/or mental illness.

Jewish Federation of Cleveland Ascentia Centennial Initiative Endowment*

Supports Ascentia programming and services for people with intellectual disabilities and/or mental illness. *Funded in large part with gifts from the Aron and Dorothy Drost Centennial Initiative Ascentia Endowment Fund and from Marvin and Carol Lader via the Marvin Lader JFSA Centennial Initiative Ascentia Endowment Fund.*

Deborah Ann Baker Memorial Fund

Supports clients with few financial resources to enjoy quality of life activities. *Gift of Fannie** and Ed** Baker.*

Berns Newborn Thomas Endowment Fund to Support Older Adults in Need

Provides subsidies for services and purchases for needy older adults who strive to remain safely, securely and comfortably in their homes. *Gift of Karen and Norton Newborn. Funded in part with a matching gift from Robert Immerman.*

Stanley and Betty Blum Endowment Fund

Provides JFSA with annual support in perpetuity for any of JFSA's highest priority needs as determined by JFSA President & CEO and/or by any member of the JFSA Executive Team. *Gift of Stanley Blum**.*

Irene and Eugene Brudno Fund to Serve Persons with Severe Mental Illness

Supports services for persons with severe mental illness and to fund Ascentia management and infrastructure costs. *Gift of the Irene and Eugene Brudno Charitable Trust.*

Lynne and Philip Cohen Family Fund for Youth Programming

Supports programming for youth. *Gift of Lynne Marcus Cohen and Philip Cohen. Funded in part with a matching gift from Robert Immerman.*

Lois J. and Larry Davis Family Endowment Fund of the Jewish Federation of Cleveland*

Supports Hebrew Shelter Home capital improvements and programming for "at-risk" families. *Gift of Lois Davis.*

Families at Risk Endowment Fund

Supports the Hebrew Shelter Home and Family Violence Services for individuals experiencing homelessness, domestic violence and/or financial hardships and supports KNOW Abuse™ teen outreach and prevention. *Funded in part with matching gifts from Robert Immerman.*

Richard Horvitz and Erica Hartman-Horvitz YouthAbility Program Endowment Fund*

Supports YouthAbility programming. *Gift of Richard Horvitz and Erica Hartman-Horvitz via the Richard Horvitz Centennial Initiative JFSA Ascentia Endowment Fund.*

Immerman Jewish Community Housing Centennial Initiative Endowment Fund*

Supports affordable supportive housing for individuals with disabilities and other at-risk populations. *Gift of Robert Immerman.*

JFSA Permanently Restricted General Endowment Fund

Supports long-term sustainability of the Agency. *Funded in part with matching gifts from Robert Immerman.*

JFSA Volunteer Activities and Education Endowment Fund

Supports JFSA volunteer activities and educational enrichment for JFSA staff supporting volunteer activities. *Gift of Anonymous Donor. Funded in part with a matching gift from Robert Immerman.*

Keshet Fund

Supports programming in the Orthodox Jewish community. *Gift of the Klein, Jaffa and Halpern families.*

Harvey Kotler and Norma Kotler Endowment Fund

Supports Families at Risk Endowment Fund. *Gift of Norma and Harvey Kotler. Funded in part with a matching gift from Robert Immerman.*

MRDD Endowment

Supports programming and residential services for adults with intellectual and developmental disabilities.

PLAN Endowment

Supports PLAN's quality of life programs and holistic recovery services that help those challenged by mental illness and/or cognitive disabilities progress in their recovery. *Funded in large part with a gift from the Maltz Family Foundation.*

Cary and Barbara Root Fund for Fostering

Ascentia Communications through Technology Supports funding for communications to Ascentia families. *Gift of William Wortzman.*

Sarah and Josephine Rosin Fund

Supports programming for individuals with mental disabilities. *Gift of the Trustees of the Sarah Rosin Trust.*

Abraham and Pauline Segal Fund for In-Home Support of the Elderly

Supports funding for older adults who wish to remain at home. *Gift of Rita Saslaw, Michael Saslaw and Maryellen S. Oberman.*

The Wirtshafter Family Fund

Provides unrestricted endowment support to JFSA. *Gift of John and Linda Wirtshafter. Funded in part with a matching gift from Robert Immerman.*

Anne Wortzman Fund for Work, Social and Recreation Skill Building for Persons with Mental Disabilities

Supports programming for individuals with intellectual disabilities and/or mental illness. *Gift of William Wortzman.*

The Wortzman and Levine Family Endowment Fund in Honor of Susan Bichsel

Provides unrestricted endowment support to JFSA in honor of Susan Bichsel. *Gift of the Wortzman and Levine families. Funded in part with a matching gift from Robert Immerman.*

Other General Endowment Funds

Established by the JFSA Board of Directors.

- JVS Endowment Fund
- Kaufman Scholarship

**Operated under the auspices of the
Jewish Federation of Cleveland.
**Of blessed memory.*



NON-ENDOWMENT FUNDS

These funds have been designated to support specific programs, projects or needs.

List represents funds as of 8/22/2018. Gifts to these funds are recognized in the general donor listings.

Hope and Stanley Adelstein JFSA Care at Home Fund

Supports JFSA Caring at Home services for needy adults who wish to remain in their home. *Gift of Hope** and Stanley** Adelstein.*

Trish and Mark Adler Fund for Group Home Residents

Supports quality of life enhancements for residents of supportive living sites and group residences. *Gift of Trish and Mark Adler.*

Alumni and Friends of JFSA College Financial Aid Program Scholarship Fund

Supports qualified undergraduate and graduate college students with the cost of their college tuition. *Gift of individual donors.*

Marilyn and Marshall Bedol Fund for Social and Recreational Programming for the Special Needs Community

Supports social and recreational outings for adults with mental illness and/or mental disabilities. *Gift of Marilyn and Marshall** Bedol.*

Fran and Jules Belkin Creative Arts Fund

Supports creative art, music and theatre programming for JFSA adult clients. *Gift of Fran and Jules Belkin.*

Betty and Nathan Berliner Family Fund

Expands support to Holocaust Survivors through the delivery of kosher food and flowers in recognition of a life cycle event. *Gift of Irving Berliner in memory of his parents, Betty** and Nathan** Berliner.*

Susan Bichsel Discretionary Fund

Supports client needs and staff recognition. *Gift of the JFSA Board of Directors in honor of President and CEO Susan Bichsel.*

Norman J. Danzig Memorial Fund

Establishes the Danzig Award for Lay Leadership and supports the professional development of lay leaders. *Gift of the JFSA Board of Directors in memory of Board member Norman Danzig.*

Wendy and Melvyn Dinner Family Fund in Memory of Hilda and Eli Green

Supports operations at the Hebrew Shelter Home. *Gift of Wendy and Melvyn Dinner.*

Irving and Gloria Fine Fund for Quality of Life Enhancements

Supports quality of life funding for adults with intellectual and developmental disabilities. *Gift of Irving** and Gloria Fine.*

The HBSU Fund Supporting the JFSA Communal Fellowship

Provides one and two year opportunities for upper level college students, graduate students and/or prospective students committed to living and learning in a Jewish communal setting supported by JFSA professional staff. *Gift of the HBSU.*

Jean Heflich Employee Recognition and Enrichment Fund

Supports furthering JFSA employees' knowledge and skills, enhancing their careers, augmenting the work they perform and awarding their extraordinary performance in the workplace. *Gift of Jean Heflich.*

Peter Hoke Memorial Fund to Support Ascentia Mental Health Services

Supports activities, outings, events and unfunded needs of Ascentia clients. *Gift of contributors in memory of Peter Hoke**.*

Donald and Diane Kravitz Emergency Financial Assistance Fund

Provides emergency financial assistance for JFSA clients. *Gift of Brian and Lisa Kravitz.*

Kravitz Family Fund

Supports JFSA clients owning pets with expenses associated with caring for a pet(s) at home. *Gift of Brian and Lisa Kravitz.*

Seth Loeb Lettofsky Memorial Fund for Social and Recreational Programming

Supports social outings and recreational activities for adults with mental illness. *Gift of Rabbi Alan and Jean Lettofsky.*

Anne and Alex Miller Fund

Supports services to the elderly. *Gift of Anne** and Alex** Miller.*

Enid B. and David M. Rosenberg, MD Healthcare Engagement Fund

Supports the cost of malpractice insurance for retired healthcare professionals who volunteer their services at JFSA. *Gift of the Enid B. and David Rosenberg Family Foundation of the Jewish Federation of Cleveland.*

Grant S. Roth Memorial Fund

Supports JFSA clients underfunded and/or unfunded health care needs. *Gift of Robert and Margo Roth.*

Katherine A. and Noah D. Rusnak Fund for Individual and Family Needs

Supports funding to improve the health and functioning of individuals and families. *Gift of Susan Bichsel and Stephen Rusnak.*

Spira Ascentia Fund

Funds innovative initiatives that further the mission of Ascentia. *Gift of James and Myrna Spira.*

Eleanor Steigman Fund for Older Adult Services

Supports programming for older adults. *Gift of contributors in honor of Life Director Eleanor Steigman's lifetime of community service.*

Anne Wortzman Fund for Work, Social and Recreation Skill Building for persons with Mental Disabilities

Supports Ascentia programming for individuals with intellectual disabilities and mental illness. *Gift of William Wortzman.*

Lois Zaas Fund for the Maturing Community

Supports programming for the older adult community. *Gift of Donald Zaas.*

Irene and Sidney Zehman Library Fund

Supports the purchase of books for the Zehman Library. *Gift of Roslyn Wolf** and Judy Sherman** in honor of their parents.*

***Of blessed memory.*

PLANNED GIFTS

The following individuals have invested in the future of JFSA through a bequest, gift annuity or other planned gift arrangement. These planned gifts help to secure JFSA's mission and sustain its high-quality programming and services well into the future.

Anonymous (3)	Rabbi Alan and Jean Lettofsky
Hope Adelstein**	Homer McDaniel**
Stanley Adelstein**	Jean McDaniel**
Irving Bayer**	Patricia and Charles Mintz
Marilyn Bedol	Melvin J. Paris**
Jules Belkin	Shari and Michael Perlmutter
Stanley Blum**	Larry Reiss**
Eugene Brudno**	Gertrude Rice**
Irene Brudno**	Sarah Rosin**
Michael Bunsey	Anne Rosenberg
Michael and Bonnie Cole	Enid and David Rosenberg
Edith Einstein**	Phyllis Saul**
Louis Einstein**	Sanford Saul**
Peggy Einstein	James and Myrna Spira
Gloria G. and Irving B.** Fine	Will and Jan Sukenik
Amelia Gluck**	Sally Wagner
Judah L. and Esther C. Hexter	Isaak Wekselman**
Donald and Judy Jacobson	John Wirtshafter
Judith Kalman	William Wortzman
Eda Kochman**	Sandy and Tim Wuliger
Howard Kline	Renee Zinn
Marvin and Carol Lader	

***Of blessed memory. List represents commitments as of 6/30/2019.*

DONORS AND FUNDERS

The following list represents gifts and grants to JFSA, Hebrew Shelter Home, PLAN of Northeast Ohio, JFSA College Financial Aid Program, and Jewish Family Service of Akron between July 1, 2018 and June 30, 2019. Capital Campaign contributions are listed separately on page 21.

\$500,000+

Administration for Community Living ■
 Alcohol, Drug, Addiction and Mental Health
 Services Board of Cuyahoga County ■
 The Conference on Material Claims Against
 Germany, LLC ■
 Jewish Federation of Cleveland ■■

\$100,000-\$499,999

Marvin and Carol Lader ■
 David and Inez Myers Foundation ●■

\$50,000-\$99,999

The Semi J. And Ruth W. Begun
 Foundation ●■
 Gerald and Michelle Goldberg ■
 Jewish Community Housing Inc. Trust ●■
 Jewish Federations of North America ▲
 Ohio Attorney General ■
 Office of Criminal Justice Services ■
 Meisel Family Foundation/Stanley**and
 Barbara Meisel*●■
 The Milton and Tamar Maltz Family
 Foundation ■■
 Simon Family Foundation ●■
 The Treu-Mart Fund ●■

\$20,000-\$49,999

Louis, Celia and Joseph L. Abrams
 Memorial Fund ●■
 Leonard and Joan Horvitz ■
 Robert and Susan Immerman ■
 Allison O'Neill ■
 Estate of Gwendolyn J. Pulos ▲
 The E.A. and Mollie C. Schwarzenberg
 Memorial Fund ●■
 Will and Jan Sukenik Family Foundation ■■
 William Wortzman ■■▲■
 The Wuliger Foundation/Sandy and
 Tim Wuliger ■
 Dan and Ellen Zelman Family Foundation ●■

\$10,000-\$19,999

Anonymous ■
 Fran and Jules Belkin ■
 Wendy Blattner and Tom Inck ■
 Community Fund Management Foundation ■
 The Corbin Foundation ▲
 Richard and Wendy Halle* ■■
 Dolores Kleinman ■■
 Dianne and Herb Newman ▲
 Peter and Julie Raskind ■
 Sheila Reingold and Marc Benson ■
 Shelly and Mark Saltzman* ■■
 Idelle Wolf* ■■

\$5,000-\$9,999

Anonymous (2) ■■
 Akron Community Foundation ▲
 Robert and Eileen Blattner ■
 Bobby Fund ●■
 Cynthia and Robert Bruml ■■
 Lynne Marcus Cohen and Philip Cohen* ■
 Homer and Gertrude Chisholm ■
 Cleveland Joseph Project ■
 The Harry K. & Emma R. Fox
 Charitable Foundation ■
 The Peggy and John Garson
 Family Foundation ●■
 Dr. Bela Glaser Memorial Endowment Fund ●■
 Marshall and Sandra Goldman* ■
 G. Kent and Jerrye Hayes ■■
 The Richard Horvitz and
 Erica Hartman-Horvitz Foundation ●■
 Harvey and Norma Kotler* ■■
 Brian and Lisa Kravitz ■
 The Legacy Village Lyndhurst
 Community Fund ■
 The Lehner Family Foundation ▲
 Miller Good Family Donor Advised Fund*/Sally
 Good/Sidney Good ●■
 Patricia and Charles Mintz* ■
 Northern Ohio Golf Charities Foundation ▲
 The Maurice Saltzman Youth Panel ●■
 Scholnick Family Foundation ●■
 Michael and Anita Siegal Family
 Foundation ●■

*Recommended by these individuals from their donor advised funds of the Jewish Federation of Cleveland. **Of blessed memory. ***Matching gift.

● Jewish Federation of Cleveland Supporting Foundation ■ JFSA Cleveland Gift ■ Hebrew Shelter Home Gift ■ PLAN Gift ▲ JFS Akron Gift ■ College Financial Aid Program Gift
 We make every effort to ensure the accuracy of these lists. Please contact the Development Department with any corrections at 216.504.6451.



the centennial initiative
FOR JEWISH CLEVELAND

Many thanks to the following Jewish Federation of Cleveland Centennial Initiative Funds which support JFSA's Ascentia Endowment:

Becker/M&M Realty JFSA
Ascentia Endowment Fund

Aron and Dorothy Drost
Centennial Initiative
Ascentia Endowment Fund

Alvin Gray Centennial Initiative
Ascentia Endowment Fund

Richard Horvitz Centennial
Initiative JFSA Ascentia
Endowment Fund

Isenstadt JFSA Ascentia
Endowment Fund

Immerman Jewish Community
Housing Centennial
Initiative Endowment Fund

Marvin Lader JFSA Centennial
Initiative Ascentia
Endowment Fund

Louis and Sylvia Rosenblum
Memorial JFSA Ascentia
Endowment Fund

Norma and Ernie Siegler Family
Foundation ●■

Eileen Sill/Robert and Eileen Sill Family
Foundation ●■

Donald and Toni Scherzer ■■

The Smith Family Memorial Fund ■

Alfred and Mabel Steckler
Memorial Fund ■

The Michael Talty and Helen Talty Trust ■■

Michael and Danielle Weiner ■

Weizman Family Fund ■

The Bennett & Donna Yanowitz
Family Foundation ●■

Charles and Ilana Horowitz Ratner ■

Ronald and Deborah Ratner ■

David and Enid Rosenberg/David and Enid
Rosenberg Foundation ●■

Betty Rosskamm ■

Aaron Saltzman ■

Anita Seid ■

Moira and Wulf Utian ■

Blanche K. and Walter L. Wachs
Endowment Fund ■

Mary Saionz Wolf and Charles Wolf
Memorial Endowment Fund ■

\$2,500-\$4,999

Sherri and Marc Blaushild ■

Carol and Scott Burg ■■

Nan Cohen and Daniel Abrams* ■■

Cuyahoga Arts & Culture ■

The Giant Eagle Foundation ■

Rostislav Gutarts and Inga Becker-Gutarts ■

C. Mark Hayes ■

Marie A. Kahne Memorial Fund ■

Klein, Jaffa, and Halpern Family
Philanthropic Fund* ●■

Donald and Judy Jacobson ■

Suellen and Lawrence Kadis ■■

Melvin and Lola Kamins ■■

Pearl and Jack H. Miner Memorial Fund ■

Shari and Michael Perlmutter* ■



*Recommended by these individuals from their donor advised funds of the Jewish Federation of Cleveland.
Of blessed memory. *Matching gift. ● Jewish Federation of Cleveland Supporting Foundation ■ JFSA Cleveland Gift
■ Hebrew Shelter Home Gift ■ PLAN Gift ▲ JFS Akron Gift ■ College Financial Aid Program Gift

\$1,000-\$2,499

Anonymous ■
David and Hedy Adler ■■
Trish and Mark Adler ■■
Sherri Appleton and Marty Resnik ■■
Samuel Bayer ■
Marilyn Bedol ■■■
Robert Bellamy ■
Susan Bichsel and Steve Rusnak ■■▲
Kathy Bigham ■
Gerald and Beatrice Camiener* ■
Rebecca and Irad Carmi ■
Ethan and Gena Cohen ■
Ellen E. & Victor J. Cohn Supporting
Foundation ●■
Bonnie and Michael Cole ■
Congregation Beis Doniel ■
Michael and Nicol Coxon ■
Paula and Daniel Dreyfuss ■■
Natalie Epstein ■
The P&W Evans Charitable Foundation ■

Thomas Gerson* ■
Elisabeth Gevelber* ■
Brian Gingerich and Dulcey Barr ■
Boris and Raisa Gliner ■
Allan and Elise Goldner ■■
Bruce and Lynn Goodman ■
The Lewis M. and Elaine K. Goodman
Scholarship Fund ■
Goodman "Yoda- Newton"
Philanthropic Fund* ■
Steven and Edith Greenberg ■■
Harley and Rochelle Gross* ■
Michael and Abbey Guggenheim ■
Health Quest Foundation ■
Jean Heflich ■■
John and Lori Herman ■
Florence Hersh ■
Michelle and Evan Hirsch* ■▲
Stephen and Amy Hoffman ■
Helen Ingram ■
Alan Jaffa ■

Jewish Community Programs for Women &
Children Fund ■
Richard and Roberta Katzman ■■
Irving and Wally Kaplan ■
Michael Klein ■
Andrew and Joan Kohn ■
Sue Ellen and Jeffrey Korach ■
Bradley and Jennifer Kotler ■
Sherelynn Lehman ■
Teri Levine Memorial Homelessness
Assistance Fund ■
Margaret and Richard Margolis* ■
Sheila and Kevin Margolis ■
The Miller Family Foundation ■
Network for Good ■
Dianne and Herb Newman JFS
"Friends" Fund ▲
Karen and Norton Newborn ■
Matthew Ostrower ■
PathMaster Inc. ■
Wendi and Ervin Pavlofsky ■
Allan and Nancy Pearl ■■
Elisabeth Plax ■
Premier Metal Services ■
Progressive Insurance Foundation*** ■■
Reminger Co., L.P.A ■
Susan and Mark Ringel ■
Fred and Lynn Rosenberg ■
Ronald Rosenfeld ■
Larry and Georgia Rothstein ■
Robert and Margo Roth* ■
Barbara Salsbury ■
David Schultz ■
Michael and Kathy Seider ▲
Henry and Dorothy Seibert ■
Senkfor Family Foundation ■



Recommended by these individuals from their donor advised funds of the Jewish Federation of Cleveland. **Of blessed memory. *Matching gift.*

● Jewish Federation of Cleveland Supporting Foundation ■ JFSA Cleveland Gift ■ Hebrew Shelter Home Gift ■ PLAN Gift ▲ JFS Akron Gift ■ College Financial Aid Program Gift
We make every effort to ensure the accuracy of these lists. Please contact the Development Department with any corrections at 216.504.6451.

Eric Shapiro and Jane Buder Shapiro ■
 David and Penny Strauss ■■
 Terri and Howard Steindler ■■
 Ronna and Kent Talcott ■
 The Up Side of Downs of Northeast Ohio ■
 Gail and Ed Weintraub ■
 Penni and Stephen Weinberg ■
 Cathy and Robert Weiss ■
 John and Linda Wirtshafter ■
 Jonathon Wise and Cheryl Davis ■■
 The Nathan Wisneski Fund ■■
 Leon Wyant ▲
 Matthew and Joanna Wyner ■
 Dara and Alan Yanowitz ■
 Martha Zlotnik ■■

\$500-\$999

Ian and Gloria Abrams ■■
 Louise Abrams and Robert Fuerst ■
 Tracy Backer ■
 Elsa Rosenwasser Berger Memorial
 Family Fund ■
 Lynne and Irv Berliner ■
 Gary and Janice Bilchik ■
 Gary Bigham ■
 Jean Bloomfield* ■
 B'nai Jeshurun Congregation ■
 B'nai Jeshurun Sisterhood ■
 The Castele Family Foundation ■
 Laura Dales ■
 Mary Dobyns ■
 Robert and Darlene Duvins* ■■
 John and Kathy Eyerman ■
 Katie Feldman* ■
 Midori and Claudio Fiocchi ■
 Jeffrey and Jodi Gottlieb ■■

David and Janet Hlavac ■
 Horvitz YouthAbility ■
 Impullitti Landscaping Inc. ■
 Faye Kaplan ■■
 David and Judy Kaufman* ■■
 Fern and Loren Kendis ■
 Ann and David Knight ■
 Rik and Nancy Kohn* ■
 Carla Kun ■
 Karen Krause ■
 Shelah Kutunow ■
 Robert and Elayne Kwait ■■
 Michael Leikin ■
 Leikin Motor Co. ■
 Barry Leven ■
 Martin and Joyce Levin ▲
 Beth and Ronald Levine ■■
 Maureen and Steven MacIntyre ■
 Howard and Sue Maier ■
 Herbert and Cookie Marcus* ■
 Martin and Lois Marcus* ■
 Elizabeth Mease ■
 Claudia Metz ■
 Laura R. & Lucian Q. Moffitt Foundation ▲
 The Park Synagogue ■■
 Kim and Paul Pesses* ■■
 The Albert B. & Audrey G. Ratner Family
 Foundation/Albert and Audrey Ratner ●■
 Sharon and Kevin Robertson ■
 Warner Rosenthal ■
 Florine Rusnak ■
 Aliko and Peter Rzepka ■
 Leslie and David Seiger ■■
 Ilene Shaw ■
 John R. Siff ■



*(left to right) Outgoing JFSA Board
 Chair Harvey Kotler is congratulated by
 immediate past chair Phil Cohen on his
 successful tenure as Board Chair.*

Naomi G. and Edwin Z. Singer
 Family Fund ●■
 Maureen and Barry Sokolov ■
 Jeffrey and Mary Sopko ■
 Richard and Susan Stark ■
 Trudy Stearns ■
 Victor and Marjorie Strimbu ■
 The Temple - Tifereth Israel ■
 Jack and Blanche Valancy* ■
 John and Cynthia Valenti ■
 Phillip and Debbie Weiss ■
 Sally and Stanley Wertheim ■
 Chuck and Randi Wien ■
 Carol Wortzman ■

Recommended by these individuals from their donor advised funds of the Jewish Federation of Cleveland. **Of blessed memory. *Matching gift.*

● Jewish Federation of Cleveland Supporting Foundation ■ JFSA Cleveland Gift ■ Hebrew Shelter Home Gift ■ PLAN Gift ▲ JFS Akron Gift ■ College Financial Aid Program Gift
 We make every effort to ensure the accuracy of these lists. Please contact the Development Department with any corrections at 216.504.6451.

\$250-\$499

Anonymous (3) ■
Hinda and Howard Abramoff ■
Jodi and Joel Adelman ■
Joann and Tom Adler ■
Michael and Brenda Altose ■
Stanley Bernath** ■
Barnett and Carole Bookatz ■
John Burkhart ■
Michele and David Camiener ■
Peter and Rita Carfagna ■



(left to right) When JFS Akron received a generous donation of gently used furniture, staff Alexsa Wanchick, Amanda Altieri, and Ta'Erra Boykin got together to pick-up and transport the furniture to an older adult client who was grateful he had a bed to sleep in.

Leah Weiss Caruso and
Rabbi Joshua Caruso ■
Hillel Chiel and Elizabeth Dreben ■ ■
Cleveland Marathon, Inc. ■
Deborah and Kenneth Cohen ■
Deana Couture ■
Tracy Dickinson ■
Grant and Jennifer Dinner ■
Leslie and John Dunn ■
Debra and Richard Epstein ■
Lawrence and Bonnie Frankel* ■
Elisha and Anna Fredman ■
Forest City Jeans Day ■
Philip and Adrienne Goldberg ■
Jonathan Golden ▲
Daniel and Kathleen Golovan ■
George Goudreau ■
Michael and Nancy Greff ■ ■
Michael and Raquel Haas ■ ■
Stacie and Jeffrey Halpern ■
David and Lynn Heiman* ■
Farrel Helfer ▲
Maggie Hollman ■
Michael and Jane Horvitz* ■
Elise Hurwitz ■
Jane Joseph ■
Junior Ratner Club ■
Gary Kaplan and Roberta Karsh Kaplan* ■
Linda Kelly ■
Bruce Kendrick ■
Stuart and Theresia Kline ■
Taub and Joan Kornblut ■
Donna Kramer ■
Barbara and Ronald Lang ■
Rabbi Alan and Jean Lettovsky* ■
Dr. Linda and Jonathan Lewin ■

Janet Ludwig ■
The Madav IX Donor Advised Fund ■ ■
McCarthy, Lebit, Crystal
& Liffman Co., L.P.A. ■
David Miller ■
Renate and Marvin Miller ■
Mary Ann Minster ▲
Nachama Moskowitz ■
Suzann Moskowitz ■
Esther Moss* ■
Beverly Mushinsky ■
Janisse Nagel and Ken Marblestone ■
Helen and David Nagusky* ■
Stephanie and Nicholas Nebehay-Ulmer ■
Neil and Isabel Parks ■
Elaine Paulett ■
Joel and Sharon Peerless* ■
Heidi and Bernard Perla ■
Michael and Barbara Peterman* ■
Deborah and Scott Picker ■
Jody and Tod Podl* ■
Marc and Carol Pohl ■
Phyllis and Sidney Reisman ■
Rabbi Daniel Roberts and
Elaine Rembrandt ■
Cary and Barbara Root ■
Susan and Steven Rubin ■ ■
Michael Shapiro ■
Mary Ann and Gary Shamis ■
Lawrence and Margaret Singerman* ■
David Sperling ■
Carmen and Andrei Vermont* ■
Jeffrey and Hallie Wasserman ■
Randi Waxman ■ ■
Caryn Wolf Wechsler ■
Ruth Wieder ■

Recommended by these individuals from their donor advised funds of the Jewish Federation of Cleveland. **Of blessed memory. *Matching gift.*

● Jewish Federation of Cleveland Supporting Foundation ■ JFSA Cleveland Gift ■ Hebrew Shelter Home Gift ■ PLAN Gift ▲ JFS Akron Gift ■ College Financial Aid Program Gift
We make every effort to ensure the accuracy of these lists. Please contact the Development Department with any corrections at 216.504.6451.

Keith Weiner ■
 Timothy Williams ■
 Milton and Edith Wiskind
 Designated Fund ▲
 Nancy Wolf and Aric Greenfield ■ ■
 Melanie Young ■
 Donald Zaas ■
 Gerald and Iris** Zahler ■ ■
 Zilber Family Foundation ● ■

\$100-\$249

Anonymous ■ ▲
 Abby and Tom Abelson ■
 Edith Aberte** ▲
 Michael Abrams ■
 Amazon Smile Foundation ■
 Elliot Azoff** ■
 Rhoda Agin ■
 Judith Borodkin Blum ■
 Charles and Sandra Babbush ■
 Brian and Megan Bash ■
 Linda Becker ■
 Susan Berger and Robert Brown ■
 Ron Bildstein ■
 Pamela Blake ■
 Myrna Arlen Bloch and Kurt Bloch ■
 Flora Blumenthal* ■
 Errol and Ellen Brick ■
 Robert and Beth Brandon ■
 Michael Burgin ■
 Wendy Cantor Dobo ■
 Bonita and Arnold Caplan ■
 Linda and Howard Chapman ■
 Elizabeth and Keith Chelm ■
 Florence Chelm* ■
 Renee and Kerry Chelm ■

Eugene and Carol Chlosta ▲
 Barry and Lynn Chesler ■
 Carol Sue and Percy Clark ■
 Elaine and Martin Cohen ▲
 Gilda Cohen ■
 Marc Collin and Rita Cydulka ■
 Compass Family and
 Community Services ■
 Patricia and Stephen Crane ▲
 Jean and John Cregan ■
 Susan and Michael Cristal ■
 Lawrence Coven ■
 Meryl and Larry Dannenberg ■
 Lois J. Davis* ■
 William and Judith Day ■
 Josephine and Pieter deHaseth ■
 Anthony DeMauro ■
 Mary and James Derrick ■
 Gary and Andrea Desberg* ■
 Iona and Richard Dettelbach ■
 Joan Drnek ■
 Arthur and Judith Dunn ■
 Einstein & Burt Co. LLC ■
 Deborah and Alan Erenrich ■
 Alfred and Harriet Fader* ■
 Bennett and Sharon Fagin ■
 Robert and Marcia Fein* ■
 David Fish ▲
 Ronald and LuAnne Fisher ■
 Ronald and Sherrie Fleeter ■
 Dale Flowers ■
 Edward and Honey Friedman ■
 Jane Friedman* ■
 Madeline Friedman and Norman Levin ■
 Avrum and Phyllis Froimson ■
 Ginny and Gadi Galili ■



Bowling is a favorite activity of many residential clients.

GE United Way Campaign ■
 Debbie and Ben George* ■
 Judith Goldman ■
 James Goldsmith and Nancy
 Shaw Goldsmith ■
 Gerald and Sarajane Goldstein ■
 Pearl Goldstein ■
 Gries Family Foundation ● ■
 Elaine Gross ■
 Shari and Michael Goldberg ■

Recommended by these individuals from their donor advised funds of the Jewish Federation of Cleveland. **Of blessed memory. *Matching gift.*

● Jewish Federation of Cleveland Supporting Foundation ■ JFSA Cleveland Gift ■ Hebrew Shelter Home Gift ■ PLAN Gift ▲ JFS Akron Gift ■ College Financial Aid Program Gift
 We make every effort to ensure the accuracy of these lists. Please contact the Development Department with any corrections at 216.504.6451.

Anne Gordon ■
 David Gorsky ■
 Adam and Amalia Haas ■
 Amy Handel ■
 Natalie Haynes ■
 Alan and Diane Herzog ■
 Robert Hexter ■
 Donna and Stanley Hirsch
 Charitable Fund ■
 Hopewell ■
 Christopher Huhnke ■
 Claire Huntington ■
 Susan and Michael Hyman ■
 Donald and Lynda Insul ■
 Jeanne Irvin ■
 J. Harry Isaacson ■
 Gary and Lara Isakov ■
 Sally Isenstadt ■
 Alan and Beverly Israel ■ ■
 Avrum and Francoise Jacobs ■

Jewish War Veterans Ladies
 Auxiliary #44 ■
 William Jones ■
 Randi and Richard Jones ■
 Arline Joseph ■
 Jeffrey Kahn and Karen Horowitz ■
 Terri Katz Kasimov and Gerald Kasimov ■
 Deanna and David* Katz ■
 Shirley Kesselman ■
 Key Bank ■
 Robert Kintsglinger ■
 Merle and Robert Kiwi ■
 Jonathon and Bonnie Klarfeld ■
 Virginia Klaus ■
 Jonathan and Abbie Klein ■
 Kelly and Hank Kornblut ■
 Melissa and Lee Korland ■
 Tere Kruza ■
 Kenneth and Amanda Kurland ■
 Joshua and Chana Kutin ■



(left to right) Achieving Potential Executive Director Debbie Chickering congratulates Forever Children Home Site Manager Victoria Pajestka on her many years overseeing the care of four developmentally disabled adults living in this home.



(left to right) Caring at Home Executive Director Laura Dales enjoys JFSA's Hanukkah party with Holocaust Survivors Joe and Bella Klein.

Christina Landry ■
 Judith Noble Lasher ▲
 Joanna Laytin ■
 Ellyn Lazar ■
 Leona and Melvin Lazar ■
 Kathy and Robert Leb ■
 Sharon and Jamie Lebovitz ■
 Ron Lederman ▲
 Ellyn and Barry Lefko ■ ■
 Aaron and Reva Leizman ■
 Adam and Nancy Levin ■
 Keith and Nancy Libman ■
 Charles Lissauer* ■
 Heather Long ▼
 Jaime Lowy ■
 Luster Gift Boutique LLC ■

Recommended by these individuals from their donor advised funds of the Jewish Federation of Cleveland. **Of blessed memory. *Matching gift.*

● Jewish Federation of Cleveland Supporting Foundation ■ JFSA Cleveland Gift ■ Hebrew Shelter Home Gift ■ PLAN Gift ▲ JFS Akron Gift ■ College Financial Aid Program Gift
 We make every effort to ensure the accuracy of these lists. Please contact the Development Department with any corrections at 216.504.6451.

Bruce and Rita Mandel ■
 Eva Mandula ■
 Gregory & Shelley Milin Marcus* ■
 James and Susan Marder ■■
 Barbara and Dale Markowitz ■
 Peter and Claudia Marmaros ■
 Martha and Patrick McGraw ▼
 Donald and Barbara Meckler ■
 Sarah Mervine ■
 Donald and Sara Messinger ■
 Andrew and Minda Meyer ■
 Jill and Josh Miller ■
 Andrew and Jodi Mirman ▲
 Moreland Management Company ■
 Lois Morris ■
 Karen Leizman Moses and Barry Moses ■■
 Jan Moskowitz ■
 Jeffrey Moss ■
 Thomas and Pamela Murphy ■
 Randall Myeroff ■
 Amy and Larrie Nadler ■
 Marcus Neiman ■
 James Nelson ▲
 Lawrence Novak and Donna Schaaf ■
 Judith and Ronald Neuger ■
 Rabbi Robert Nosanchuk and
 Joanie Berger ■
 Marshall Nurenberg ■
 Kenneth Oif and Marilyn Frankel Oif ■■
 Susan and James O'Neil ■
 Debby and Zach Paris ■
 David Partington and
 Barbara Zaas Partington ■
 Stephen Petras ■
 Rebecca Phillips ■
 Phoenix Steel Services ■

Joanne and Richard Prober ■■
 Larry and Julia Pollock* ■
 Keith and Cynthia Polster* ■
 Phylis and Lawrence Pomerantz ■■
 Clara Rankin ■
 John J. Ready & Associates ■
 Rein Family Foundation ■
 Robert and Sylvia Reitman* ■
 Paula Reshotko ■
 Charles and Sally Rich ■
 Jamie and Jeffrey Rindsberg ■
 Barbara Robinson* ■
 Carol Roenbaugh ■
 Maxine and Charles Rosenbaum ■■
 Charles and Gayle Rosenberg ■
 Frank and Beth Rosenberg* ■
 Jessica Rosenblitt ■
 James** and Ellen Rosenthal ■
 Peter Roth ■
 Max and Beverly Rothal ▲
 Abram Roy LLP ■
 Patty Rubin* ■■
 Erika Rudin-Luria and
 Rabbi Hal Rudin-Luria ■
 Mark Sack* ■
 Bobby and Michael Sacks ▲
 Gordon and Evelyn Safran ■
 John and Patty Saks ▲
 Jerome Savransky ■
 Sheri and Billy Sax ■
 David and Orna Schafer ■
 Harvey and Diane Scholnick ■
 Jay and Sharon Seaton ■
 Eleanor Schwartz ■
 Paula and Walter Schwartz ■
 Rick Schwartz ■

Robert and Sandy Schwartz* ■
 Alan and Elissa Schabes ■
 Daniel Schweid and Carolee Lesyk ■
 Barbara and Michael Shapero ■
 Laura Siegal ■
 Jane and Robert Silverman ■
 Rabbi Joshua Skoff and
 Ilana Hoffer Skoff ■
 Barbara and Steve Somogyi ■
 Doris Sopher ■
 Richard and Barbara Speer ■
 Erica Starrfield ■
 Darby and Jonathan Miller Steiger ■■
 Eleanor Steigman* ■
 James and Edith Stevenson ■
 Rochelle and Robert Stone ▲
 Rebecca Storey ■
 Harvey and Barbara Temkin ■



PLAN member, Brindel Kiner, enjoyed the 30th Annual PLAN Family picnic.

Recommended by these individuals from their donor advised funds of the Jewish Federation of Cleveland. **Of blessed memory. *Matching gift.*

● Jewish Federation of Cleveland Supporting Foundation ■ JFSA Cleveland Gift ■ Hebrew Shelter Home Gift ■ PLAN Gift ▲ JFS Akron Gift ■ College Financial Aid Program Gift
 We make every effort to ensure the accuracy of these lists. Please contact the Development Department with any corrections at 216.504.6451.

Tibors Kosher Meat Market, Inc. ■
 Moshe Torem ▲
 United Way Metropolitan Chicago ■
 United Way of West Central Connecticut ■
 Anthony and Courtney Vengarick ■
 Gregory and Sharon Vranekovic ■
 Jay Wachs ■
 Neil and Joanne Warres ■
 Rachel and Ken Weinberg ■
 Eleanor Weisman ■
 Gary Weiss ■
 Carol and Robert Weitzner ■
 Marcia Wexberg and Kenneth Singer ■
 Farris and Kathleen White ■
 Charles and Joan Whitehill ■
 James and Eileen Wilkoff ■
 David and Carol Willen ■
 Judy and Steven Willensky* ■
 Edward Wortzman ■
 John and Sylvia Yankey ■



JFSA Staff wear purple to raise awareness of Alzheimer's Disease on the Longest Day of the Year event.

Richard and Debbie Zelin ▲
 Lisa and Rob Zimmerman ■
 Marc Zweben ■

Debbie Chickering ■
 Gregory and Margaret Couch ■
 Vickie Crafa ■
 Robyn Daniel ■
 Stephanie and Jeffrey Danzinger ■
 Elizabeth Dasilva ■
 Patti Dery ■
 Eaton Corporation ■
 Marcia and Monroe Elbrand ■
 Traci Felder ■
 Dennis and Marcy Fisher ■
 Jonathan Forman ■
 Joel and Mary Fried ■
 Harriet Friedman ■
 Jay and Hope Fromson ■
 Deitra Gaddis ■
 Toby Geduld ■■
 Yuriko Gilbertson ■
 Kenneth Ginsburg ▲

\$50-\$99

Anonymous (6) ■
 Amie Albert ■
 Robin Avery and Michael Lauer ■
 Carolyn and James Bankhurst ■
 Melissa Barrett ■
 Harry and Penny Beer ■
 Nancy and Jaye Benjamin ■
 Richard and Sharon Berger ■
 Stuart and Lora Berkowitz ■
 Lawrence Bole and Anita Vento ■
 Stanley and Barbara Brown ■
 Phil Canuto ■
 Rebecca Chesler ■



Reghina Adler, of blessed memory, a Holocaust Survivor, loved every JFSA Hanukkah party and social activities.

Recommended by these individuals from their donor advised funds of the Jewish Federation of Cleveland. **Of blessed memory. *Matching gift.*

● Jewish Federation of Cleveland Supporting Foundation ■ JFSA Cleveland Gift ■ Hebrew Shelter Home Gift ■ PLAN Gift ▲ JFS Akron Gift ■ College Financial Aid Program Gift
 We make every effort to ensure the accuracy of these lists. Please contact the Development Department with any corrections at 216.504.6451.

David Glaser ■
 Hollie Goldberg ■
 Howard and Suri Goldman ■
 Leona Green ■
 Anna Greenfield ■
 Amy and Howard Groedel ■
 Jennifer Grossman ■
 Binnie Gun and Brian Eisenberg ■
 Homer and Lois Guren ■
 Dori and Blair Haas ■
 Shirley and Steve Hairston ■
 Melvin Halberstadt ■
 Alan and Judith Hart ▲
 Karen Heavrin ■
 Jodie Herbst ■
 Paula and Daniel Herman ■■
 Bonnie Hershey ■
 Judy and Dennis Hershey ■
 Sanford and Frances Herskovitz ■
 Daniel Jaffe and Beth Hellerstein ■
 Miriam Hoffman ■
 Victoria and Paul Isenstadt ■
 Melissa and Adam Jacobs ■
 Suzanne Jones ■
 Sheldon and Judith Kaffen ■
 Karen Karp ■
 Bonnie Jean Kennedy ■
 Kate Kenny ■
 Ernest and Marcia Kline ■
 Leo Knight ■
 Theodore Kodish ▲
 Evan Kominsky ■
 Caryn and Ben Kovar ■
 Sidney and Frances Lasky ■
 Ariella Rose Levine Foundation ■

Grace Lin ■
 Carol and Stephen Loverde ■
 Gary and Harriet Mann ■
 Joseph and Janette Mannarino ■
 Nata Mendlovic ■
 Kelly and David Millet ■
 Gary and Karen Mitrisin ■
 Ted Moore ■
 Jeffrey and Glorina Morris ■
 Betty Pitcher ■
 Heddy and Leonard Rabe ■
 Susan and Barry Reis ■
 Ronald Rossi ■
 Boris Rozenfeld ■
 Alice Ruffin ■
 Cindy and John Saddle ■
 Fredell Schnee ■
 Jack and Phyllis Schubert ■
 Harry Schuster ■
 Iris Seydel ■
 Maude and Melvin Shafron ■■
 Stanley and Janice Sheftel ▲
 Deanne and Norman Siegal ■
 Alan and Michelle Sills ■
 Bart and Sherry Simon ■
 Aletta and Clive Sinoff ■
 Diane Smilanick and Mark Greenfield ■
 Amy and Brad Solomon ■
 Douglas and Ginny Solomon ■
 Cynthia Teper Soloway ■
 Dennis and Raycine Spector ■
 Karen and Keith Spero ■
 Adrienne and Ronald Stanley ■
 Suburban Temple-Kol Ami ■
 Pam and Harry Tepper ■



Marilyn Marotto is proud to show off her pumpkin decorating skills.

Stanley and Marianne Tepper ■
 Leah Terkel ■
 Trident United Way ■
 Beverley and Richard Uria ■
 Amy Wagner ■
 Louise and Greg Warner ■
 Ellen and Steven Weingart ■
 Susan Weingold ■
 Alberta White Seawood ■
 M. Cory Zucker ■

Recommended by these individuals from their donor advised funds of the Jewish Federation of Cleveland. **Of blessed memory. *Matching gift.*

● Jewish Federation of Cleveland Supporting Foundation ■ JFSA Cleveland Gift ■ Hebrew Shelter Home Gift ■ PLAN Gift ▲ JFS Akron Gift ■ College Financial Aid Program Gift
 We make every effort to ensure the accuracy of these lists. Please contact the Development Department with any corrections at 216.504.6451.

Up to \$49

Anonymous (7) ■ ▲ ■
Diane Adams ■
Stephen Adu ■
Barbara Aller ▲
Nadine Andrews ■
Lee Apple ■
Stephani Apple ■
Beatrice and Larry Axelrod ■
Steven Berger ■
Noreen Bertman ■
Elaine Bolasny ■
Joyce and Barry Brown ■
Leslie Brown ■
Avery** and Susannah Cohen ■
Robin and Lawrence Collins ■
Catherine Connell ■
Serena Cox ■
Barbara and Lee Appel ■ ■
Trish and Gari Anderson ■
Baker & Company ■
BeautyKind Foundation ■
Jack and Zina Becker ■
Roni and Elliot Berenson ■
Brad Berger ■
Ellen Bergman ■
Frances Berman ■
Tali Best ■
Brea and Stephen Black ■
Michael and Sylvia Blain ■
Alice Block ■
Ervin and Beata Boja ■
Peter and Tamar Brosse ■
Roy Buchinsky and
Lynn Kamenir Buchinsky ■
David and Avril Burg ■

Janice and Marty Bursky ■
Dana Calloway ■
Martin and Carolann Cohen ■
Theodore and Vicky Cohn ■
Sybla Cooper ■
Keren Copeland ■
Tobi and Gil Cordova ■
David Cunix ■
Priscilla and Scott Dann ■
Eric Dannenberg ■
Eugene Davidovits ■
Judy Davidson ■



(left to right) JFSA's Mae Bennett and Jen Slattery partnered with Bilyana Simonoski of Tough As Milk to educate professionals on using yoga as a treatment for trauma victims.

Jay and Jane Davis ■
Ann Marie Drasler ■
Hayley and Larry Dubin ■
Pamela Duncan ■
Louis and Edith Einstein Trust ■
Gerald and Shulamith Erenberg ■
Carmen Ettinger ■
Chaim Evan and Esther Goodman ■
Lioussia Eydelkop ■
Charles Feinberg ■
Eric and Amy Fingerhut ■
James Finnerty ■
George and Bela Fischer ■
Nina Frankel ■
Michael and Julie Frayman ■
Jacqueline Freedman ■ ■
Michelle and Stephen Freireich ■
Barbara and Friedman ■
Marci Friedman ■
Mark Frisch ■
Naum Gershenson ■
Janet Gerstein ■
Lori Gibson ■
Louise and Jerry Gips ■
Erika Gold ■
Gary N. Goldberg ■
Michael and Beverly Goldie ■
Meredith Goldstein ■
Bruce Gottlieb ■
Sydell and Armin Green ■
Rebecca Griffith ■
Elizabeth Hall ■
Moshe and Sydney Harris ■
Quasina Harris ■
Vivian Hatcher ■
Edith Hirsch ■

Recommended by these individuals from their donor advised funds of the Jewish Federation of Cleveland. **Of blessed memory. *Matching gift.*

● Jewish Federation of Cleveland Supporting Foundation ■ JFSA Cleveland Gift ■ Hebrew Shelter Home Gift ■ PLAN Gift ▲ JFS Akron Gift ■ College Financial Aid Program Gift
We make every effort to ensure the accuracy of these lists. Please contact the Development Department with any corrections at 216.504.6451.

Jori Holloway ■
 Leslie and Mark Holz ■
 Zhahay Horses ■
 Jacqueline and Jon Houser ■
 Florence and Joseph Hrusch ■
 Louis and Beth Innenberg ■
 Edith Isaacs ■
 Dennis and Helen Israelstam ■
 Brian Jasper ■
 Jawanna Jones ■
 Shelby Johnson ■
 Cheryl Joseph ■
 Steve Kammer ■
 Mickey Katz ■
 Bob and Iny Kelso ■
 Zhanna Khalafyan ■
 Howard Kimmel ■
 Ronald and Sharon Kiner ■
 Judith Kirchick** ■
 Robert Klaus ■
 Sylvia Knell ■
 Margaret Kochevar ■
 Alan and Sue Kopit ■
 Marcia Kritzler ■
 Joanne Laidman ■
 Hallee Landsman ■
 So Lang ■
 Brenda Lawson ■
 Jacob and Elaine Lebowitz ■
 Marlene Lefton ■
 Joy Leventhal ■
 Karen and Ira Levinsky ■
 Amy and Keith Levy ■
 Irving Lewis ■
 Susan Lieberman ■
 Philip and Lisa Linden ■



Rabbi Scott Roland leads the Passover Seder hosted for JFSA clients by volunteers from Congregation Shaarey Tikvah.

Elizabeth Longenecker ■
 Lauren Loomis ■
 Sharon Lucas ■
 Sandra Lusher-Waterhouse and
 Bruce Waterhouse ■
 Joli Magnus ■
 Svetlana Makhsimova ■
 Sue and Howard Maier ■
 Marina and Michael Markovich ■
 Daniel Markson ■
 Jeanne and Mark Mattern ■
 Douglas and Ruth Mayers ■
 C.L. Meeson ■
 S. Joshua Mendel ■
 Sherrie and Yisrael Mendenhall ■

Menorah Park Center for Senior Living ■
 Zeeba and David Mercer ■
 Jennifer Mesko-Kimmich ■
 Marla Mesnick ■
 Michael and Hedy Milgrom ■
 Dennis and Florence Mitchell ■
 Joseph Mondello ■
 Jason Moses ■
 Sheilah Moshogianes ■
 Sunny Moss ■
 Leo Mylan ■
 Muriel and David Nachman ■
 Rachel Wayne Nelson ■
 Elianora Nemirovskiy ■
 Janet Newman ■

Recommended by these individuals from their donor advised funds of the Jewish Federation of Cleveland. **Of blessed memory. *Matching gift.*

● Jewish Federation of Cleveland Supporting Foundation ■ JFSA Cleveland Gift ■ Hebrew Shelter Home Gift ■ PLAN Gift ▲ JFS Akron Gift ■ College Financial Aid Program Gift
 We make every effort to ensure the accuracy of these lists. Please contact the Development Department with any corrections at 216.504.6451.

Victoria Pajestka ■
 Cassandra Parks ■
 Roderick Parks ■
 PayPal Giving Fund ■
 Nadav Pecha ■
 Wendy Pepera ■
 Erica Perkins ■
 Sharyl Pickering ■
 Ann Joy and Jeffrey Pickholtz ■
 Heather Pitts ■
 Eva Polien ■
 Beverly Pollack ■
 Daniel Polster ■
 Darlena Portnick ■
 Alla Pustelnik ■
 Andrea Putnam ■
 David Rabinsky ■
 Buffy Ramos ▲
 Richard and Charlene Ratner ■
 David Resnik ■
 Francie Rich** ■
 Stephen Richman ■
 Richard and Joan Rivitz ■
 Merrill and Sharon Roback ■
 Beth Robbins ■
 Sandy and Bobbi Robbins ■
 Leonard Robuck** ■
 James Rose ■
 Anita Rosenbaum ■
 Philip and Toby Rosenberg ■
 Phyllis Rotman ■
 Diane Roth ■
 Jordan and Arleen Rothkopf ■
 Kelly and Gilon Rubanenko ■
 Sue Rubin ■
 Theodore and Lynne Rudolph ■

John Safar ■
 Gerald and Hermina Saidel ■
 Joseph Salzman ▲
 Isabel Sanchez-Cummings ■
 Rebecca Sattin ■
 Herbert and Retha Schabes ■
 Suzanne and Marvin Schaefer ■
 Donald and Judith Schermer ■
 Mark and Shelley Schloss ■
 Cathy Schreiber ■
 Mike and Deborah Schultz ■
 Kacie and Greg Schwartz ■
 Daniel Seiger ■
 Sherise Semall ■
 Michael A. Shore ■
 Ruth Silon ▲
 Harlan and Sally Simon ■
 Jill Smialek ■
 Lester and Flora Smith ■
 Irina Sobornitskaya ■
 Heidi and Rick Solomon ■
 Deborah Squires-Goeble ■
 Marcia Stone ■
 Susan Stone ■
 Elizabeth and Joshua Sunshine ■
 Allan and Tanita Taub ■
 Magda Taub ■
 Judith Thompson ■
 Sanford and Beth Timen ■
 Karen Tindel ■
 Richard Tomsick ■
 Toby Trevis ■
 Gale and Mort Tucker ■
 United Way of Greater Milwaukee ■
 Charles Varkala ■
 Jonathan Vickery ■

Tatyana Voyekova ■
 Sally Wagner ■
 Eric and Joyce Wald ■
 Mary Beth Walden ■
 Marie Walzer ■
 Gail Wetzel ■
 Marian Wetzel ■
 Max Wexler ■
 Michael and Miki Wieder ■
 William and Barbara Wieder ■
 Kimberly Williams-Jamison ■
 LeJuanya Williams ■
 Lisa Zeidman ■
 A. Paul Zeitzew ■
 Burton and Sandra Zucker ■



JFS of Akron volunteers and staff delivered Passover baskets to older adults to help them celebrate the holiday and enjoy a friendly visit.

Recommended by these individuals from their donor advised funds of the Jewish Federation of Cleveland. **Of blessed memory. *Matching gift.*

● Jewish Federation of Cleveland Supporting Foundation ■ JFSA Cleveland Gift ■ Hebrew Shelter Home Gift ■ PLAN Gift ▲ JFS Akron Gift ■ College Financial Aid Program Gift
 We make every effort to ensure the accuracy of these lists. Please contact the Development Department with any corrections at 216.504.6451.

IN-KIND DONORS

INDIVIDUALS

Barb Ackerman
Bill Amato
Patti and Jonathan Berns
Nancy Bernstein
Robert and Eileen Blattner
David and Robyn Blond
Harold and Marlene Blumenthal
Andrea Canowitz
Bonita and Arnold Caplan
Andrew and Lucy Chess
Lynne Marcus Cohen and Philip Cohen
Arielle and Jeffrey Cohen
George Cohn
Risa Dunn
Sonia Engelman
Robert Englander
Ann Epstein
Heather Farkas
Christine Frankel
Sue Frankel
Rini Garber
Girl Scout Troup 50049
Gerilyn Gleason
Dr. Philip Goldberg
Sidney Good
Gwendolyn Graves
Rabia Hill
Claire Huntington
Jeffrey Kahn
Marla Kassoff
Georgia Lamont
Elana Litvak

Amy Luzar
Tammi Minoski
Rose Mohr, MD
Shari and Michael Perlmutter
Elisabeth Plax
Brandon Potter
John and Amy Pregulman
Laura Pritchard
Dr. David Rosenberg
David and Enid Rosenberg
Helen Samuels
Leslie and David Seiger
Dr. Michael Singerman
Allison Solomon
Shani and Scott Spiegle
Judith Waxman
Karen Weiss
Stephen Werber
Robert Zeiger
Daniel and Ellen Zelman

ORGANIZATIONS

Anshe Chesed Fairmount Temple
Beetanicals LLC
B'nai Jeshurun Congregation
Brahms, Cohn & Leb Orthopedics
Cleveland Jewish News
Cleveland Joseph Project
Community Quilters
Congregation Shaarey Tikvah
Gross Schechter Day School
Hahn Loeser & Parks LLP
JACK Cleveland Casino



Jewish Federation of Cleveland
Jewish Relief Society
Lucious Verde Cards Inc.
Mandel Jewish Community Center
Mandel Jewish Day School
Montefiore
Parkwood LLC
Snow Brothers Appliances
Solon Jewish Preschool
Suburban Temple-Kol Ami
Temple Israel Ner Tamid
Temple Emanu El
The Foresight Group
The Park Synagogue
The Temple - Tifereth Israel
Unionline Shuttle Services
Wortzman & Gingerich Company
X-S Merchandise, Inc.

JFSA ADVISORY COMMITTEE COMMUNITY MEMBERS

Luisa Aviv	Jean Heflich	Paula Seger
Elliot Azoff**	Karen Hess	Maude Shafron
Jules Belkin	Ari Jaffe	Mel Shafron
Rabbi Moshe Berger	Eva Kahana	Janet Shapiro
Janice Bilchik	Jeffrey Kahn	Anita Siegel
Judy Blum	Sue Ellen Korach	Mendel Singer
Harlan Brick	Ron Lederman	Marty Spector
Sandra Buzney	Kristin Leuchtag	Susan Spector
Michael Byun	Beth Levine	Todd Stein
Rosemary Creeden	Judy Lipton	Myra Stone
Grant Dinner	Elena Lougovskaia	Kathy Tomaro
Joan Drnek	Jodi Mirman	Cathy Weiss
Dr. Steven Eppell	Louise Morris	Judy Weiss
David Fish	Dianne Newman	Joseph White
Ann Garson	Meghan Newman	Idelle Wolf
Michelle Gillcrist	Elliot Posner	Edward Wortzman
Ruth Gillett	Amy Rothenfeld	John York
Erika Gold	Brian Rosenfelt	Neil Young
Penny Greenberger	Marv Schwartz	Marilyn Zaas
Inga Gutarts	Daniel Schweid	** of blessed memory



JFSA's Director of Operations Jeff Morris (with Karen Moses) was recognized at the 2018 Annual Meeting on the occasion of the Hebrew Shelter Home's 10th Anniversary in their new home.



Sheri Sax, Grants Officer, (left) receives the William Wortzman Professional Achievement Award from Bill Wortzman.



JFSA Life Director Harvey Kotler (left) congratulates Veronica Perkins, Site Manager, for receiving the Bernie Arshenovitz Service Award.

JFSA VOLUNTEERS

INDIVIDUALS

Yeong-ran Ahn
Cynthia Aizen
Lynn Algeri
Rachel Arnoplin
Sanford Asnien
Aaron Baker
Stanley Bernath**
Jill Bernon
Nancy Bernstein
Judy Blum
Charlotte Blumrosen
Marianne Bregar
Maya Brown
Arianna Bryant
Amy Byrne
Anneke Carlo
Sandra Carrel
Linda Chapman
Bruce Chelnick
Ellen Chernikoff
Alexandra Clay
Shannon Coates
Gail Cohen
Janice Cohen
Kim Collins
Jonathan Cook
Adam Diamond
Richard Diamond
Joanne Dobies
Ed Dunagan
Billie Erickson
Baylee Evans
Yael Farkas
Mad Farnham
Blanche Forman
Rachel Fredericksen
Harriet Friedman

Annette Friedson
Tom Fuerst
Marci Garson
Rowan Gingerich
Erika Gold
Morgan Green
Stacey Ann Grossman
Catherine Hirchak
Sharon Hirsh
Codi Holstein
Leslie Holz
Louis Innenberg
Lois Jacobson
Jane Jasper
Victoria Kalina
Kramer Kamp
Jessica Kang
Marie Kaufman
Fern Kendis
Kristin Klatka
Marjory Klein
Dolores Kleinman
Patiola Klingshirn
Margaret Kochevar
Roger Kramer
Cheryl Kretch
Carla Kun
Melanie Kutnick
Barry Leven
Nancy Lipko
Beverly Lloyd
Madeleine Lochan
Emily Ludwig
Daniel Makoroff
Alison Mally
Sarah Marek
Angela Markowitz
Jessica McDonough

Paul Moiseye
Patti Morgenstern-
Clarren
Jill Morris-Boardman
Connor Mortimer
Ellen Moss
Amy Murphy
Melissa Neides
Judson Nimrick
Melissa Noel
Cindy Oakley
Alex Ockerse
Wendi Pavlofsky
Sharon Peerless
Elizabeth Pham
Deborah Picker
Burton Randell
Susan Reisman
Mariana Riley
Jazmine Robinson
Brandon Rock
Robert Rosen
Jenny Rosenberg
Raquel Rosenberg
Rachel Rosinski
Merle Ross
Patty Rubin
Nicole Russo
Sharon Samuels
Elissa Schabes
Linda Schlein
Nate Schneider
Mike Schultz
Minna Schwartz
Dana Severin
Maude Shafron
Jennifer Shearer
Cheryl Siegel



(Left to right) JFSA volunteers Lisa Schabes, Cheryl Isaacson and Dan Makoroff deliver kosher meals to older adults twice a week.

John Siff
Brooke Singer
Aletta Sinoff
Norma Smith
Maureen Sokolov
A.J. Solomon
Bradley Solomon
Howard Sperber
Trudy Stearns
Michelle Stern
Todd Stern
Lewis Sternberg
Louise Sternberg
Dana Stratz
Margie Strimbu
Donna Sulzer
Jeanne Sydenstricker
Hannah Szabo
Tibor Szabo
Kristie Szymanski
Nardine Taleb
Michael Tam
Caleb Thibeault
Leonard Tracht
Ian Tsun
Jason Tucker
Mason Uemura

Adrienne Wasserman
Melvin Wasserman
Earl Weiss
Marilyn Weiss
Stephanie Wieder
Ronald Wiesenthal
Chelsea Williams
Marilyn Zaas

ORGANIZATIONS

Congregation Shaarey
Tikvah
Gross Schechter
Middle School
Mandel JDS Student
Council
National Council of
Jewish Women –
Cleveland Section
Park Synagogue
Operation Isaiah
Temple Israel Ner Tamid
The Temple-Tifereth
Israel Women's
Association
Horvitz YouthAbility
Ambassadors

JFSA BOARD OF DIRECTORS

OFFICERS

Dan Zelman,* *Board Chair*
David Rosenberg MD,* *Vice Chair*
Michael Weiner,* *Vice Chair*
Michael Klein,* *Treasurer*
Dara Yanowitz,* *Secretary*
Michael Guggenheim,* *Assistant Treasurer*
Susan Bichsel, PhD,* *President and CEO*



(Left to right) Newly installed Board Chair Dan Zelman receives the gavel from Harvey Kotler, outgoing chair.

DIRECTORS

Trish Adler
Gary Bilchik
Carol Burg, MD
Ethan Cohen*
Bonnie Cole
Sandor Ginsburg
Boris Gliner, MD
Sandra Goldman
Allan Goldner
Richard Halle
G. Kent Hayes
John Herman*
Michelle Hirsch*
Suellen Kadis*
Sherelynn Lehman
Daniel Messeloff
Patricia Mintz*
Wendi Pavlofsky
Allan Pearl
Heidi Perla
Shari Perlmutter*
Kevin Robertson
Larry Rothstein
Robert Schwartz, MD
Eric Shapiro, MD
Terri Steindler
Eric Synenberg
Sally Wagner
John Wirtshafter*
Jonathon Wise*
Richard Zelin

LIFE DIRECTORS

Marilyn Bedol, *Special Advisor**
Eileen Blattner, *Special Advisor**
Robert Blattner*
Cynthia Bruml*
Philip Cohen, *At Large**
Chicky Drost**
David Goldberg
Sally Good
Sid Good, *Special Advisor**
Herbert Goulder
Alvin Gray
Robert Immerman
Donald Jacobson
Dolores Kleinman*
Andrew Kohn*
Harvey Kotler, *Immediate Past Chair**
Marvin Lader
Arthur Mayers
Chuck Mintz
Karen B. Newborn
Michael Peterman
Charles Rosenberg
James Spira
Myrna Spira
Eleanor Steigman
David Strauss
Will Sukenik
Phillip Wasserstrom
Sally Wertheim, PhD
William Wertzman, *At Large**

*Member of Executive Committee
**Of Blessed Memory

JFSA MANAGEMENT TEAM

Susan Bichsel, PhD
President and Chief Executive Officer

David Hlavac, MBA
Vice President & Chief Financial Officer

Robert Bologa, MBA
Senior Director, Human Resources

Debbie Chickering, MBA
*Executive Director, Achieving Potential for
Individuals with Disabilities*

Laura Dales, MBA
Executive Director, Caring at Home

Ginny Galili, MSSA
Executive Director, Strengthening Families

Jaime Lowy
Associate Director, Caring at Home

Angela Markowitz
Executive Assistant to the CEO and CFO

Nata Mendlovic, MBA MT (ASCP)
*Chief Operating Officer, Alyson's Place Medical Clinic at
MetroHealth*

Zeeba Mercer, MBA
Chief Executive Officer, Center for Cognition and Recovery, LLC

Jeff Morris
Director, Operations

Karen Leizman Moses, Esq.
Major Gifts Officer

William Bode
Controller, Director of Finance

Thierry Riek, MBA
Senior Director, Planning and Performance

Anne Rosenberg
Vice President, Marketing and Development

Jessica Rosenblitt, JD
Manager, College Financial Aid Program

Michael Schultz, MS
Director, Information Management

Karen Tindel, MBA
Director, Revenue Cycle Management

Timothy Williams
Vice President and Chief Information Officer



(Left to right) JFSA's Jazzmin Mitchell and Ahuva Taub celebrate the new year together at a special party for clients.

JFSA PROGRAMS AND SERVICES

JFSA ACHIEVING POTENTIAL for Individuals with Disabilities

Solutions to help people with mental illness and developmental disabilities achieve their potential through greater independence and inclusion.

Intellectual/Developmental Disability Services

- Housing and Residential Services
- Adult Day Support

Mental Health, Intellectual/Developmental Disability, Other Cognitive Disability Services

- Counseling and Psychiatry
- Cognitive Enhancement Therapy (CET)
- Art Therapy
- Case Management
- Social Recreation and Wellness
- Vocational and Employment Services
- The Fine Family Advocacy and Support Services
- Pooled Disability Trust
- Representative Payee/Bill Paying
- Transitions

PLAN of Northeast Ohio

- Family Advocacy
- Marvin and Carol Lader Journeys Program
- Lifetime Planning
- Office Volunteer Program
- Peer Employment
- Social Activities

JFSA CARING AT HOME

Solutions for seniors and other adults to manage their independence and live healthier lives.

- Skilled Services and Private Duty Care
- Physical, Occupational and Speech Therapy
- Home Cleaning Services
- Philips Lifeline™
- Personal Assistance
- Kosher Home-Delivered Meals
- Holocaust Survivor Support Services
- Geriatric Case Management and Counseling
- JFSA Shuttle on the Go! Transportation

JFSA STRENGTHENING FAMILIES

Solutions to achieve self-sufficiency in the face of financial crisis, homelessness, or domestic abuse.

Financial Support

- Temporary Financial Assistance
- Forward Focus Financial Literacy and Homelessness Prevention

Domestic Violence Services

- Case Management and Safety Planning
- Individual Counseling
- Journey to Empowerment Support Groups
- Justice System Advocacy and Legal Resources
- Special Population Outreach
- Community Education and Professional Training

Hebrew Shelter Home

- Temporary shelter for women and children

JFSA EMPOWERING YOUTH

Solutions to strengthen the role teens and young adults play in our community.

- College Financial Aid Program
- **KNOW ABUSE™** Teen Dating Violence Prevention
- Summer Campership
- Horvitz YouthAbility Program

ADDITIONAL PROGRAMS

Alyson's Place Medical Clinic

- Primary Care*
- Psychiatry
- Geriatric Medical Assessment
- Ophthalmology
- Dental Services**
- Podiatry Services
- Health Education

**provided through MetroHealth System.*

***provided by CWRU School of Dental Medicine.*

Alzheimer's Disease and Dementia Caregiver Support Program

Solutions to support family caregivers to individuals with Alzheimer's disease or dementia.

- Care Coordination
- Savvy Caregiver Training
- Respite Support

Center for Cognition and Recovery, LLC.

National provider of CETCLEVELAND® programming & training

Jewish Family Service of Akron

Solutions for individuals and families living in the Greater Akron area.

jfsa-cleveland.org | 216.292.3999





2019 Annual Report

Non-profit Org.
U.S. Postage
PAID
Cleveland, OH
Permit No. 77

Jewish Family Service Association
of Cleveland
29125 Chagrin Blvd
Pepper Pike, Ohio 44122

FUNDING: Social services for Jewish Nazi victims have been supported by a grant from the Conference on Jewish Material Claims Against Germany. Additional support provided by the URO Charitable Trust. The Harry and Jeanette Weinberg Fund Holocaust Survivor Emergency Fund administered by the Conference on Material Claims Against Germany for the benefit of needy Jewish victims.

Funding for JFSA Alzheimer's Disease & Dementia Caregiver Support Program is made possible by the Jewish Federation of Cleveland and the US Department of Health and Human Services. This project was supported, in part by grant number 90ADPI0019-01-00, from the U.S. Administration for Community Living, Department of Health and Human Services, Washington, DC 20201. Grantees undertaking projects under government sponsorship are encouraged to express freely their findings and conclusions. Points of view or opinions do not, therefore, necessarily represent official Administration for Community Living policy.

MEMBER: Greater Cleveland Security Council, Jewish Federation of Cleveland, Jewish Women International, National Alliance on Mental Illness (NAMI Ohio), National Association of Jewish Human Service Agencies, National Coalition Against Domestic Violence, Ohio Council of Behavioral Healthcare Providers, Ohio Council for Homecare, Ohio Domestic Violence Network, Ohio Providers Resource Association, Shalom Task Force, United Way Services of Greater Cleveland.

CERTIFIED: Medicare and Medicaid, Ohio Department of Mental Health and Addiction Services, Department of Developmental Disabilities.

LICENSED: Ohio Department of Mental Health and Addiction Services, Opportunities for Ohioans with Disabilities (OOD).

ACCREDITED: Commission on Accreditation of Rehabilitation Facilities (CARF).

CONTRACT AGENCY: Alcohol, Drug Addiction and Mental Health Services Board of Cuyahoga County, Conference of Jewish Material Claims Against Germany, Cuyahoga County Board of Developmental Disabilities, Cuyahoga County Department of Human Services, Geauga County Board of Developmental Disabilities, Jewish Federations of North America, Ohio Department of Job and Family Services, Ohio Direction for PASSPORT in Summit County, PASSPORT, Philips Lifeline, Summit County Board of Developmental Disabilities, US Department of Health and Human Services. Western Reserve Area Agency on Aging (WRAAA).

