



**WE ARE JFSA.
STRENGTHENING FAMILIES.
BUILDING COMMUNITY.**



OUR MISSION

Jewish Family Service Association of Cleveland, a private, non-profit organization, serves to strengthen families and individuals in both the Jewish and general communities in Northeast Ohio. Guided by traditional Jewish values of communal responsibility and social justice, JFSA is committed to enhancing every individual's ability to thrive in our community.

WE ARE JFSA.

STRENGTHENING FAMILIES.

BUILDING COMMUNITY.



Robert A. Immerman



Susan Bichsel, PhD

LETTER FROM THE BOARD CHAIR AND PRESIDENT & CEO

Dear Friends,

As you take a moment to read the profiles in this year's annual report, we are confident you will be impressed by the scope and breadth of the services at JFSA. For 137 years, JFSA staff have developed and adapted our services to meet the critical needs of the moment.

2012 has been a banner year for special recognition of JFSA programs. Of note, the Horvitz YouthAbility program was recognized by the City of Cleveland and the AJFCA (Association of Jewish Family & Children Agencies) for its innovative approach to volunteerism with at-risk youth and youth with disabilities. JFSA's Know Abuse™ program was recognized by the AJFCA and the Ohio Association of Non-Profit Organizations for its creative use of cause theater in teen dating violence prevention programming.

Additionally, the Center for Cognition and Recovery was one of seven national organizations to receive the prestigious 2011 Science and Service Award from SAMSHA (Substance Abuse and Mental Health Services Administration).

Volunteers are the wonderful bridge between our programs and services and the community. Each year JFSA volunteers provide roughly \$320,000 worth of unpaid services that enhance the care received by our clients. Our volunteers deliver kosher meals and spend time with our homebound elderly; provide special holiday celebrations for our homeless clients and individuals with disabilities, and ensure that our food pantry is well stocked with much needed items.

While our staff provides safety and access to the best care for our clients, our volunteers add special attention and companionship throughout the year that make JFSA feel like family to the people we serve.

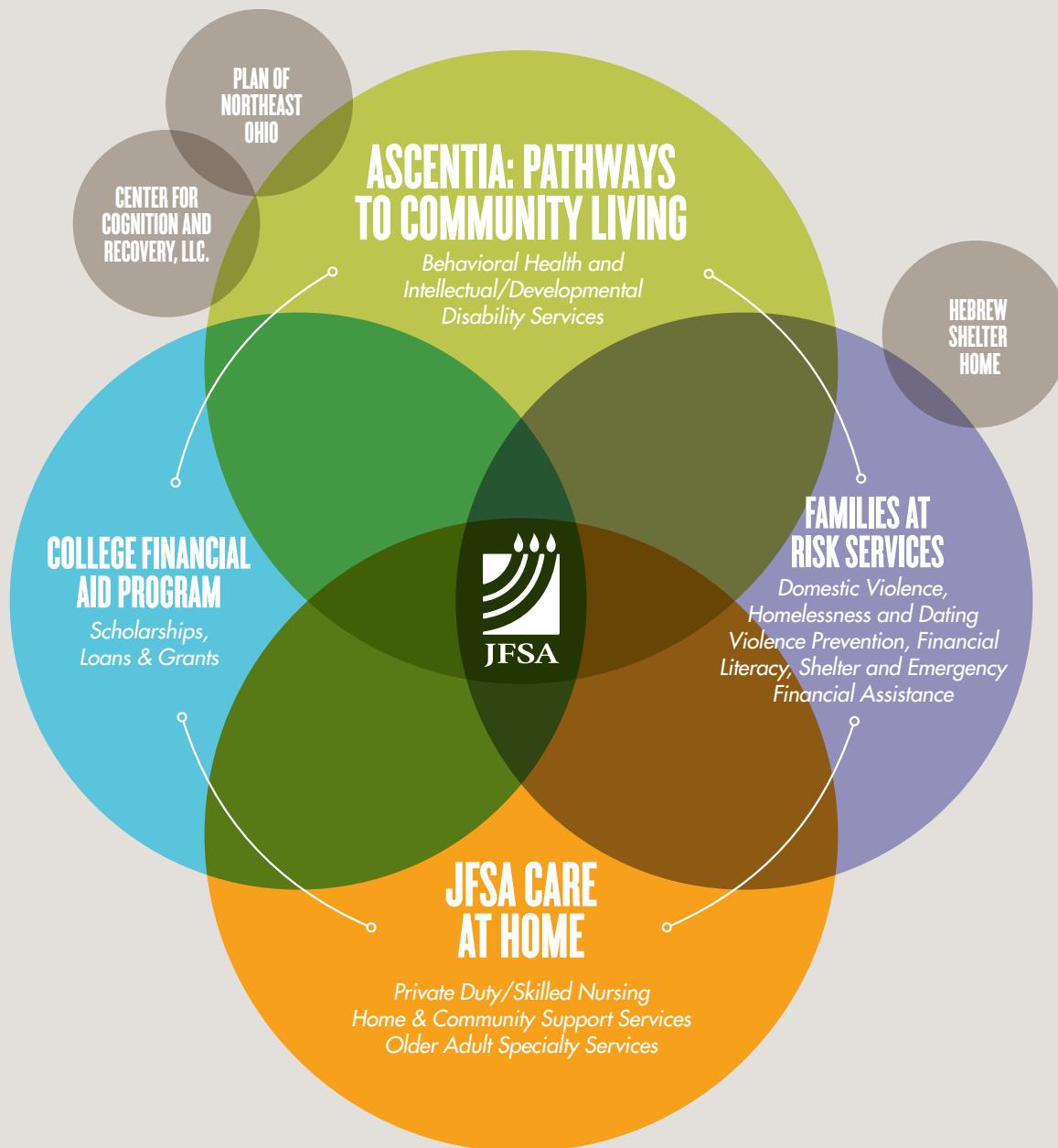
These accomplishments would not be possible without the generous support and extraordinary partnership with the Jewish Federation of Cleveland, our Board of Directors, donors, volunteers and the community at large. Together we ensure that each member of our community can count on JFSA to provide quality care and support.

Robert A. Immerman
Board Chair

Susan Bichsel, PhD
President and CEO

TABLE OF CONTENTS

Letter from the Board Chair and President & CEO.....	1
Profiles.....	3
Agency Financials & Leadership.....	12
Endowments, Foundations & Grantors.....	15
JFSA Donors.....	19
Hebrew Shelter Home Donors.....	32
PLAN Donors.....	35
In-Kind Donors.....	36
Volunteers.....	38
Program & Service Listing.....	40



WE ARE JFSA. STRENGTHENING FAMILIES. BUILDING COMMUNITY.

MAINTAINING A JOB WHILE MANAGING A MENTAL ILLNESS

When Carey Daws lost her job in 2011, she knew exactly where to go for help. Carey chose JFSA Ascentia Supported Employment Services, a program that helps people with mental disabilities find work and remain employed.

Ten years ago, Carey was diagnosed with schizophrenia and suffering from paranoia. She was told by doctors she would never work again. But since then, Carey has disproved their thinking and made significant strides in managing her mental illness and finding employment. She doesn't want to allow her mental illness to be an excuse or define her.

After she lost her job last year, Carey worked with her Ascentia case manager Laurie White and employment specialist Joli Magnus, updated her resume and set realistic goals for securing a new job. Now employed as a competitive marketing analyst, Carey continues to receive support from JFSA. Her focus now is on job retention with the goal to improve the longevity of her employment. Joli explains, "Laurie and I are here to support Carey with her goals, to help her overcome self-doubt and be more confident."

Carey exclaims, "I love JFSA, they saved my life at a time when I lost my job and was discouraged. Joli and Laurie help me focus on what's manageable so I don't get overwhelmed, and they've helped me learn coping tricks so if I have a bad thought, it doesn't make me spin out-of-control."

Carey knows she can't do this alone. Having both case management services and Supported Employment Services as part of an integrated treatment plan, Carey can take responsibility for managing her life and her illness.

(left to right) Carey Daws and JFSA's Joli Magnus



LAST YEAR...

JFSA Ascentia Residential Services program operated over **50 residential sites** throughout Northeast Ohio and delivered close to **382,000 hours** of direct service to adults with intellectual disabilities.

Approximately **500 individuals** with serious mental illness were served through JFSA Ascentia Mental Health Services and PLAN's Holistic Recovery Program.

2,700 hours of holistic recovery activities were provided to individuals with serious mental illness.

More than **430 individuals** with disabilities accessed services to help them obtain meaningful employment.



“Living here is good for Michael. It opens up his opportunities and gives him more versatility for his life.”
– James Chesler



PARENTS WITH A PLAN FOR THE FUTURE

It doesn't always take a crisis for a family to reach out for help from JFSA. Sometimes the impetus is the desire for an adult child to have the opportunity to take the next steps towards independence. That's how the Chesler family became involved with JFSA Ascentia Residential Services program.

When Margaret and Jonathan Chesler learned their son Michael had autism, they were determined to have a family life that included him in all activities. But they were also mindful that he was going to eventually grow into adulthood, so early on they began the process of developing a plan of care for him and to face the situation of his special needs with full awareness.

Margaret is an experienced social worker and explains that parents of children with autism need to understand that after their child moves out of the school system, support disappears and without a plan for the future young adults with autism can become lost. For the Cheslers, JFSA's Ascentia fit nicely into their plan. At age 23, Michael moved into Washington House. The family appreciates how well maintained the home is, the attention to detail for the residents – that it's a thoughtful environment with helpful staff. Ascentia provides reassurance that Michael is cared for, so the family doesn't have to worry.

Closeness and family time still matter to the Cheslers. Michael returns to his family's home every Friday night and participates in activities on Saturday. It's the best of both worlds for everyone – Michael has his independent living experience with peers plus happy times with his family. Living at Washington House has expanded Michael's life experiences – he now is willing to try new food and eats more balanced meals, he's more social and has developed good relationships with the other residents, and enjoys house field trips.

A graduate of Shaker Heights High School and CEVEC, Michael works at the Brooklyn Adult Training Center. His brother James observes, “Living here is good for Michael. It opens up his opportunities and gives him more versatility for his life.”

The entire Chesler family appreciates how JFSA enhances Michael's life experience and supports him to be more independent. Margaret comments, “If I dreamed it, this is how it would be – and fortunately it's not just a dream but reality!”

Michael Chesler gives his mom, Margaret, a big hug.

HOLISTIC RECOVERY PAVES A PATH BACK HOME

Becoming a PLAN member has changed Tasha Dore's life. Tasha spent most of her youth dealing with anger. She lashed out, fought, and alienated those she longed to be close with, especially her family. At home her sister wanted to play, but Tasha would push her away. She yearned for friends, but her behavior problems at school led to her being bullied. She resented being placed in Special Ed classes because her AD/HD made her feel different. Later she was diagnosed with bipolar and schizo-affective disorder.

As a member of PLAN, Tasha participated in CET (Cognitive Enhancement Therapy), which uses computer software programs and structured group communications to help increase attention, memory, and problem solving skills for people with mental illness. Tasha says the 14 month program improved her "mindfulness" and ability to manage her anger.

Tasha learned to make friends by participating in different social and recreational activities in PLAN's Holistic Recovery program. In fact, interacting with other PLAN members has inspired Tasha to want to give a face to mental illness so she has begun writing a book to help educate the public. Tasha says, "I look normal. I behave normally most of the time. People find it difficult to believe I'm ill, because you can't really see mental illness."

Vicki Elsoffer, Tasha's family advocate, helps her continue to manage her frustration and stress and talk about her feelings rather than acting out. Most importantly, Vicki is someone Tasha can trust.

PLAN has given Tasha back her family. Now they enjoy family time together, enjoying their boat, playing games, and just hanging out. She can now say, "I love you" to her parents, and has become friends with her sister. Tasha remarks, "My family always loved me, but now they like me too!"



Tasha Dore (left) with her parents Greg and Edie Dore.

**"My family always
loved me, but now
they like me too!"**

- Tasha Dore



LAST YEAR...

307,622 hours of private duty nursing care were delivered to older adults, including personal care, home support, transportation, companionship and light housekeeping.

53,933 kosher meals were delivered by JFSA volunteers to the frail and elderly at home.

Of the **1,163 Holocaust Survivors** accessing services from JFSA Care at Home, **228** individuals received subsidies for basic necessities such as food, medical premiums and equipment, clothing, dental, hearing, vision and personal care.

1,015 older adults were safer at home because they subscribed to the JFSA Lifeline emergency alert button.

AGING WITH DIGNITY

At a remarkable 101 years of age, Ida Barone has just about seen it all, so now she's happy to enjoy life from the privacy of her own home that she's lived in since 1952. Most of her close family are gone now. But her brother Louis lives nearby and comes over if she needs help fixing things around the house.

She appreciates how her choice to live at home on her own is made possible by her two home health aides from JFSA Care at Home, Elena Levine who provides companionship and assistance in the morning and Shushana Elizerov who helps in the afternoon. Ida explains, "I like that I can stay at home. JFSA has nice people who treat me well."

Ida cherishes a simple life with a slow pace to the day, because at her age everything takes longer to do and more effort is required for simple tasks. She relies on Elena and Shushana to vacuum, do laundry, shop and prepare meals, help with showering, and more. She finds it comforting to have them around because falling is a constant worry.

Ida stays mentally alert by reading the newspaper front to back every day – it's how she stays in touch with what's going on in the world, along with watching news programs on television. She follows politics and asserts her right to vote – voting by absentee ballot every election. And she takes care of paying her own bills.

Surrounded by precious possessions and treasured memories, Ida is one of many seniors who enjoy independence and safe living at home with the help of JFSA.

Ida Barone, 101, lives independently at home with help from JFSA Care at Home aide Shushana Elizerov.



HAPPY AND SAFE AT HOME

Despite the unimaginable hardships Regina Adler has endured in her life, from surviving Holocaust atrocities in Auschwitz, subsequently living under the Communist regime in Romania, and the drowning death of her only son at age 14, Reggie (as she is known to friends) continues to embrace life and appreciates opportunities to stay active at the age of 92.

After her beloved husband Joseph died in 1997, Reggie continued to live independently in the South Euclid home they shared for many years, until a bad fall caused a painful back injury and the subsequent need for outside help.

She credits JFSA with saving her life and allowing her to remain in the comfort of her own home. "I live alone, who would know about me, if not for the wonderful people at JFSA, especially Gilda (Katz). She is excellent, like a good sister." Gilda has worked with Reggie since 2000, helping her access many JFSA services, including kosher home-delivered meals each week, deep cleaning services, personal care and help with bill paying and applying for reparations claims.

With her warm and engaging personality, Reggie welcomes visitors to her home and likes it when volunteers stop by with challah and time to chat. She particularly enjoys Café Europa each week, and is thrilled with all the activities offered – from exercise and Tai Chi classes to luncheons. She looks forward to socializing with other Holocaust Survivors each week, and explains, "They all like me there, and everyone is my friend!"

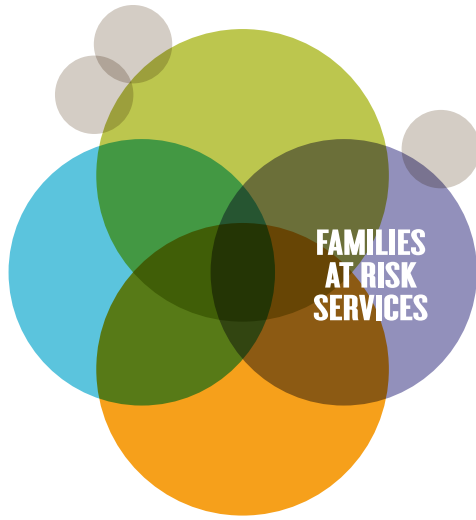
While JFSA has become Reggie's family and spiritual lifeline since that bad fall years ago, she relies on the JFSA Lifeline medical alert button for peace of mind 24 hours a day. She routinely wears the wristband style help button, just in case. Incessantly determined and grateful, Reggie is the essence of why JFSA Care at Home services are integral and beneficial to our community.



JFSA social worker Gilda Katz (right) and Regina Adler. All smiles, laughter, and sunshine, Reggie's positive outlook definitely keeps her young at heart!

"I live alone, who would know about me, if not for the wonderful people at JFSA."

– Reggie Adler



LAST YEAR...

2,875 nights of emergency shelter were provided through the Hebrew Shelter Home.

In its first year, JFSA's summer campership program, generously funded by an anonymous donor, covered the cost of **10 children**, ages 10-15, to attend Jewish overnight camp.

406 families accessed the volunteer operated JFSA Food Pantry, which received donations of non-perishable food items, toiletries and other household goods from volunteers, organizations, staff and board members.

130 unemployed adults participated in JCF's employment-related support program, in which 45 individuals found jobs.

FINDING A HOME OF OUR OWN

The impact of being homeless can be especially daunting when it involves a child. Svetlana and her ten-year-old daughter Daria know this all too well. They endured years of searching for a permanent place to call home, shuttling back and forth between friends and family, never remaining in one city very long. But when they entered the Hebrew Shelter Home, they not only found a safe place to live, but also received professional support from JFSA case manager Rachel Madden. She helped Svetlana (who is hearing impaired) find a permanent place to live and a great school for Daria to attend and participate in activities with other kids her age.

This summer, Daria was one of the first 10 campers to receive a 3 year scholarship through JFSA's new campership program which was established to provide kids currently not involved with Judaism the chance to reconnect with their Jewish culture and traditions in an overnight camp setting.

Daria's experience at Camp Wise was an adjustment for both daughter and mother since they'd never been apart before, but Daria embraced it and had lots of fun making friends and trying new activities such as horseback riding and the giant swing. Because the program received such a positive response in its first year, the anonymous donor funding these camp scholarships decided to increase the number of scholarships to 100 beginning in 2013.



Daria says, "Everyone at JFSA is friendly and very kind. I'm grateful to have the opportunity to go to camp!" Svetlana adds, "A great big thank you to everyone at JFSA!" For Svetlana and Daria, the search for a permanent residence has tested their endurance and strength, but with help from JFSA's Family at Risk services, Hebrew Shelter Home, and support from the Jewish community, they are experiencing a better life today than they ever thought was possible.

Daria is enjoying her childhood again thanks to JFSA and the community.

OVERCOMING ABUSE

When Judith* first met her husband, he was charming and kind and she quickly fell in love. But soon after they got married, she realized something was wrong. Although he was polite and helpful to others publicly, at home a nasty side began to emerge fueled by a need to control. He would lash out and beat Judith and hit their kids. Their home became a private hell. In the cycle of abuse that ensued, all she wanted was for her kids to be ok and to get through a day without him exploding.

So Judith began to form a plan – it gave her focus and the hope that she might live a peaceful, happy life again. She knew that becoming financially independent was crucial to successfully leaving, so she put her energy into pursuing a degree and raising her children, all while enduring the abuse.

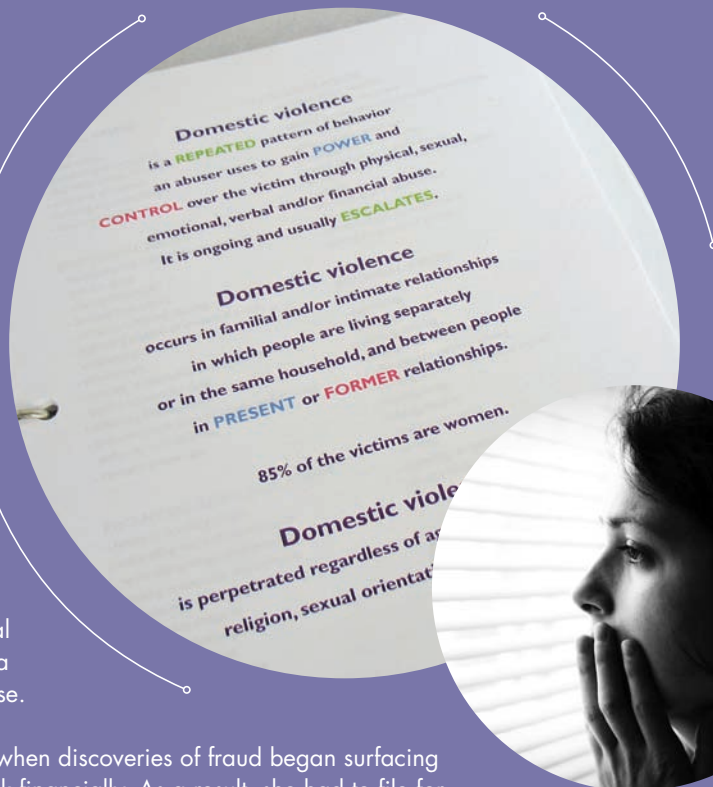
Unfortunately, Judith's plan became fraught with difficulties when discoveries of fraud began surfacing about her husband, and Judith learned he had put her at risk financially. As a result, she had to file for bankruptcy to get out from under debt she didn't even know she had.

With stress mounting from both the physical and financial abuse, Judith contacted JFSA to set up an appointment. After a few counseling sessions in JFSA Ascentia, she was referred to JFSA Families at Risk to get help more specifically for the domestic abuse issues. Judith worked with her case managers and joined JFSA's "Journey to Empowerment" group sessions where she found support and understanding from other women with similar experiences. While Judith attended weekly group sessions, her children worked with an art therapist to help process their feelings.

Judith courageously embraced her painful journey and put her life back together. She is determined to push through the anxiety and talk about her experience because "I felt ashamed and embarrassed about it and kept the abuse secret which enabled it to continue, so I want women to know it's not something to be ashamed about and to get help."

The memories of physical violence and verbal abuse still haunt her, but Judith understands it is part of the healing process. "Words hurt more than getting hit. The bruises eventually fade, but words stay in your mind and undermine your spirit," she remarks. "I still have the exercises and pages of notes from my group sessions. If I start to feel uncertain or scared, I look through them and they help me feel strong again and remember my goals."

Judith has accomplished much during her journey. Today she enjoys her work, has her own home and bank accounts, but most rewarding of all, she has raised two dynamic, respectful children beginning their own journeys as healthy, young adults.



*not her real name.





COLLEGE MADE A LITTLE EASIER

For more than a century, the opportunity for Cleveland area students to attend college has been made a little easier with JFSA's College Financial Aid Program. Through grants, loans and donor named scholarships, college-bound students can reach their educational goals. The following list represents existing scholarship funds:

Anonymous (1)

The Morris Abrams Award in International Relations*

The Jack W. and Shirley Berger Memorial Scholarship*

The Jack W. and Shirley Berger Scholars Fund*

The Sophie and Henry Billys Scholarship*

The Dr. Grace F. Brody Scholarship*

Bruml Family Scholarship

The Frank Joseph & Elaine Sara Garron Memorial Scholarship*

The Eleanor R. Gerson Award for Graduate Students in Social Work*

The Eleanor R. Gerson Education Fund*

Gutarts Family Scholarship

The Solomon and Jennie Hurvitz Scholarship*

Ruth and Charles Jacob Scholarship

The Jaffe Family Community Service Scholarship*

The Mrs. Bert Keller Fund*

The Meisel Family Scholarship*

Raskind Family Scholarship

Barney & Sarah Richman Memorial Scholarship

Rosskamm Family Scholarship

The Stanley & Enid Rothenfeld Memorial Scholarship*

Amy Saltzman Scholarship

Mark Saltzman Scholarship in Business

Shelly Saltzman Scholarship in Education

Frances Senkfor Scholarship in Education

The Irving I. Stone Support Foundation*

William Wortzman Family Education Fund

Yoda-Newton Share the Luv Scholarship

The Howard S. Young Scholarship*

Helen and Morris Zupnick Memorial Fund*

LAST YEAR...

Close to **\$1,000,000** in grants, loans and scholarships was awarded to more than **300 students.**

208 students received college financial aid in the form of grants and loans totaling **\$738,000** thanks to endowed funds held at the Jewish Federation of Cleveland.

113 students received **\$217,571** from 29 different donor funded scholarships.

**Operated under the auspices of the Jewish Federation of Cleveland.*

HONORING OUR GRANDPARENTS

The idea for the new Charles and Ruth Jacob Scholarship evolved when Kyle Bruck and other members of his family gathered in Cleveland for the unveiling of his grandmother's headstone, and decided they wanted to do something to honor her memory. Since Ruth and her husband Charles grew up and raised their family in Cleveland, the extended family wanted to do something that would benefit the Jewish community locally. With those considerations in mind, they discovered JFSA through an online search, and contacted the agency to discuss setting up a scholarship.

Although Kyle's grandparents, like many of their generation growing up during the Great Depression, were not able to pursue a college education, it was always something important to them. They worked and saved to ensure that their children and grandchildren would have that opportunity.

"Our grandparents had to put off their dreams, but the sacrifices they made, made it possible for me and my parent's generation to achieve our dreams. We want to help make that happen for other students who need a bit of extra assistance to pursue their dreams," he says.

Rather than developing scholarship award criteria based on financial need or academic performance, the family chose to make a student's passion for a particular field or activity the focus of the selection process. Each year the scholarship is awarded to a Jewish student who demonstrates a passion and is motivated to pursue it at the undergraduate level. The scholarship is awarded to one student each year who receives \$1,000/per year for 4 years.

The first Charles and Ruth Jacob Scholarship was awarded to Orit Misrahi for her passion for dance. She is currently majoring in Classical Ballet at Goucher College.



Ruth and Charles Jacob in 1945.

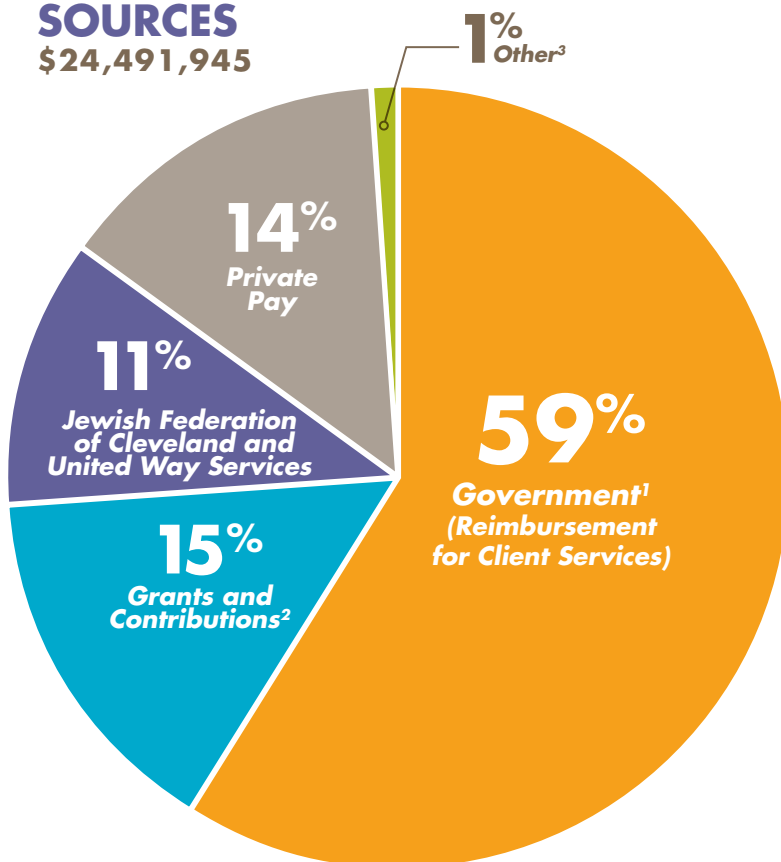
"Our grandparents had to put off their dreams, but the sacrifices they made, made it possible for me and my parent's generations to achieve our dreams."

– Kyle Bruck

AGENCY FINANCIALS

July 1, 2011 thru June 30, 2012

REVENUE SOURCES \$24,491,945



92%
Operating
Expenses

8%
Non-
Operating
Expenses⁴

**TOTAL
EXPENSES
\$26,001,417**

¹Government Sources: Western Reserve Area Agency on Aging, The Centers for Medicare and Medicaid Services, Cuyahoga County Board of Mental Retardation/Developmental Disabilities, ADAMHS Board, State of Ohio, Ohio Department of Human Services.

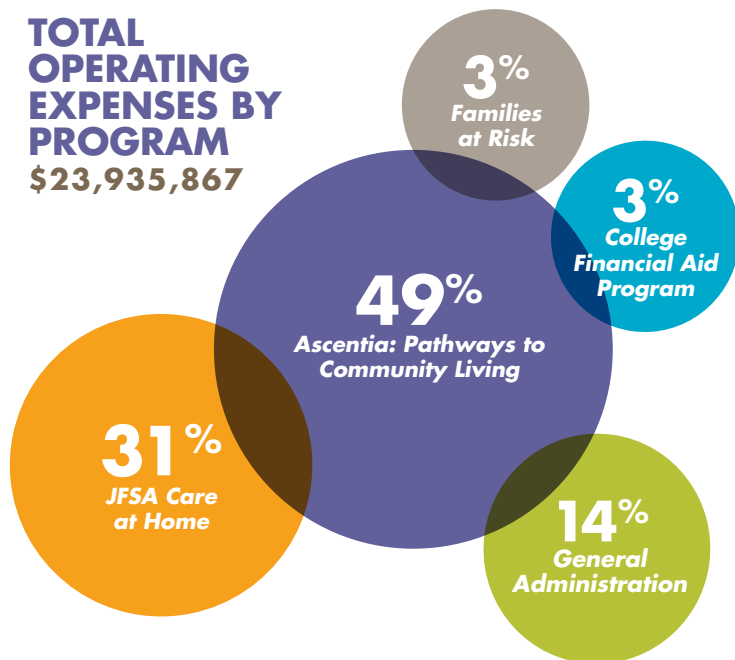
²Includes grants from public and private foundations and grants from government sources. Accounting standards require the recognition of multi-year grants in the year in which they are granted.

³Includes investment income (realized and unrealized gains and losses) rental income, management fees and contributed services.

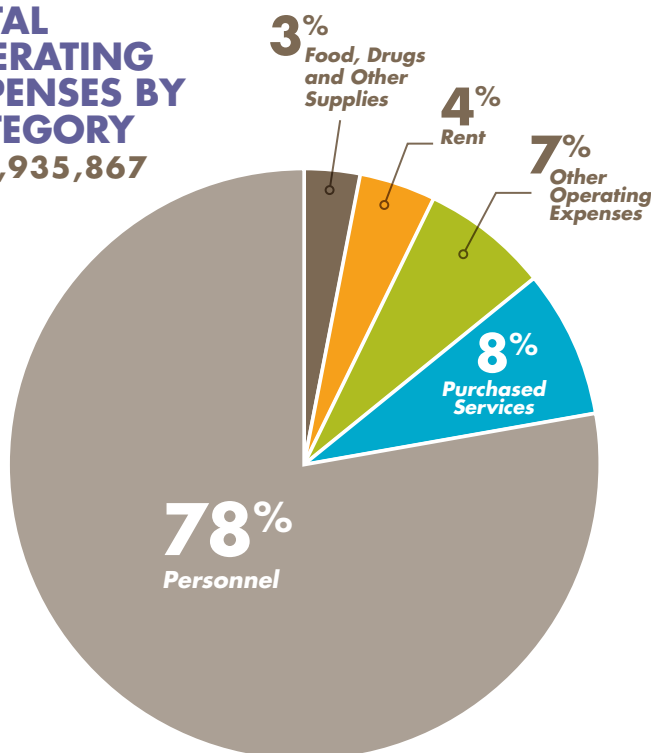
⁴Includes an unfunded pension expense increase of \$2,064,788 and an interest rate swap expense increase of \$762.

All financial data is audited. Audit is available for inspection at the Agency.

TOTAL OPERATING EXPENSES BY PROGRAM \$23,935,867



TOTAL OPERATING EXPENSES BY CATEGORY \$23,935,867



JFSA MANAGEMENT TEAM

Susan Bichsel, PhD
President & Chief Executive Officer

David Hlavac, MBA
Vice President & Chief Financial Officer

Susan Berneike, MPH
Director of Developmental Disabilities Services, Ascentia

Robert Bologa, MBA
Senior Director of Human Resources

Debbie Chickering, MBA
Executive Director, Ascentia

Ginny Galili, MSSA
Executive Director, Families at Risk

Kimberly Jones, RN
Director of Skilled Nursing & Rehabilitation, JFSA Care at Home

Karen Leizman Moses, Esq.
Major Gifts Officer

Wendy Maayan, MAAT
Director of Mental Health Services, Ascentia

Angela Markowitz
Executive Assistant to the CEO & CFO

Irina Mikhalev, RN, BSN
Director of Private Duty Services, JFSA Care at Home

Jeff Morris
Director of Operations

Thomas Petersen
Controller, Director of Finance

Thierry Riek, MBA
Director of Planning & Performance

Anne Rosenberg
Director of Marketing & Development

Jordan Rothkopf, MSW, LISW
Interim Executive Director, JFSA Care at Home

Sheri Sax, RD, LD, LNHA
Associate Executive Director, JFSA Care at Home, Older Adult Services

Stephan Schwartz, PhD
Associate Executive Director, Ascentia

Linus Vysnionis, JD
Manager of Grants and Government Advocacy

Timothy Williams
Chief Information Officer

(left to right) Don Jacobson,
Harvey Kotler, Bill Wortzman

JFSA LEADERSHIP

Board Officers

Robert Immerman, Chair*
Philip Cohen, Vice Chair/Chair-Elect*
Suellen Kadis, Vice Chair*
Ethan Cohen, Treasurer*
Michael Weiner, Assistant Treasurer*
Bruce Goodman, Secretary*
Susan Bichsel, PhD, President & CEO*



Eleanor Steigman (seated)
and (left to right) Marilyn
Bedol and Jean Heflich.



Former Board Chair Karen B. Newborn
(pictured with her granddaughter Charlotte
Thomas) was honored for her many
years of leadership and volunteerism
with older adult programming.



Board Directors

Hinda Abramoff
Trish Adler*
Linda Azoff
Michael Baron
Gary Bilchik
Janice Bilchik, *NCJW Representative*
Eileen Blattner*
Cynthia Bruml*
Mike Cole*
Grant Dinner*
Cynthia Fuerst
Sidney Good*
Mark Goren
Michael Guggenheim
Kent Hayes*
Jean Heflich*
John Herman
Donald Jacobson
David Kaufman
Nathan Klein
Dolores Kleinman*
Andrew Kohn*
Melissa Korland
Harvey Kotler
Shere Lynn Lehman
Patricia Mintz*
Shari Perlmutter
Kevin Robertson
Cary Root*
Larry Rothstein
Robert Schwartz
Leo Silberman
Judy Ulrich

Sally Wagner
John Wirtshafter*
Jonathan Wise

Life Directors

Marilyn Bedol*
Robert Blattner*
Robert Deitz
Chicky Drost
Morton Epstein
Harold Friedman
AB Glickman**
David Goldberg
Sally Good
Herbert Goulder
Alvin Gray
David Inglis**
William Joseph**
Marvin Lader
Arthur Mayers
Chuck Mintz
Karen B. Newborn*
Elmer Paull
Michael Peterman
Charles Rosenberg
Alan Schonberg
James Spira
Myrna Spira
Eleanor Steigman
David Strauss
Will Sukenik
Philip Wasserstrom
Sally Wertheim
William A. Wortzman,
Immediate Past Chair

ENDOWMENT FUNDS

These funds maintain the principal in perpetuity and allow JFSA to use the income where it is designated. List represents funds as of 6/30/12. Gifts to these funds are recognized in the donor listings beginning on page 20.

Ascentia Endowment

*Supports Ascentia programming and services for people with intellectual disabilities and/or mental illness. Includes the JFC/Ascentia Centennial Initiative Endowment Fund.**

Deborah Ann Baker Memorial Fund

Supports clients with little financial resources to enjoy quality of life activities. Gift of Fannie and Ed Baker.

Irene and Eugene Brudno Fund to Serve Persons with Severe Mental Illness

Supports services for persons with severe mental illness and to fund Ascentia management and infrastructure costs. Gift of Irene and Eugene Brudno Charitable Remainder Trust.

Lynne and Philip Cohen Family Fund for Youth Programming

Supports programming for youth. Gift of Lynne and Philip Cohen.

Families at Risk Endowment Fund

Supports the Hebrew Shelter Home and Family Violence Services for individuals experiencing homelessness, domestic violence and/or financial hardships and supports Know Abuse™ teen outreach and prevention. Funded in part with matching gifts from Robert Immerman.

Richard Horvitz and Erica Hartman-Horvitz YouthAbility Program Endowment Fund

Supports YouthAbility programming. Gift of Richard Horvitz and Erica Hartman-Horvitz.

PLAN ENDOWMENT

Supports PLAN's quality of life programs and holistic recovery services that help those challenged by chronic mental illness progress in their recovery. Funded in large part by a gift from the Maltz Family Foundation*.



Tamar and Milton Maltz

ENSURING CONNECTION TO COMMUNITY

When JFSA merged its Ascentia behavioral health services with PLAN of Northeast Ohio last summer, it received a major boost with funding provided through a \$2 million endowment gift from the Maltz Family Foundation of the Jewish Federation of Cleveland. As a result of the merger and endowment funding, PLAN's Holistic Recovery Support Services continues to operate without disruption, and PLAN members enjoy direct access to JFSA Ascentia's wide array of services.

"We have long been supporters of PLAN and its mission. This endowment gift was made to ensure that people with serious mental illness will continue to be able to access meaningful services and supports that help them manage their illness and live a good quality of life in our community," says Milton Maltz.

PLAN members, JFSA Ascentia clients and their families praise the Maltz Family for their extraordinary generosity and for recognizing the critical role that Holistic Recovery Support Services, such as social and recreational outings, volunteer opportunities and art therapy, play in the lives of individuals with serious mental illness.



Bob Immerman

\$1 MILLION DOLLAR CHALLENGE

In an exceptional expression of commitment, support and desire to perpetuate the mission of JFSA, Board Chair Bob Immerman and The Immerman Fund of the Jewish Communal Fund committed \$1 million to JFSA, including \$500,000 to benefit JFSA and Jewish Community Housing and a \$500,000 Challenge Grant to benefit JFSA's General Endowment and Families at Risk (FAR) Endowment. Together, this will generate \$1.5 million in endowment funding that will support JFSA's mission into the future. Bob's extraordinary leadership gift and Challenge Grant have encouraged others to join him in supporting JFSA. To date¹, the following individuals and families have supported the Immerman Challenge Grant, generating \$610,000 in overall giving:

Anonymous

Louise Abrams and Robert Fuerst

Trish and Mark Adler

Sherri and Marc Blaushild

Lynne and Philip Cohen

Lois Davis

Grant and Jennifer Dinner

Irving and Gloria Fine

Lou Freiberg

Suellen and Larry Kadis

David and Judy Kaufman

Andrew and Joan Kohn

Harvey and Norma Kotler

Legacy Capital Partners

Meisel Family Foundation

Alex and Anne Miller Family Fund

(Sally Good, Sid Good, Alan^{**} and Ruth Miller)

Michael and Anita Siegal Family Foundation

Jim and Myrna Spira

Will and Jan Sukenik

If you are interested in the Challenge Grant, please call Karen Leizman Moses, Esq. at 216.504.6407.

ENDOWMENT FUNDS (CONTINUED)

Jewish Community Housing/JFSA Centennial Initiative Endowment Fund*

Supports affordable supportive housing for individuals with disabilities and other at-risk populations.

JFSA Endowment Fund

Supports long term sustainability of the Agency. Funded in part with matching gifts from Robert Immerman.

JFSA Endowment Fund for the Future

Board designated fund that supports long term infrastructure needs.

Kesher Fund

Supports programming in the Orthodox Jewish community. Gift of the Klein, Jaffa and Halpern families.

Harvey and Norma Kotler Endowment Fund

Supports Families at Risk Endowment Fund. Gift of Norma and Harvey Kotler.

MRDD Endowment

Supports programming and residential services for adults with intellectual disabilities.

Cary and Barbara Root Fund for Fostering Ascentia Communications through Technology

Supports funding for communications to Ascentia families. Gift of William Wortzman.

Sarah and Josephine Rosin Fund

Supports individuals with mental disabilities living independently. Gift of the Trustees of the Sarah Rosin Trust.

Abraham and Pauline Segal Fund for In-Home Support of the Elderly

Supports funding for older adults who wish to remain at home. Gift of Rita Saslaw, Michael Saslaw, and Maryellen S. Oberman.

Anne Wortzman Fund for Work, Social and Recreation Skill Building for Persons with Mental Disabilities

Supports Ascentia programming for individuals with intellectual disabilities and mental illness. Gift of William Wortzman.

Other General Endowment Funds

Established by the JFSA Board of Directors.

JVS Endowment Fund

Kaufman Scholarship

*Operated under the auspices of the Jewish Federation of Cleveland.

¹Gifts pledged through 10/17/12. ^{**}Of blessed memory.

NON-ENDOWMENT FUNDS

These funds have been designated to support specific programs, projects or needs. List represents funds as of 6/30/2012.

Hope and Stanley Adelstein JFSA Care at Home Fund

Supports JFSA Care at Home services for needy adults who wish to remain in their home. Gift of Hope and Stanley Adelstein.

Trish and Mark Adler Fund for Group Home Residents

Supports quality of life enhancements for residents of supportive living sites and group residences. Gift of Trish and Mark Adler.

Marilyn and Marshall Bedol Fund for Social and Recreational Programming for the Special Needs Community

Supports social and recreational outings for adults with mental illness and/or mental disabilities. Gift of Marilyn and Marshall Bedol.

Berns Newborn Family Fund

Supports programs and services for older adults. Gift of Karen B. Newborn.

Susan Bichsel Discretionary Fund

Supports client needs and staff recognition. Gift of the JFSA Board of Directors in honor of President and CEO Susan Bichsel.

Norman J. Danzig Memorial Fund

Establishes the Danzig Award for Lay Leadership and supports the professional development of young lay leaders. Gift of the JFSA Board of Directors in memory of board member Norman Danzig.

Irving and Gloria Fine Fund for Quality of Life Enhancements

Supports quality of life funding for adults with intellectual and developmental disabilities. Gift of Irving and Gloria Fine.

Rosalie Ginsburg Fund for YouthAbility

Supports programming for YouthAbility. Gift of Robert Ginsberg and William Ginsberg in honor of their mother Rosalie.

Holocaust Survivor Life Enhancement Fund

Supports basic needs and life enhancements for Holocaust Survivors. Gift of Phyllis and Frank Hulewat.



The JFSA/Jewish Federation of Cleveland Holocaust Survivor Advisory Committee helps ensure that Survivors receive support where it's needed most.

Anne and Alex Miller Fund

Supports services to the elderly. Gift of Anne and Alex Miller.

Katherine A. and Noah D. Rusnak Fund for Individual and Family Needs

Supports funding to improve the health and functioning of individuals and families. Gift of Susan Bichsel and Stephen Rusnak.

Alan R. Schonberg Fund to Strengthen Families

Supports funding for families in need. Gift of the JFSA Board of Directors in honor of Alan Schonberg's tenure as Board Chair.

Spira Ascentia Fund

Funds innovative initiatives that further the mission of Ascentia. Gift of Jim and Myrna Spira.

Eleanor Steigman Fund for Older Adult Services

Supports programming for older adults. Gift of contributors in honor of Life Director Eleanor Steigman's lifetime of community service.

Anne Wortzman Fund for Work, Social and Recreation Skill Building for persons with Mental Disabilities

Supports Ascentia programming for individuals with intellectual disabilities and mental illness. Gift of William Wortzman.

Lois Zaas Fund for the Maturing Community

Supports programming for the older adult community. Gift of Donald Zaas.

Irene and Sidney Zehman Library Fund

Supports the purchase of books and other resources for the Zehman Library at the Drost Family Center. Gift of Roslyn Wolf and Judy Sherman in honor of their parents.

MANY THANKS

TO THE FOLLOWING JEWISH
FEDERATION OF CLEVELAND
CENTENNIAL INITIATIVE FUNDS
WHICH SUPPORT JFSA'S
ASCENTIA ENDOWMENT:

**Aron and Dorothy Drost
Centennial Initiative
Ascentia Endowment Fund**

**Becker/M&M Realty JFSA
Ascentia Endowment Fund**

**Alvin Gray Centennial
Initiative Ascentia
Endowment Fund**

**Richard Horvitz Centennial
Initiative JFSA Ascentia
Endowment Fund**

**Isenstadt JFSA Ascentia
Endowment Fund**

**Jewish Community Housing/
Immerman Fund**

**Marvin Lader JFSA
Centennial Initiative
Ascentia Endowment Fund**

**Louis and Sylvia Rosenblum
Memorial JFSA Ascentia
Endowment Fund**



the centennial initiative
FOR JEWISH CLEVELAND

FOUNDATIONS & GRANTORS

**Alcohol, Drug Addiction and Mental
Health Services Board of Cuyahoga
County**

**The Eva L. and Joseph M. Bruening
Foundation**

The Cleveland Foundation

**Conference on Jewish Material Claims
Against Germany, Inc.**

*German Government In-Home Services Grant
Hungarian Government Fund*

*Successor Organization Social Services
Program*

*Harry and Jeanette Weinberg Holocaust
Survivor Emergency Assistance Fund*

**Cuyahoga County Department of Justice
Affairs - Violence Against Women Act
(VAWA)**

**The Harry K. & Emma R. Fox Charitable
Foundation**

Giant Eagle Foundation

**Jewish Federation of Cleveland and its
Supporting Foundations and Special
Purpose Funds**

*Louis, Celia and Joseph L. Abrams Memorial
Fund*

The Mildred & Martin Becker Family Foundation

The Bobby Fund

*Ellen E. and Victor J. Cohn Supporting
Foundation*

*Aron and Dorothy Drost Holocaust Survivors
Fund*

Rina & Samuel M. Frankel Family Foundation

The Peggy and John Garson Family Foundation

Nathan L. and Regina Herman Charitable Fund

Lader Family Foundation

The Madav IX Foundation

Maltz Family Foundation

Meisel Family Foundation

*David and Ruth Moskowitz Family Charitable
Foundation*

*List represents program grants received
between July 1, 2011 and June 30, 2012.*

David and Inez Myers Foundation

The Maurice Saltzman Youth Panel

The Nathan and Fannye Shafran Foundation

Michael and Anita Siegal Family Foundation

David and Robert Stein Family Foundation

The Treu-Mart Fund

Nina and Norman Wain Family Foundation

*The Bennett & Donna Yanowitz Family
Foundation*

Zilber Family Foundation

**The Milton and Tamar Maltz Family
Foundation**

Mt. Sinai Health Care Foundation

**National Council of Jewish Women,
Cleveland Section**

**Ohio Attorney General State Victims
Assistance Act (SVAA)**

**Ohio Attorney General Victims of Crime
Act (VOCA)**

**Ohio Department of Transportation
Specialized Transportation Program**

**Ohio Office of Criminal Justice Services
Edward J. Byrne Memorial Justice
Assistance Grant (JAG)**

**Ohio Office of Criminal Justice Services-
Family Violence Prevention Act**

**The Elisabeth Severance Prentiss
Foundation**

Ridgecliff Foundation

**Michael Talty and Helen Talty Charitable
Trust**

Western Reserve Area Agency on Aging

**Women's Independence Scholarship
Program, Inc.**

The Woodruff Foundation



Claims Conference ועידת התביעות
The Conference on Jewish Material Claims Against Germany

JFSA DONORS

Donor list represents gifts to JFSA's Annual Campaign, Endowment, Named Donor Funds, Scholarships, Tribute Gifts and Program Gifts between July 1, 2011 and June 30, 2012.

\$50,000 PLUS

Louis, Celia and Joseph L. Abrams
Memorial Fund
Rick and Erica Horvitz
Robert Immerman
The Klein Family*
Will and Jan Sukenik/
Sukenik Family Foundation

\$20,000 - \$49,999

The Mildred & Martin Becker
Family Foundation
Aron and Dorothy Drost
Holocaust Survivors Fund
Irving and Gloria Fine
Leonard and Joan Horvitz
Harvey and Norma Kotler*
William Wortzman
Timothy and Sandy Wuliger/
The Wuliger Foundation

\$10,000 - \$19,999

Grant and Jennifer Dinner*
Dolores and James Kleinman
Andrew and Joan Kohn
Sydell and Arnold Miller Family Foundation
Daniel and Ellen Zelman

\$5,000 - \$9,999

Anonymous
Anonymous (in memory of Donald Novick)
Stanley and Hope Adelstein*
Jules and Fran Belkin*
Cynthia and Robert Bruml
Lynne and Philip Cohen*
Marv and Carol Lader/Lader Family Foundation
Sam and Clare Minoff*
Patricia and Charles Mintz*
Karen and Norton Newborn
Joel and Sharon Peerless
Peter and Julie Raskind/Raskind Family Fund
Albert and Audrey Ratner
RIK Enterprises, LLC.
Shelly and Mark Saltzman*
Alan and Carole Schonberg*
James and Myrna Spira*
William Weiss*/**

\$2,500 - \$4,999

Baker & Hostetler
Susan Bichsel and Steve Rusnak
Robert and Eileen Blattner
Morton and Natalie Epstein*
Sally Good
Sid Good

JFSA CONTINUOUS GIVING SOCIETY

The JFSA Continuous Giving Society exists to provide special acknowledgement to long-term donors and to bring distinction to those individuals who support JFSA through ten or more consecutive years of giving. Ongoing annual support by consecutive donors strengthens our ability to create and sustain critical programs and services. The following individuals have made gifts to JFSA for ten consecutive years or more for the period ending June 30, 2012:

Louise Abrams and Robert Fuerst

Trish and Mark Adler

Linda Azoff

Selma Baron

Marilyn and Marshall Bedol

Gary and Janice Bilchik

Paul Blumberg

Toby and Norman Bresky

Michael and Bonnie Cole

Lois Davis

Chicky Drost

Morton and Natalie Epstein

Morton and Carol Frankel

Harold and Nancy Friedman

Delores and Martin Goldfarb

Sally Good

Sid Good

Kent and Jerrye Hayes

Ursula Heinen

Robert Immerman

Barbara Ingram

**Recommended by these individuals from their donor advised funds of the Jewish Federation of Cleveland.*

***Of blessed memory ***Matching gift*

We make every effort to ensure the accuracy of these lists.

Please contact the Marketing & Development Department with any corrections at 216.504.6451.

Continued on page 20.

JFSA CONTINUOUS GIVING SOCIETY (CONTINUED)

Fred and Sally Isenstadt
Dolores and James Kleinman
Andrew and Joan Kohn
Marvin and Carol Lader
Kathy and Robert Leb
Adam and Nancy Levin
Martin and Lois Marcus
Stanley and Barbara Meisel
Patricia and Charles Mintz
Karen and Norton Newborn
Elmer and Eudese Paull
Shari and Michael Perlmutter
Kim and Paul Pesses
Michael and Barbara Peterman
Charles and Maxine Rosenbaum
Charles and Gayle Rosenberg
Robert and Margo Roth
Jackie and Fred Rothstein
Donald and Toni Scherzer
Alan and Carole Schonberg
Robert and Sandy Schwartz
Melvin and Maude Shafron
Eric Shaw
Robert Silverman
Barbara Solomon
Eleanor Steigman
David and Penny Strauss
Will and Jan Sukenik
Lynn and Harold Wasserman
Gail and Ed Weintraub
Leo Weiss
Judy and Steven Willensky
John and Linda Wirtshafter
William Wortzman
Timothy and Sandy Wuliger
Donald Zaas

The Horowitz Ratner Family Foundation
David** and Patricia M. Inglis
Donald and Judy Jacobson
Robert and Margo Roth/
The Roth Pharmacy Group
Senkfor Family Foundation
Edward Snyder
David and Penny Strauss
Joyce and Frederick Tavill
Transcon Builders, Inc.
Stephen and Penni Weinberg
Michael and Danielle Weiner

\$1,000- \$2,499

Anonymous
Hinda and Howard Abramoff
Louise Abrams and Robert Fuerst
Trish and Mark Adler
Anshe Chesed Fairmount Temple
Linda Azoff
The Bach Family Foundation
Michael Baron and Beth Segal
Michael Bass
Marilyn and Marshall Bedol*
Wendy Blattner and Tom Inck
The Bobby Fund
John Brelus
Kyle Bruck
Scott and Carol Burg
Gerald and Beatrice Camiener
Linda and Howard Chapman
Ethan and Gena Cohen
Ellen E. & Victor J. Cohn
Supporting Foundation
Michael and Bonnie Cole*
Lois Davis
The P&W Evans Charitable Foundation
Thomas Gerson*
Estate of Amelia Gluck
Delores and Martin Goldfarb
Johanna Goldfarb and Kerry Levin
Marshall and Sandra Goldman
Barbara and Lev Gonick
Bruce and Lynn Goodman
Alvin Gray*
Steven and Edith Greenberg
Harley and Rochelle Gross
Michael and Abbey Guggenheim
Rostislav and Inga Gutarts
Seth Harris
Kent and Jerrye Hayes
Stephen and Amy Hoffman
Martin Hoke
Hyatt Legal Plans
Barbara Ingram
Helen Ingram
George and Jane Jasper
Jewish Community Programs for
Women and Children
William R. Joseph**
Pamela and Craig Kahn
Irving and Wally Kaplan
Dr. and Mrs. Richard Katzman*
Adelle Kendis*
Sue Ellen and Jeffrey Korach
Sherelynn Lehman
Beth and Ron Levine
Sandra Lipman*
The Mandel Foundation
Richard and Margaret Margolis*
Joel and Rochelle Marx
Stanley and Barbara Meisel*
Oswald Companies
Jack and Lenore Peretz*
Edith Peskin
Elisabeth Plax
Kevin and Sharon Robertson
Joseph and Nechama Rosenbaum
Larry and Georgia Rothstein
Paul** and Susan Shapiro
Eric Shaw
Ilene Shaw

**Recommended by these individuals from their donor advised funds of the Jewish Federation of Cleveland.*

***Of blessed memory ***Matching gift*

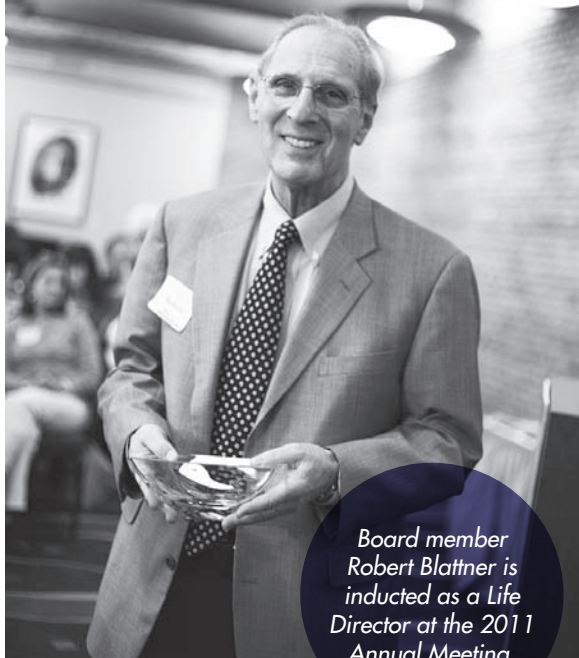
We make every effort to ensure the accuracy of these lists.

Please contact the Marketing & Development Department with any corrections at 216.504.6451.

Barbara Solomon*
 Theodore and Phyllis Swindells
 Dominic A. Visconsi, Sr.
 Sally Wagner
 Nina and Norm Wain Family Foundation
 Jay and Marshalla Yadav
 Donald Zaas

\$500 - \$999

Ancora Foundation
 Benesch, Friedlander, Coplan & Arnoff LLP
 Kenneth and Laura Berns
 Gary and Kathy Bigham
 Gary and Janice Bilchik
 B'nai Jeshurun Congregation
 Nan Cohen and Daniel Abrams*
 Frank and Kimberly Dixon
 Mary Meredith Dobyns
 Daniel and Paula Dreyfuss
 Chicky Drost
 John and Kathy Eyerman
 Susan and Leonard Feinstein Foundation
 Midori and Claudio Fiocchi
 Michael and Sondra Friedlander
 Steven and Harriet Friedman
 Sheldon and Barbara Fromson
 Cynthia Fuerst
 Jeffrey and Jodi Gottlieb
 Herbert Goulder
 Andrew and Judy Green
 Jeffrey Grover
 Jean Heflich
 Deborah and Ronald Heller
 J. David and Rebecca Heller
 Hermann, Cahn & Schneider, LLP
 David and Janet Hlavac
 Wilson and Nancy Huhn
 Robert and Susan Hurwitz
 John Hyvnar
 Suellen and Lawrence Kadis*
 Melvin and Lola Kamins



Board member
 Robert Blattner is
 inducted as a Life
 Director at the 2011
 Annual Meeting.

Sally Kandel
 Loren and Fern Kendis
 Rik and Nancy Kohn*
 Robert and Elayne Kwait
 Barbara and Ronald Lang
 LPL Financial***
 Martin and Lois Marcus
 David Miller
 Stephanie and Jared Miller Fund
 Shari and Michael Perlmutter
 Kim and Paul Pesses*
 Larry and Julia Pollock*
 Progressive Insurance Foundation***
 Janet and Paul Ricchetti
 Paul Rienerth and Lark Dickstein-Rienerth
 Cindy and Leonard Robinson
 Cary and Barbara Root
 Charles and Maxine Rosenbaum
 Anne Rosenberg
 Charles and Carole Rosenblatt
 Fred and Anne Rzepka
 Donald and Toni Scherzer
 Robert and Sandy Schwartz

JFSA PLANNED GIFTS

The following individuals have invested in the future of JFSA through a bequest, gift annuity or other planned gift arrangement. These planned gifts help to secure JFSA's mission and sustain its high quality programming and services well into the future.

Anonymous (2)
Marilyn Bedol
Eugene Brudno**
Irene Brudno**
Bonnie and Mike Cole
Peggy Einstein
Mort Epstein
Gloria and Irving Fine
Amelia Gluck**
Judah L. and Esther C. Hexter
Judy and Don Jacobson
Eda Kochman**
Sarah Rosin**
Phyllis Saul**
Sanford Saul**
Myrna and James Spira
Jan and Will Sukenik
Sally Wagner
Isaak Wekselman**
Anne Wortzman Fund
for Work, Social and
Recreational Skill Building
for Persons with Mental
Disabilities

*Recommended by these individuals from their donor advised funds of the Jewish Federation of Cleveland.

Of blessed memory *Matching gift

We make every effort to ensure the accuracy of these lists.

Please contact the Marketing & Development Department with any corrections at 216.504.6451.

**Of blessed memory.

List represents commitments as of 10/15/12.

Melvin and Maude Shafron
 Leo and Paula Silberman
 Heidi Solomon
 Lauren and Steven Spilman
 Eleanor Steigman*
 Mark and Fran Steinbock
 Vic and Marjorie Strimbu
 Judith Ulrich
 Jack and Blanche Valancy
 Gail and Ed Weintraub
 Weizman Family Fund
 John and Linda Wirtshafter
 The Nathan Wisneski Fund
 Gerald and Iris Zahler
 Burt and Sandi Zucker*



Horvitz YouthAbility member Brian Jasper accepts the Martin Luther King Jr. Award from Cleveland Mayor Frank Jackson on behalf of all YouthAbility members.

\$250 - \$499

Anonymous
 Rebecca Allgeier and Otto Kausch
 Elliot Azoff
 Todd and Stacey Behrens
 Annie Belkin
 Berkowitz-Kumin-Bookatz
 Marlyn and Ari Bloch Jaffe
 C & M Field Services, Inc.
 California Pizza Kitchen, Inc.
 Stephen and Linda Campbell
 Debbie Chickering
 Catherine Connell
 Corky & Lenny's
 Victoria and Florin David
 David Davis
 Josephine and Pieter de Haseth
 Dino Palmieri Salon
 Pat and Laurie Dittoe
 Billie and Rick Erickson
 Sam and Lisa Friedlander
 John and Laura Gaglione
 Gitta Gans
 vic and joan gelb*
 General Electric Employees
 Brian Gingerich and Dulcey Barr
 Boris Gliner
 Susie and Marc Gordon
 Paul Hardwig
 John and Lori Herman
 Robert Hexter
 Michael and Jane Horvitz*
 JM Wasserman Co., Inc.
 William Jones
 Joanne Klein and Marshall Nurenberg
 Kimberly and Ronald Kolz
 Randall and Jennifer Korach
 Isay Krainsky
 Leikin Motor Co.
 Alexander and Svetlana Loshakov
 Marilyn Lowitt
 Tamar Maltz

Greg Marcus and Shelley Milin Marcus*
 Herbert and Cookie Marcus
 Angela Markowitz
 McCarthy, Lebit, Crystal & Liffman Co., L.P.A.
 Carolyn Olds Mikels
 Mark and Nancy Mintz
 Harriet and Mel Morris
 MultiPlan Services Corporation***
 Paladar
 John and Mary Lou Palermo
 Nancy and Allan Pearl
 Michael and Barbara Peterman
 Thomas and Karen Petersen
 Earl Pike and Elizabeth D. Klein
 Miriam and Martin Plax*
 Tod Podl
 Ronald and Nancy Rafal
 Rampe Manufacturing Co.
 Jack L. Rappoport Foundation
 Ann and Garry Regan
 Renaissance Charitable Foundation Inc.
 Thierry and Wendy Riek
 Carol Rolf and Steve Adler
 Jackie and Fred Rothstein
 Harry and Rita Rzepka
 Gordon and Evelyn Safran
 Suzanne and Henry Schnepkes
 Mitch and Sandy Shaheen
 Michael and Anita Siegal*
 Robert and Eileen Sill
 Monica Silver
 Maureen and Barry Sokolov
 Richard and Myra Stone
 Shimon Stone
 The Temple - Tifereth Israel
 Vendors Exchange
 Andrei and Carmen Vermont
 Dominic and Julie Visconsi, Jr.
 Judith and Bryon Wasserman
 Lynn and Harold Wasserman
 Philip and Margaret Wasserstrom
 Arthur and Jennifer Weisman

Recommended by these individuals from their donor advised funds of the Jewish Federation of Cleveland. **Of blessed memory *Matching gift
 We make every effort to ensure the accuracy of these lists. Please contact the Marketing & Development Department with any corrections at 216.504.6451.*

Eleanor J. Weisman
Chuck and Randi Wien
Judy and Steven Willensky*
Caryn Wolf-Wechsler
Albert D. Yedid

\$100 - \$249

Anonymous
Joanne and Stephen Abel
Lenny Abramov
Robin and Michael Abrams
Elan and Michelle Adler
Barbara and Hymie Akst
Dwight and Joan Allgood
Anne and Richard Ames
Sherri Appleton and Marty Resnik
Dennis and Beverly Balcer
Richard Bamberger
Carol and Phillip Baptiste
Selma Baron
Carolyn and Douglas Barr
Christina and Charles Bascom
Michael and Faye Bass
The Beaute Room Salon
Dennis and Sarah Behrens
Richard and Dee Behrens
Christopher and JoAnne Bellamy
Susan Berger and Robert Brown
Lynne and Irv Berliner
Laurie and Gary Biales
The Blaushild Family Club
Paul Blumberg
Mark and Michelle Bogomolny
Mary and Andy Boksansky
Edgar and Elizabeth Boles
Herbert and Helen Braun
Maureen Brennan and Andy Resetar
Toby and Norman Bresky
Garry Brown
Pat and Hank Brownell
Richard and Patricia Burk
William Burrow

COMBINED GIVING

The following supporters have demonstrated exceptional commitment to the JFSA family by making gifts and/or commitments totaling \$1,000 or more across JFSA, Hebrew Shelter Home and PLAN between July 1, 2011 and June 30, 2012. We are very pleased to recognize these special donors and funders:

\$20,000 PLUS

Harvey and Norma Kotler
The Milton and Tamar Maltz Family Foundation
Sam and Clare Minoff
The Mt. Sinai Health Care Foundation
The Maurice Saltzman Youth Panel*
Will and Jan Sukenik
The Treu-Mart Fund*
William Wortzman
Timothy and Sandy Wuliger
Daniel and Ellen Zelman

\$10,000 - \$19,999

Grant and Jennifer Dinner
Kent and Jerrye Hayes
Dolores and James Kleinman

\$5,000 - \$9,999

Lynne and Philip Cohen
The Nathan L. and Regina Herman Charitable Fund*
David and Ruth Moskowitz Family Charitable Foundation*
Joel and Sharon Peerless
The Nathan and Fannye Shafran Foundation*

\$1,000 - \$4,999

Anshe Chesed Fairmount Temple
Marilyn and Marshall Bedol
Susan Bichsel and Steve Rusnak
Scott and Carol Burg
Gerald and Beatrice Camiener
Mary Meredith Dobyns
Daniel and Paula Dreyfuss
Morton and Natalie Epstein
Sally Good
Steven and Edith Greenberg
Suellen and Lawrence Kadis
Melvin and Lola Kamins
Dr. and Mrs. Richard Katzman
David and Judy Kaufman
Robert and Elayne Kwait
The Bennett & Donna Yanowitz Family Foundation*
The Nathan Wisneski Fund

Robert and Frances Cahn
 Walter and Diane Chapman
 Elizabeth and Keith Chelm
 Florence Chelm
 Maksim Chernyarsky
 Caroline Chesebrough
 Barry and Lynn Chesler
 Lia Chesner
 Hillel Chiel and Elizabeth Dreben
 William and Mary Chilcote
 Cleveland Clinic
 Ronald and Marilyn Cohen
 Marc Collin and Rita Cydulka
 Thomas and Sondra Cristal
 Jeffrey and Marti Davis
 E. Mandell and Susan de Windt
 Anthony DeMauro
 Paul and Harriet Dennis
 Elizabeth Dery
 Gary and Andrea Desberg
 DeWine Family Foundation, Inc.
 David and Frances Dickenson
 Barbara Discenna
 Peggy and Gary Dorfman
 Donna Driscoll
 Leslie and John Dunn
 Elaine Eisner and Scott Gohn
 Michael and Diane Ellis*
 Gerald and Shulamith Erenberg
 Deborah and Alan Erenrich
 Todd and Marge Evans
 Jerry and Barbara Federman
 Joseph Felber*
 Scott Finerman
 Andrew and Judith Finger
 Marion and Steven Fish
 Ronald and LuAnne Fisher
 Sherry and Mark Fixler
 Eric Fox
 Michael and Lydia Frankel
 Stanley and Francene Freeman
 Ann and Marc Freimuth
 Bernard and Linda Friedman

Harold and Nancy Friedman
 Ginny and Gadi Galili
 Steve and Marilyn Garfunkel
 Jeremy and Amy Gilman
 Nancy Glick and Randy Solomon
 Charlotte Goldberg
 Pearl Goldstein
 Norman and Arlene Golovan
 Ronald and Lisa Golovan
 GoodSearch.com
 Fran Gordon
 Gary Gorrel
 Louis and Roseann Gottlober
 Lottie Gray
 Edward and Barbara Greenberg
 Penny and Robert Greenberger
 Michele Greene
 Richard Greene
 Sally and William Greene

Rona and Bruce Greenwald
 Robert and Sally Gries
 Alan and Ruth Gurd
 Fenya and Peter Gutarts
 Bernice and Zev Harel
 Jane Harkey
 David and Lynn Heiman
 Robin and Lenny Heiser
 John Herrick
 Judah and Esther Hexter
 John and Elaine Hibshman*
 John and Mary Hill
 Carol Holley
 Thomas Holley
 Maggie Hollman
 Carolyn Holt
 House of Zion, Peninsula Stamps
 Ignite Hair Salon
 Impullitti Landscaping
 Debby Jacob
 Kris Jaenicke
 Jerusalem Grill, LLC
 Stephen and Alyssa Jordan
 Kim Joseph
 David and Judy Kaufman*
 Sara Kay
 Julie Keller
 Janet Kirschenbaum
 N. Herschel and Maxine Koblenz
 Burton Kohn
 Lee and Marjorie Kohrman
 J. Michael and Joan Kolk
 Marcia Korenstein
 Adria and Alan Krantz
 Keith and Kristen Kraus
 La Coiffe, Inc.
 Labyrinth Sales Company, Inc.
 Fran Lasky
 Tom and Jane Lassar
 Lavish Color Salon
 Jill Ledin and Joseph Znidarsic
 Ellen and Earl Leiken
 Margaret Leiser



Heidi Solomon (center) receives the Ohio Department of Mental Health Resiliency Award for her work with the Horvitz YouthAbility program. With her are Debbie Chickering (left) and Tracy Plouck, Executive Director of the Ohio Department of Mental Health (right).

Recommended by these individuals from their donor advised funds of the Jewish Federation of Cleveland. **Of blessed memory *Matching gift
 We make every effort to ensure the accuracy of these lists. Please contact the Marketing & Development Department with any corrections at 216.504.6451.*

Karen Leizman Moses and Barry Moses
 L. Douglas and Jeannette Lenkoski
 Shirley Leventhal
 Ariella Rose Levine Foundation
 Berinthia and Mark LeVine
 Light Touch Aesthetic Center
 The Locksmith Hair Studio
 Lorain County Community College Foundation
 Irwin Lowenstein and Heather Ross-Lowenstein*
 Mandel Jewish Community Center
 Ken and Janisse Marblestone
 Mar-Lou Shoes, Inc.
 Marshall Carpet One
 Reed and Kristine McGivney
 Arthur Merriman
 Kimberly Meshanko
 Michael and Susan Miller
 Paul and Lynn Millet
 Robert and Diane Mintz
 Helene Mlotek
 Harriet Morse
 Milton and Esther Moss*
 Thomas and Pamela Murphy
 Marilyn and Richard Myers
 Rita Nagusky
 Judith and Ronald Neuger
 Larry and Sharon Newman
 Robert Nickodem
 Katie Niese
 Benjamin and Sara Jane Norton
 Marcia and Martin Ontell
 Louis and Charlotte Orkin
 Debra Pando Blaushild
 David Partington and Barbara Zaas Partington
 Elmer and Eudese Paull
 Deborah and Scott Picker
 Post Up Stand, Inc.
 Thomas and Frances Powers
 Randi and Craig Price
 Leonard and Heddy Rabe
 Robert and Sylvia Reitman*
 Tricia Risman



*Dahlia Harris and
 her sons Sam and
 Mathew support JFSA's
 4th Annual "You
 Dine. They Donate."
 fundraiser benefitting
 Know Abuse.™*

Barbara Robinson*
 Patrick and Mary Roche
 Mikki and Michael Rocker
 Michael and Jodi Rogoff
 Douglas Rolfe
 Nancy Rome
 Charles and Gayle Rosenberg
 Judith Rosenthal
 Alan and Barbara Rosskamm
 Harriet Roth
 Jay and Leslie Rotsky
 Susan and Steven Rubin
 Diane Sadowski and Pete Buca
 Brenda Scales
 Nancy and Howard Schneider
 Harvey and Diane Scholnick
 Florence Schreibman
 Randall and Elise Schwartz
 Joel and Rachel Schwarz
 Daniel Schweid and Carolee Lesyk
 Jay and Sharon Seaton
 Tom and Paula Seger

Philip and Iris Seydel
 Robert and Linda Shakno
 Gary and Mary Ann Shamis
 Loren and Brenda Shapiro
 Michael Shapiro
 Hewitt Shaw
 Robert and Patricia Shiels
 Alvin and Laura Siegal
 Nessa Siegel
 Michael and Paula Sieger
 Floyd and Karen Silver
 Silver, Cooper & Co., Inc.
 Robert Silverman*
 Charles Sims
 David and Kathi SirLouis
 Gary and Pam Skoch
 Rabbi Joshua Skoff and Ilana Hoffer Skoff
 Gary and Donna Sleeman
 Bruce and Jill Smith
 Ginny and Doug Solomon
 Elizabeth Stern
 Myron Stern and Honey Massey

Recommended by these individuals from their donor advised funds of the Jewish Federation of Cleveland. **Of blessed memory *Matching gift
 We make every effort to ensure the accuracy of these lists. Please contact the Marketing & Development Department with any corrections at 216.504.6451.*



Dan Unger (picture right) from Mar-Lou Shoes helps a Holocaust Survivor get fitted for new shoes.



Susie and Brian Stern
James and Edith Stevenson
Stir Crazy
Rosalyn and William Sukenik
James and Cathryn Terchek
Leonard Tracht
Ronald and Susan Traub
Linus Vysnionis
Michael and Peggy Wager
Amy Wain Garnitz and David Garnitz
Eric and Joyce Wald
Mark and Leigh Wasserman
Maurice Weidenthal
The Adolf Weinberger Foundation
Pamela and Steven Weisman
Brittany Weiss
Cathy and Robert Weiss
Dawn and Brian Weiss

Lawrence Weissman
Michael T. Welsh
Sally and Stanley Wertheim
Barb Wheeler
Charles and Joan Whitehill
Wickens, Herzer, Panza, Cook & Batista Co.
Jill and Avery Wieder
James and Eileen Wilkoff
Timothy Williams
Tammy and Scott Wise
Evan Witt
David Wittenberg
Nancy Wolf and Aric Greenfield
Carol Wortzman
Edward Wortzman
Alex Yakubovick
Sanford and Sally Ziff

UP TO \$99

Anonymous (4)
Richard and Janet Aach
Ian and Gloria Abrams
Richard Abrams
Sandra Adamo
Cheryl and Bruce Adams
Charles** and Anne Adamson
Adele Adler
Jessie and Fred Adler
Cindy and Jerald Aizen
Leslie and Scott Alperin
Hamilton Amer and Beth Farmer Amer
Tatyana Andreev
Barbara Appel
Craig Appell
Area Temps
Myrna Arlen Bloch and Kurt Bloch
Denise Arnstine
Becky Aron
Jamie Askari
Diane Attell
Luisa Aviv
Mindi and Michael Axner
Margaret Babik
Lori Bagley
Daryl Bailey
Edward Baker and Anna Vanheeckeren
Carolyn and Jamie Bankhurst
Oren Baratz
Delphine Barrett
Robin Barrisch
Scott Bash
William and Michele Bashein
Charles and Jane Bashour
Dale and Susan Bass
Marc and Sue Bauer
Morrie and Arline Bauer
Laura Baxter Heuer
Todd and Carolyn Bayer
Harry Beer
Laura and Douglas Bell

Recommended by these individuals from their donor advised funds of the Jewish Federation of Cleveland. **Of blessed memory *Matching gift
We make every effort to ensure the accuracy of these lists. Please contact the Marketing & Development Department with any corrections at 216.504.6451.*

Ernest and Eunice Benchell
 Nancy and Jaye Benjamin
 Michael and Laura Bennett
 Sharon Berger
 Daniel and Mary Berick
 Stuart and Lora Berkowitz
 Betty and Nathan Berliner
 Steve and Sygalit Berman
 Stanley Bernath
 Susan Berneike
 Sue and Arthur Biagianti
 Amy Bilsky
 Irena Bitenbinder
 Sherri and Marc Blaushild
 Linda Bloom
 Heike Boeltzig
 Martin Bohm
 Robert Bologna
 Bond, Sippola, Dejoy & Co.
 Debbie Bonhard
 Susan and Daniel Borison
 Lori Borlin
 Tanya Borshov
 Jeremy Botkin
 Robert and Beth Brandon
 Mary Brewster
 Phyllis Brody
 Barbara and Barry Brouman
 Jean Brown
 Erwin and Leslie Bruder
 Carrie Burick
 Stacy Burkons
 Alison Burner
 Amy and Phil Bursky
 Sandra Buzney
 Benedict and L. Claire Campbell
 Wendy Cantor Dobo
 Maria Car
 David and Angela Carr
 Amy Cascio
 Sophie Chan
 Elaine Chaplin
 Nadine Chapman

Alyson Charnas
 Michael and Mimi Charnas
 Kerry and Renee Chelm
 Bonnie and Stuart Chernikoff
 Lorna and Vova Chernomorets
 Chicago Deli Solon
 Nicole Clark
 Percy and Carol Sue Clark
 Phyllis and Sidney Cohen
 Linda Cohen
 Tracey Cohen
 Lottie Cohn
 Jean Colley
 Robin and Lawrence Collins
 Johanna Conroy
 Deborah Cowan
 Jo Cowan
 Jermaine Cross
 Zsuzsa Csepanyi
 David Cunix
 Erin Curran
 Cynthia Datzman
 Carol Dayton
 Brad and Linda Demsey
 Joanne and Michael Deutsch
 Jeffery DeWerth
 Lori Diamond
 Gail Dolin
 Shari Dombcik
 Barbara Dooner
 Millicent Driver
 Joan Drnek
 William Du Gar
 Hayley Dubin
 Cherie Dubyak
 Deborah and Edward Dudley
 Susan and David Dumas
 Lucy Eckstein
 Lester and Eleanor Einhorn
 Sandra Einstein
 Matthew and Patricia Eisenberg
 Phyllis and Allan Eisenberg
 Steven Eisenberg

Michael and Suzanne Eisner
 Elite Vending Service, Inc.
 Nancy Emerman
 Norman Engel
 Bruce and Sharon Epstein
 Jeanne Epstein
 Eyewear at the Hamptons
 Ronald and Genevive Falconi
 Ann Fay
 Elizabeth and John Feighan
 Robert and Marcia Fein
 Richard Felber
 Steven and Mary Feldman
 Barbara and Steve Firstenberg
 Catherine and Richard Fishbach
 Marcy Fisher



Board member Grant Dinner (2nd left - surrounded by family) was awarded the 2011 Norman Danzig Young Leadership Award for his leadership and work with the Hebrew Shelter Home and Family Violence Services.

Nearly 300 people, including 80 professional stylists and salon owners enjoyed an afternoon of fun and fashion at JFSA's "Style It Up & Cut It Out!" Fashion Show and Luncheon celebrating the launch of its new program to educate local salons about domestic violence prevention. The event was underwritten by the Sydel and Arnold Miller Family Foundation.



Enjoying the festivities (left to right) are Lynne, Natalie and Phil Cohen, Ginny, Gadi and Hadass Galili, and Lauren Spilman.



Event co-char Trish Adler (right) with actress and guest speaker Signy Coleman.

Judy Fishman
 Sherrie Fleeter
 Christine Fondao
 Jonathan Forman
 Amy Foti
 Marcia Fox
 Barbara Framke
 Thomas Francescangeli
 Ilene and Geoffrey Frankel
 Sherman and Shirley Frankel
 Michael and Julie Frayman
 Cherie and Scott Friedman
 Ilene Friedman
 Lawrence and Donna Friedman
 Marci Friedman
 Ruth and James Friedman
 Molly and Sanford Friedson
 Jay and Hope Fromson
 Glenn and Susan Gable
 Ruth Galan
 Judith Gallagher
 Judy Garson
 Marci and Brent Garson
 Scott and Ann Garson

Joyce Garver Keller
 Nancy Gary
 Vivian Gatta
 Joel and Phyllis Gecht
 Gerald and Estelle Gerson
 Debabrata Ghosh and Sudeshna Mitra
 Melanie Giamaria
 Inderjit and Nutan Gill
 Marcie and Robert Gilmore
 David Glaser
 Beth Glosik
 Adrienne Goldberg
 Donald and Joanne Goldberg
 Scott Goldberg
 Shari Goldberg
 Laura Goldstein
 Sarajane Goldstein
 Bruce Golovan
 Gary and Karen Golovan
 Elisa Gonzalez
 Joyce Gordon
 Micki and Larry Grano
 Phyllis and Edwin Green
 Sandra Green

Janet Greenberg
 Marcia Greene
 Gail Greenfield
 Joan and Arthur Greenfield
 Rebecca Griffith
 Pauline Grodin
 M Grossberg
 Eleanor Guttman
 Bahman and Lora Guyuron
 Lisa Hacker
 Taylor Halagan
 Henry Hall
 Cassi Handler
 Cheryl and Thomas Hanger
 Ruth Hardwig
 Alysia Hardy
 Debbie and Larry Harlan
 Marilyn Harris
 Michelle Harvey
 Robert and Liedriht Heid
 Ursula Heinen
 Robert and Tammy Heksch
 Ruth and Lester Heltzer
 Frederick and Sandra Heman

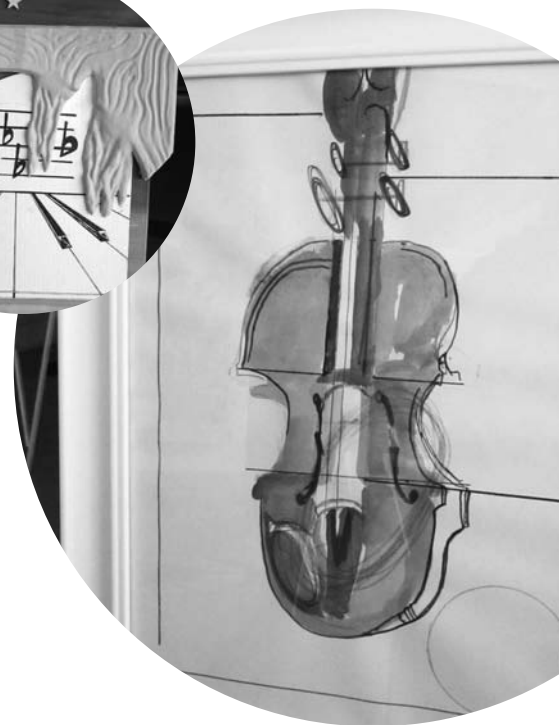
*Recommended by these individuals from their donor advised funds of the Jewish Federation of Cleveland. **Of blessed memory ***Matching gift
 We make every effort to ensure the accuracy of these lists. Please contact the Marketing & Development Department with any corrections at 216.504.6451.

Harvey Herman
 James and Carolyn Herman
 John and Laura Herrick
 Steven Hershkowitz
 Karen and Roger Hess
 Kathy Hirko
 Renee and Steven Hochman
 Holmes Family Charitable Fund
 Leo and Florine Hornik
 Gary and Kimberly Hunter
 Sandra Incorvia
 Lisa and Kenny Ingber
 Michele Innenberg
 Lara and Ronnen Isakov
 Fred and Sally Isenstadt
 Loren Israelstam
 Issi's Place, Inc.
 Adam and Melissa Jacobs
 Jerome and Rhoda Jacobs
 Bertha Jaffe
 Elizabeth Jangiti
 Mary Jasper
 JFSA Older Adult Services
 Sharon Jones
 Stephen Kadish
 Judith Kalman
 Billie Kater
 David and Jill Katz
 Evelyn Katz
 Deborah and Steven Kaufman
 Linda Kelly
 Andrea and Patrick Kennedy
 Jayna Kennedy
 Laurie and Stan Kestecher
 Anne Kilroy
 Les and Ilene Kinsley
 Henrietta Kirschenbaum**
 Ivor Kiwi
 David and Judy Klein
 Megan Klein
 Mildred Klein
 Allan and Millicent Kleinman
 Ellyn and Denny Kless

Ernest and Marcia Kline
 Irene and Roger Knipper
 Anita Koblitz
 Richard Koplow
 Sharyn and Neil Koppelman
 Blanche Korpos
 Bertram Kramer
 David and Beth Krasnow
 Brian Kresevic
 Alan and Beth Kuhel
 Barbara and Larry Kupps
 Suzanne Lahorra
 Mitchell and Theresa Lapin
 Dexter Lark
 Leanne Leavitt
 Kathy and Robert Leb
 Sharon and Jamie Lebovitz
 Todd and Lisa Lebowitz
 Ruth Lester
 Terry Lester

Adam and Nancy Levin
 Stephen and Lyn Levin
 Scott and Rochelle Lewis
 Susan Lieberman
 Lisa Linden
 Wendy Linger
 Hank Long
 Elena Lougovskaia
 Mary Ellen Lucas
 Susan Ludsin
 Annette G. Lusher
 Sandra Lusher-Waterhouse
 and Bruce Waterhouse
 Wendy Maayan
 Susan MacDonald
 Lorrie and Alvin Magid
 Kristie Major
 Ray and Nancy Malone
 Margaret and Joe Mancuso
 Elimelech and Chana Mandel

In May, clients displayed their beautiful artwork at a special reception and exhibition highlighting the music of Mozart at the Maltz Museum of Jewish Heritage in recognition of Mental Health Awareness Month.



Recommended by these individuals from their donor advised funds of the Jewish Federation of Cleveland. **Of blessed memory *Matching gift
 We make every effort to ensure the accuracy of these lists. Please contact the Marketing & Development Department with any corrections at 216.504.6451.*

Brian and Debra Mandell
 Joseph and Janette Mannarino
 Meg Manny
 John and Sharon Marcus
 Lois and Martin Marcus*
 Maxine Margolis
 Sheila Margolis
 Dale and Barbara Markowitz
 Sarah Markowitz
 Bonnie and Dan Marks
 Helen Marotta
 Wendy and Steven Marsh
 Sarah Martin
 Audrey May
 Arthur B. Mayers
 Douglas and Ruth Mayers
 Colleen McGinty
 Meg McIntyre
 Katie McKinley
 Esther Meckler
 Eugene Medovoy
 Martha Meeker
 Rosalie and Jack Meiland
 Jeffrey and Julie Melzak
 Donald and Sara Messinger
 Irina Mikhalev
 Christy Milicevic
 Bonnie Miller
 Janie Miller
 David and Kelly Millet
 Judy Morgan and Ted Welles
 Zvi Morgenstern
 Jeffrey and Glorina Morris
 Sheilah Moshogianes
 Donna Moss
 Hoyt and Gail Murray
 Nancy and Chip Muzzey
 National Alliance on Mental Illness
 James and Julia Neff
 Ann and Charles Newman
 John and Connie Niese
 Cheryl Nitowsky
 Ruth North

Paulette and Jeffrey Novak
 Caroline and Edward Oberndorf
 James and Audrey O'Donnell
 Geraldine and Rory O'Malley
 Nathan and Lenore Oscar
 Hermine and David Ostro
 Amy and Andrew Paine
 Victoria Pajestka
 Ashley Palm
 Laura Pappas
 Shirley and Harold Pasternak
 Richard and Marilyn Paulson
 Yvette Peck Newlin and Harold Newlin
 Jodi Peleg
 Erica Perkins
 Robert and Mary Hellen Peters
 Renee Petro
 Brandy Pishner
 Cindy Poll
 Mariya Pomeranets

Phyllis and Lawrence Pomerantz
 Karen Popper
 Don and Debra Posner
 Karla Kay Potetz
 Diane Powers Wright
 Keith Poynter
 Lourdes Prieto
 John Rampe
 Laura Rampe
 Thomas Rappa
 Lisa Reed
 Susan and Brett Regal
 Laura and J. Anthony Rehak
 Marjorie Reimer
 Susan and Barry Reis
 Leslie Resnik
 Allison Retter
 Lisa Richardson
 Joel and Beth Richman
 Veronica Richman Bellay
 Scott and Faye Rickoff
 Fran Riemer
 Frances Ritsky-Kluter
 Eric Ritter
 Michael and Nadia Ritter
 Ray and Thelma Rivin
 Beth Robbins
 Susan and Howard Robboy
 Rabbi Daniel Roberts and
 Elaine Rembrandt
 Heidi Robinson
 Becky and David Rocker
 Patricia Roffe
 Leslie Rosen
 Alan Rosenbaum
 Barbara Rosenberg
 Donald and Marlene Roskoph
 Barbara Rosner
 Laura Ross
 Allen and Sharon Roth
 Jennifer Roth
 Jonathan and Alice Roth
 Nancy Roth



*NFTY members (National Federation of Temple Youth) help
 JFSA's Horvitz YouthAbility members paint a parachute.*

Jordan and Arleen Rothkopf
 Eric and Patty Rubin
 Dorothy Rudick
 Sababa Cuisine Inc.
 Mark Sack
 Susan Sadler
 Rion and Cheryl Safier
 Jody Saks
 Heidi Salkin
 James Samuels
 Leah Sanford
 William Sattin
 Ilene and Allen Savin
 Megan and Mark Savransky
 Billy and Sheri Sax
 Cheryl Scharf
 Tanya Scharpf
 Rebecca Schein
 Bernard and Victoria Schmelzer
 Kristen Schneider
 Douglas and Lauren Scholle
 Sara Schrode
 Rieda Schubert
 Amy Schuman
 Stephan and Patricia Schwartz
 Gayle Schwarz
 Roslyn and Ralph Seed
 M & J Shafran Foundation
 Michael and Frani Shagrin
 Michael and Kay Shames
 Michael and Barbara Shapero
 Daniel and Dana Shapiro
 Roma and Dick Shapiro
 Laurel Sheldon
 Naomi Shiffman
 Eleanor Shoag
 Belinda and Bill Sholomon
 Heidi Shupp
 Harvey and Adrienne Siegel
 Renee Siegel
 Sue Siegler
 Loramae and Ronald Simkoff

Scott Simon
 Singer, Berger, Press & Co.
 Crystal Sloan
 Diane Smilanick and Mark Greenfield
 Marlene and Jack Soble
 Richard Solwitz
 Emily and William Sonnie
 Alise Spataro
 Dennis and Raycine Spector
 Richard and Barbara Speer
 Elizabeth and Ethan Spencer
 Donna and Howard Sperber
 Danny and Wendy Spitz
 Carl Spitznagel
 David and Deborah Stahler
 Bonnie and Jeffrey Stein
 Ellen Stein
 Terri and Howard Steindler
 Suzy Stone
 Richard and Carol Streem
 Steven and Jennifer Sulewski
 Louis and Linda Sulzer
 Timothy and Anne Swanson
 Elizabeth Swenson
 Arman Sydell Green
 Tibor and Hannah Szabo
 Barbara Tate
 Sonja Tenerove
 Pam and Harry Tepper
 Nicole Thomas
 Karen Thompson
 Sheryl and Mark Tilson
 William Toomajian
 Richard and Barbara Trau
 Maggie Tuggle
 Melanie Turner
 Terri Ulizzi
 Charles Varkala
 Emily and Matthew Vean
 Wendy Vean
 Jay Wachs
 Vandana Wadhwa

Jennifer and Stephen Wafalosky
 Justin Walton
 Marie Walzer
 Louise and Greg Warner
 Joni and Steve Wasserman
 Mary Webster
 Thomas and Doris Weil
 Martin and Jackie Weingold
 Scott and Alison Weingold
 Lori Weinstein
 Matt Weisfeld
 Jennie Weisinger
 James and Debbie Weisman
 Wendy Weisman-Dermer and Daniel Dermer
 David and Joy Weiss
 Hedy Weiss
 Leo Weiss
 Stephen and Naomi Weiss
 George and Josephine Weisz
 Stephen and Rena Wertheim
 Steven and Melinda Wertheim
 Harvey and Carol West
 Judy and Dale West
 Rachel Westrick
 Paul and Susan Wilms
 Jason and Heather Witherite
 Jack and Amy Withrow
 Elaine and Joel Wolfe
 Barbara Wolfort
 Donald and Emily Wolfson
 Emily Woods
 Daniel and Ellen Worthington
 Donna Yanowitz
 Bradley and Laurel Young
 Stanley and Gayle Young
 Marilyn and Joel Zaas
 Ileana Zacharchenko
 Laura and Roger Zeefe
 Yuri Zelenkov
 Lisa Zucker

HEBREW SHELTER HOME DONORS

Donor list represents gifts to the Hebrew Shelter Home received between July 1, 2011 and June 30, 2012.

\$20,000 PLUS

The Milton and Tamar Maltz Family Foundation
Sam and Clare Minoff*

\$10,000 - \$19,999

Anonymous
Daniel and Ellen Zelman

\$5,000 - \$9,999

Timothy and Sandy Wuliger

\$2,500 - \$4,999

Grant and Jennifer Dinner*

\$1,000 - \$2,499

Stacie and Jeffery Halpern
Melvin and Lola Kamins
Gary Kaplan and Roberta Karsh Kaplan
David and Judy Kaufman*
Hannah, Debra and Jonathan Lee
Sukenik Family Foundation

\$500 - \$999

David and Hedy Adler
Anshe Chesed Fairmount Temple
Sarajane and Samuel Dolinsky
Daniel and Paula Dreyfuss
Robert and Elayne Kwait
The Park Synagogue
Pension Solutions, Inc.
William Wortzman

\$200 - \$499

Anonymous
Jonathan Baskin and Dahna Gordon-Baskin
Yehuda and Barbara Baskin
Susan Bichsel and Steve Rusnak
Hillel Chiel and Elizabeth Dreben
Lynne and Philip Cohen*
Stacia Dearmin
Chicky Drost
Robert and Darlene Duvin
Rachel Edwards
Alfred and Harriet Fader
Lawrence and Bonnie Frankel*
Elisha and Anna Fredman
Steven and Harriet Friedman
vic and joan gelb
J. David and Rebecca Heller
Alan and Beverly Israel
Greg Marcus and Shelley Milin Marcus*
Beno and Elaine Michel
Joel and Sharon Peerless
Albert & Audrey Ratner Community Based
Human Service Fund
Laurie Rose
The Temple - Tifereth Israel
Tibor's Kosher Meat Market, Inc.

\$50 - \$199

Anonymous
Michael and Brenda Altose
Sherri Appleton and Marty Resnik
Myrna Arlen Bloch and Kurt Bloch
Denise Arnstine
Robin and Michael Avery
Ruth Baker

Marilyn and Marshall Bedol
Lynne and Irv Berliner
B'nai Jeshurun Congregation
Robert and Beth Brandon
Peter and Tamar Brosse
Joseph and Mia Buchwald Gelles
David and Avril Burg
Scott and Carol Burg
Arnold and Bonnie Caplan
Elizabeth and Keith Chelm
Florence Chelm
Barry and Lynn Chesler
Michael and Sandy Covitch
Diana R. Davis
Jeffrey and Marti Davis
Dory Doyle
Bruce and Sharon Epstein
Morton and Natalie Epstein
Deborah and Alan Erenrich
Cindy Feuer
Eric and Amy Fingerhut
Ronald Fleeter
Rina and Samuel Frankel
Ann and Marc Freimuth
Mady Friedman
Avrum and Phyllis Froimson
John and Peggy Garson
Joyce Garver Keller
Howard and Suri Goldman
Sally Good
Steven and Edith Greenberg
Walter and Esti Gumpertz
Adam and Amalia Haas
Jacalyn and Stanley Hazen
Ursula Heinen
Robin and Lenny Heiser

Recommended by these individuals from their donor advised funds of the Jewish Federation of Cleveland. **Of blessed memory *Matching gift
We make every effort to ensure the accuracy of these lists. Please contact the Marketing & Development Department with any corrections at 216.504.6451.*

John and Lori Herman
 Donald and Lynda Insul
 Alice Jacobs
 James and Gale Jacobsohn
 Suellen and Lawrence Kadis
 Jeffrey Kahn and Karen Horowitz Kahn
 Karen and Steven Katz
 Richard Katzman
 Joanne Klein and Marshall Nurenberg
 Dolores and James Kleinman
 Reed and Pam Kleinman
 Seymour and Gail Kopelowitz
 David Leavitt
 Ellyn Lefko
 Alan and Nancy Lerner
 Charles Lissauer*
 Betsy Mahlke
 Morris and Laurie Mandel
 Herbert and Cookie Marcus
 Dale and Barbara Markowitz
 Peter and Susan Meisel
 Joseph Mendes & Mollie Mendes Family
 Charitable Fund
 Barbara and Melvin Mezoff
 Lillian Milder
 Irwin and Beryl Moore
 Jeffrey and Glorina Morris
 Louise and Terry Morris*
 Barbara Moses and C. Philip Cristal
 Nachama Moskowitz
 Rita Nagusky
 Marvin and Ruth Potter
 Richard Price and Sarah Davis
 Ronald and Nancy Rafal
 Craig Raskind
 Becky and David Rocker
 David and Enid Rosenberg
 Frank and Beth Rosenberg
 Barbara Rosenthal
 Ellen Rossen
 Betty Rosskamm*
 Susan and Steven Rubin
 Erika and Hal Rudin-Luria
 Alan and Jodi Scott
 Stuart and Roberta Sears

David and Leslie Seiger
 M & J Shafran Foundation
 Rita Shtull
 Stephen and Barbara Somogyi
 Doris Sopher
 Elizabeth and Joshua Sunshine
 Jordan and Jeanne Tobin
 Philip and Hasida Toltzis
 Nancy Walsh Sogg and Wilton Sogg
 Richard and Jane Warn
 Louise and Greg Warner
 Susan Weingold
 Gail and Ed Weintraub
 Gary Weiss
 George and Josephine Weisz
 Marilyn Weston
 James and Eileen Wilkoff
 David and Carol Willen
 Darrell and Andria Young
 Kenneth and Paula Zeisler
 Alex and Ruth Zelcer
 Ruth Zilber*
 Martha Zlotnik

UP TO \$50

Anonymous (4)
 Ian and Gloria Abrams
 Ahavath Israel Charity Fund
 Barbara Appel
 Charles and Saralee Apple
 Oren Baratz
 Joel and Jill Barron
 Amy Becker
 Beverly Bedol
 Steven and Julie Belkin
 Kevin and Judy Berman
 Lois and Raymond Bernzweig
 Gary and Janice Bilchik
 Irena Bitenbinder
 Marlyn and Ari Bloch Jaffe
 Flora Blumenthal
 Richard and Jacqueline Brooks
 Arthur and Karen Brown
 Kerry and Renee Chelm

Jacqueline Chernin
 Rebecca Chesler
 Jeffrey and Carin Christie
 Jeffrey and Arielle Cohen
 Theodore and Vicky Cohn
 Robin and Lawrence Collins
 Rhoda Crabbe
 Janis and Ronald DeVito
 Joan Drnek
 Nancy Dudwick
 Leonard and Karen Ehrenreich
 Rosalyn and Jerome Ellerin
 Roberta Feinstein
 George and Bela Fischer
 Betty Forman
 Walter Frank
 Jacqueline Freedman
 Molly and Sanford Friedson



The Hebrew Shelter Home welcomes donations of kosher food, all year round, but especially during the holidays.



The Hach Family helps assemble Passover Gift bags for JFSA clients who might not otherwise be able to enjoy the holiday.

Ida Fromovitz
Bernice and Donald Gandal
Herbert Geduld
Marlyn Gilbert
Chaim Evan and Esther Goodman
Sherwin Goodman
Stanley and Beverly Gordon
Ernestine Gottesman
Jeffrey and Jodi Gottlieb
Marilyn and Melvin Granatstein
Sharon Grunspan
Jackie and Rob Hicks
Arthur and Lesley Hirsh
Mark and Lesley Holz
Jerome and Rhoda Jacobs
Matil Jacobs
Valerie Jones
Kim Joseph
Sanford** and Pearl Terry Juntoff
Suzanne and Arnold Kaufman
Deborah Klein
Jonathan and Abbie Klein
Linda and John Klein

Leslie and Robert Kleinman
N. Herschel and Maxine Koblenz
Taub and Joan Kornblut
Bertram Kramer
Marcia Kritzler
Murray and Sarah Kudroff
Esther LeBois
Marlene Lefton
Daniel Lindner
Martin and Marla Lipman
Beverly Ludwig Fisher
The Madav IX Foundation
John and Sharon Marcus
James and Susan Marder
Sheila Margolis
Jeffrey Marks
Daniel Markson
Wendy and Steven Marsh
Esther Meckler
Donna Moss
Miriam Muskin
Howard and Erika Nathan
Judith Oster

Neil and Isabel Parks
Illissa Pearlman
Susan Perl Gibaldi
Shari and Michael Perlmutter
Harvey and Marilyn Peters
Jeffrey and Ann Joy Pickholtz
Phyllis and Lawrence Pomerantz
Brian Potter
Marvin and Judith Ritzenberg
Leonard and Rhoda Robuck
Anita and David** Rosenbaum
Billy and Sheri Sax
Herbert and Retha Schabes
Tamara and Martin Schneider
Jack and Phyllis Schubert
Walter and Paula Schwartz
Leslie and David Seiger
Mark Shoag
Marvin and Judith Solganik
Igor and Tatyana Spira
Lynda and Joseph Steiner
Tena Tarler Rosner
Allan and Tanita Taub
Ronald and Natalie Titlebaum
Marla Weisberg
Leah Weiss Caruso and Rabbi Joshua Caruso
Leo Weiss
Stephen and Naomi Weiss
Nancy Whitman
Michael and Miki Wieder
David and Tamara Wilkoff
M. Cory Zucker

Recommended by these individuals from their donor advised funds of the Jewish Federation of Cleveland. **Of blessed memory *Matching gift
We make every effort to ensure the accuracy of these lists. Please contact the Marketing & Development Department with any corrections at 216.504.6451.*

PLAN DONORS

Donor list represents gifts to PLAN (Planned Lifetime Assistance Network of Northeast Ohio) received between July 1, 2011 and June 30, 2012.

\$2 MILLION PLUS

Maltz Family Foundation

\$10,000 - \$50,000

Ceres Foundation

Gerry and Marty Conway

Kent and Jerrye Hayes

The Milton and Tamar Maltz Family Foundation

\$2,500 - \$9,999

Gerald and Beatrice Camiener

Peter and Rita Carfagna

William and Loretta Cosgrove

Morton and Carol Frankel

C. Mark Hayes

\$1,000 - \$2,499

David and Michele Camiener

Stuart Conway

Michael and Nicol Coxon

Harvey and Norma Kotler

Henry (Ned) and Dorothy Seibert

Jeffrey and Mary Sopko

Wells Fargo Advisors

Jonathan Wise and Cheryl Davis

\$250 - \$999

John Beletic and Anne Turner Beletic

Neil and Laurel Conway

Josephine and Pieter de Haseth

Mary Meredith Dobyns

Grafix

Robin Herrington-Bowen

Lawrence and Karen Katz

Bruce Kendrick

Vickie and Gregory Leyes

Howard and Sue Maier

Homer** and Jean McDaniel

Claudia Metz

Mary Murphy

Preformed Line Products***

Robert and Peggy Ratcheson

Robert and Juanita Storey

Jonathan and Rochelle Straffon

The Nathan Wisneski Fund

David and Amy Woodard

Marilyn Woodard

\$100 - \$249

Anonymous

John** and Donna Beletic

Blanche Bertaud

Susan Bichsel and Steve Rusnak

Barbara Bolek

Lance Buhl

Gerald Conway

Jean and John Cregan

Margaret Daugherty

Greg and Edie Dore

The GE Foundation***

Nancy and Ted Goble

James Goldsmith and Nancy Shaw Goldsmith

Ann Harmon

William and Constance Hawke

L. Douglas and Jeannette Lenkoski

Lillian Milder

Jeffrey Moss

Harold and Patricia Musick

Helen and David Nagusky

William and Barbara Oberdick

Richard and Marilyn Paulson

Clara Rankin

Charles and Maxine Rosenbaum

Nancy and Christopher Roy

Ronald and Marcia Schumann

Martin Spiegel

Richard and Sue Stark



PLAN Members Neil Conway (left) and Neil Heller (right) participate in the PLAN Office Volunteer Program, which prepares large mailings for local non-profits.

Terri and Howard Steindler

Rebecca Storey

Raymond and Donna Timko

Stephanie and Nicholas Ulmer

Scott and Cathy Wallenstein

William and Judy Weber

Gail and Ed Weintraub

Donna Wetzel

Stephen and Wendy Zinn

UP TO \$99

Barbara Appel

Sheldon Artz and Jan Jones

Sandra Buzney

Donald and Therese Cairns

Howard Danzinger

James and Mary Derrick

Theodore and Catherine Fabyan

Robert and Adele Himler

Florence and Joseph Hrusch

Stuart and Theresia Kline

Robert Lustig

Theodore Lux

Sylvia and Victor Matthews

Bruce Rankin

Lynn and Kennan Salzbrenner

Eda Weiss

Marian Wetzel

***Of blessed memory ***Matching gift*

We make every effort to ensure the accuracy of these lists. Please contact the Marketing & Development Department with any corrections at 216.504.6451.

IN-KIND DONATIONS

JFSA, Hebrew Shelter Home and PLAN are extremely appreciative of the many in-kind goods and services received by the following individuals and organizations between July 1, 2011 and June 30, 2012.

Agnon School
Albert Furs
James Alperin Jewelers
Alson Jewelers
Bill Amato
American Logistics Group
Amy's Shoes
Anshe Chesed Fairmount Temple
Aaron Appell
Craig Appell
Applied Laser Technologies, Inc.
Audrey's Sweet Threads
The Barkley
Norman and Ferne Barr
BBYO of Cleveland
The Beachwood Happy Hookers
Beachwood High School
Beecology
Berger & Silver Jewelers
Block Bros.
B'nai Jeshurun Congregation
Bonnie's Goubaud
Bravo Brio Restaurant Group, Inc.
Mark and Lisbeth Bulmash
Michelle Cameron
Stephen and Linda Campbell
Sharon Carmosino
Cedar Audiology
Cindy Chaiten
Linda and Howard Chapman
Charisma Hair Design
Cheek 2 Cheek
Andrew and Lucy Chess
Ciuni & Panichi

Cleveland Clinic Lifestyle
Cleveland Groove, LLC
The Cleveland Indians
The Cleveland Playhouse
Ray Cofta
Ethan and Gena Cohen
Lynne and Philip Cohen
Nan Cohen and Daniel Abrams
Dr. Sydney and Phyllis Cohen
Basha Cohn
Congregation Shaarey Tikvah
Corky & Lenny's
Designers Touch
Alberto Dick

Dick's Sporting Goods
Pat and Laurie Dittoe
Sarajane and Samuel Dolinsky
Rosalyn and Jerome Ellerin
Marilyn Ettinger
Eyewear at the Hamptons
Ronald Farhi
Jordan Fiksenbaum
Finished Finger
Pamela Fink
Fish Furniture
Fleet Feet Sports
Fleming's
Flowers by Stazzone
Fuchs Mizrachi School
Diane Glazer
Glick Dental Associates
Bruce and Amy Good
Sally Good
Gramercy Design
Green Road Synagogue
Joel Grodin
Lucille Gross
Gross Schechter Day School
Richard and Dolores Gurka
Hairways Beauty Salon
Hebrew Academy of Cleveland
Rebecca and J. David Heller
Robin Herrington-Bowen
B.J. Hoffman
Nancy Hoffner
Claire Huntington
Marc and Leslie Insul



JFSA Volunteer Francine Blumin stocks her car with fresh meals to be delivered to homebound seniors.

InterContinental Hotel
 Jerusalem Grill, LLC
 Jewish Federation of Cleveland
 Jewish Relief Society
 Joss
 Suellen and Lawrence Kadis
 Annette Keys
 Dan Klein
 Michael Klein
 Knuth's
 Kol Halev
 Jill Koslen
 Donna Kramer
 Ladies and Gentlemen Salon and Spa
 Karen Leizman Moses and Barry Moses
 David and Karen Levin
 The Melting Pot
 Lisa Moran Ltd.
 The Locksmith Hair Studio
 Lombard Interiors
 Sandra Lusher-Waterhouse and
 Bruce Waterhouse
 Maltz Museum of Jewish Heritage
 The Mandel Foundation
 Mandel Jewish Community Center
 Greg Marcus and Shelley Milin Marcus
 Martin and Lois Marcus
 Wendy and Steven Marsh
 Matina's Bridal
 Metropolitan Market
 Ann Meyers
 Mindful Designs
 Sam and Clare Minoff
 Mitchell's Fish Market
 Moxie
 Mulholland & Sachs
 Nails & Co.
 National Council of Jewish Women,
 Cleveland Section
 Notoriety
 Ohio State University Extension
 Judy Oppenheimer
 The Original Pancake House

Oscar Giovanni Hair Salon & Spa
 Paladar
 The Park Synagogue
 Pat O'Brien's Fine Wine & Spirits
 Penello Gallery
 Shari and Michael Perlmutter
 Pizzaz Restaurant
 Elisabeth Plax
 Playmatters
 The Powder Room Makeup Oasis &
 Boutique
 Purly Girl Knits
 Sue Radkin
 Susan Rapoport
 Richard and Carla for Hair
 Robert & Gabriel
 The Rock and Roll Hall of Fame and
 Museum
 Richard Rosner
 Carrie Rudow
 Fred and Anne Rzepka
 Saks Fifth Avenue
 Beth Segal Photography
 Mitch and Sandy Shaheen
 Jessica Shapiro
 Sheraton Furniture
 Allison Shippy
 David and Faye Sholiton
 Robert and Eileen Sill
 Dr. Jeffrey Silver, D.D.S.
 Dr. Peter Smilovits, D.D.S.
 Alice Smith
 SS&G Financial Services, Inc.
 Mark Steinberg
 Stellar Benefits
 Todd Stern
 The Stone Oven
 Suburban Temple-Kol Ami
 Will and Jan Sukenik
 TAZA Lebanese Grill
 Temple Emanu El
 The Temple - Tifereth Israel
 Tommy's Studio 4 Hair

Trader Joe's
 UBS Financial Services
 Umami Asian Kitchen
 Dr. Timothy Vala, D.D.S.
 Waterway Car Wash
 Joel and Gina Weisblat
 Western Reserve Wines
 White Dove Mattress Ltd.
 Whole Life Dentistry
 Winds of Change
 Don Wismer
 Nancy Wolf and Aric Greenfield
 Deborah and Randy Woolfork
 William Wortzman
 The Wortzman Company
 Timothy and Sandy Wuliger
 Darrell and Andria Young



Three-year-old
 McKenna (daughter
 of staff member
 Jamie Brown) enjoys
 helping at the 2012
 Kosher Rib Burn-Off.

JFSA VOLUNTEERS

During FY12, JFSA, Hebrew Shelter Home and PLAN volunteers provided 16,989 hours of service to the community through a variety of volunteer activities, including delivering meals to home-bound seniors twice a week, visiting with Holocaust Survivors, participating in teen outreach education and many other activities that support JFSA's mission. Because these services are delivered by volunteers, JFSA saves approximately \$320,582 a year. JFSA, Hebrew Shelter Home and PLAN could not be successful without these volunteers and we thank them for their tireless efforts.*

Betty Berliner is recognized by CEO Susan Bichsel, PhD, for her amazing 45 years of volunteer service to JFSA.



Robin Abrams
Allison Agin
Agnon School
Cindy Aizen
Sanford Asnien
Shosh Ault
Linda T. Azoff
BBYO Chaia Chapter
BBYO Genesis Chapter
BBYO Star of David
B'nai Jeshurun Congregation
Kemai Ballard
Kaelyn Banks
Max Barnett
Marina Baskin
Rachael Baum
Ernest Benchell
Betty Berliner
Stanley Bernath
Pam Bertaud
Maxine Bilchik
Judy Blum
Francine Blumin
Mary Boksansky
Ariel Bolden
Tyler Bond
Hannah Borison
Boy Scouts 95
Kristen Boyesen
Betti Buck
Susan Burkhardt
Beverly E. Byrd-Lloyd
Nicole Caine
Sandra Carrel
Linda Chapman
Bruce Chelnick
Sophia Cheng
Carly Chernomorets
Josh Chernomorets
Nate Chernomorets
Andrew Chess
Lucy Chess
Alvah Chisholm
Barb Clemente

Dan Clemente
Gena Cohen
Phyllis Cohen
Laurel Conway
Neil Conway
Arielle Cronig
Jeremy Cronig
Cub Scout Pack 119
Zoe Davidson
Diller Teen Fellows
Greg Dore
Tasha Dore
Marilyn Erlechman
Rick Faluski
Alice Fingerhut
Hannah Firestone
Halle Fromson
Fuchs Mizrachi School
Carl Gains
Mark Ghazal
Dwight Gilmore
Nancy Gluck
Basya Gluzman
Brad Goble
Erika Gold
David Goldfinger
Bentzion Goldman
Francine B. Goldsmith
Sari Gonick
Marissa Grano
Michael Ann Grano
Rachel Greene
Lee Haas
Grace Hager
Jamie Hall
Neil Heller
Sharon Hirsh
Elise Holman
Megan Horn
Lisa Huendorf
Lisa Ingber
Beth Innenberg
Louis Innenberg
Bertha Jaffe

*State of Ohio 2010 rate of \$18.87, www.independentsector.org. In 2011, the national average was \$21.79.

We make every effort to ensure the accuracy of these lists. Please contact the Marketing & Development department with any corrections at 216.504.6451.

Brian Jasper
Jewish Federation of
Cleveland-Young Leadership
Division/Women's
Philanthropy Initiative/Jewish
Volunteer Network

Jewish Relief Society

Carol Johnson

George Julien

Milton Kaden

Meir Kamchaji

Nora Kancelbaum

Fern Kendis

Scott Kendis

David Kendrick

Beryl Khabeer

Svetlana Kleinerman

Dolores J. Kleinman

Ernest Kline

Marcia Korenstein

August Kovacic

Amy Kramer

Gilbert Krantz

Eleanor E. Krongold

Ronald Kulberg

Sydney Lapin

Stanley Lasky

Anita Lechner

Herman Leggon

Tahzae Letcher

Seth Lettovsky

Marjorie L. Levine

Jeff Levinson

Rachel Lieberman

Emily Ludwig

Leonard Lurie

Taylor Lurie

Annette G. Lusher

Hitomi Maeno

Matt Maier

Sarah Markowitz

David Maxey

Savanna McCarthy

Bryson Mercer

Jeff Michaels

Megan Michaels

Loretta Milder

Rochelle Modica

Glenn H. Moore

Bob Murphy

Daryl Musick

Pat Musick

Janisse Nagel

National Council of Jewish

Women - Cleveland

Monica Nemeth

Ethan Newburger

NFTY-NEL

Judy Nisman

Austin Oberfeld

Park Synagogue

David J. Partington

Nadar Pecha

Koby Picker

Yolana Posta

Leslie Powell

Eva Racz

Bruce Rankin

Thelma Rivin

Danyelle Roan

Scott Robertson

Jacob Rogers

Jenny Rosenberg

Raquel Rosenberg

Marcie Rosenthal

Elana Ross

Jaime Rotsky

Kelly Rubanenko

Andrew Sandor

Anna Schaumburg

Nate Schneider

Carole Schonberg

Maude Shafron

Alexa Shankman

Ford Shelton

Steve Shucard

Sonya M. Shultz

John R. Siff

Robyn Silver

Lynda Simon

Rachel Slack

Maureen Sokolov

Vivian Solganik

Dennis M. Spector

Howard Sperber

Brianna Stack

Trudy Stearns

Celia Steinhoff

Susie Stern

Todd Stern

Dana M. Stratz

Suburban Temple - Kol Ami

Donna Sulzer

Laurel Sutherin

Hannah Szabo

Tibor Szabo

Sherry Tanious

Temple Emanu El

The Temple-Tifereth Israel

Michael Tesler

Yael Tesler

Jason Timko

Marieo Vassar

Vladimir Vaynshteyn

Allegra Verlezza

Marie Vishon

Jennifer Walinsky

Adrienne Wasserman

Melvin S. Wasserman

Bruce L. Waterhouse

Maya Watson

Margy Weinberg

Jonah Weinstein

Aliza Weiss

Emily Weiss

Stan Weiss

Gail Wetzel

John Wetzel

Joyce Wetzel

Ronald Wiesenthal

Brianna Williams

Jeff Williams

Jerad Williams

Louiza Wise

Ian Wisneski

Gary Woodard

Melanie Young

Marilyn Zaas

Megan Zabiegala

Olga Zullig

2012 JFSA VOLUNTEER RECOGNITION AWARDS



Long-time JFSA volunteer Thelma Rivin (left) receives the Lois Zaas Volunteer of the Year Award from Don Zaas.



Brianna Stack (center) receives the 2012 Kim Chapman Young Adult Volunteer Award from Linda and Howard Chapman.



Art Therapist Pam Bertaud (left) receives the 2012 PLAN Volunteer of the Year Award from Jacquie Houser.

We make every effort to ensure the accuracy of these lists. Please contact the Marketing & Development department with any corrections at 216.504.6451.

PROGRAMS & SERVICES

ASCENTIA: PATHWAYS TO COMMUNITY LIVING

Services and Housing for Individuals with Disabilities

216.292.3999 | www.ascentia.org

- Housing & Residential Services
- Clinical & Therapeutic Services
- Community Support Services
- Work & Recreational Services
- Family Advocacy & Support Services
- Cognitive Enhancement Therapy (CET)
- Horvitz YouthAbility program
- Adult Day Support

PLAN OF NORTHEAST OHIO

[Planned Lifetime Assistance Network]

Membership based activities for people with mental illness

216.321.3611 | www.planneohio.org

- Holistic Recovery
- Vocational Opportunities
- Lifetime Planning
- Access to Family Advocacy Services

CENTER FOR COGNITION AND RECOVERY, LLC.

Provider of CET Cleveland™ programming and training

216.504.6428 | www.cetcleveland.org

COLLEGE FINANCIAL AID PROGRAM

Scholarships, grants and loans for college students

216.292.3999 | www.jfsa-cleveland.org

**WE ARE JFSA.
STRENGTHENING FAMILIES.
BUILDING COMMUNITY.**

JFSA CARE AT HOME

Services and Home Care for Older Adults

216.378.8660 | www.jfsacareathome.org

- Skilled Nursing and Private Duty Home Care
- Therapy (Physical, Occupational, Speech)
- Home Health Aides, Medical Social Workers, Companionship and Transportation
- Kosher Home Delivered Meals
- JFSA Lifeline emergency medical alert
- Individual and Family Counseling
- Homemaking, Personalized home management and Deep Cleaning
- Geriatric Care Coordination
- Sleep-Over Services
- Holocaust Survivor Support Services

FAMILIES AT RISK SERVICES

Safety-Net Services for Homeless or At-Risk Women and Families

216.378.3420 | www.knowabuse.org

- Know Abuse™ Teen Dating Violence Prevention and Outreach
- Know Abuse™ Family Violence Services
- Justice System Advocacy & Legal Assistance
- Support Groups, Community Education & Professional Training
- Emergency Financial Assistance Fund (a joint program of JFSA and the Jewish Federation of Cleveland)
- Jewish Community Employment-Related Support Program (a joint program of JFSA and the Jewish Federation of Cleveland)
- Mesila Cleveland financial literacy for families in need

HEBREW SHELTER HOME

Emergency shelter and short term housing

216.401.9925 | www.jfsa-cleveland.org





Lake Erie

OUR COMMUNITY IS OUR CAMPUS



2011-2012 AWARDS & RECOGNITION

2011 SAMHSA (*Substance Abuse and Mental Health Services Administration*) Science and Service Award

2012 OANO (*Ohio Association of Non-Profit Organizations*) Program Excellence Award

2012 AJFCA (*Association of Jewish Family & Children Agencies*) KOVOD Award

2012 Ohio Department of Mental Health Resiliency Award

2012 Plain Dealer Top Workplace



We are JFSA. Strengthening Families. Building Community.

Jewish Family Service Association of Cleveland
3659 S. Green Road, Suite 322, Beachwood, OH 44122
216.292.3999 | www.jfsa-cleveland.org

Follow us on:



MEMBER: Jewish Community Federation of Cleveland, United Way Services, Association of Jewish Family and Children's Agencies (AJFCA), International Association of Jewish Vocational Services (IAJVS), Ohio Council of Behavioral Healthcare Providers, Ohio Providers Resource Association, Ohio Domestic Violence Network, Jewish Women International, Tina Project. **CERTIFIED:** Ohio Department of Mental Health, Medicare and Medicaid **LICENSED:** Ohio Department of Mental Health, Ohio Department of Developmental Disabilities **ACCREDITED:** Commission on Accreditation of Rehabilitation Facilities (CARF) **CONTRACT AGENCY:** Western Reserve Area Agency on Aging (WRAAA), PASSPORT, OPTIONS, Cuyahoga County Board of Developmental Disabilities, Alcohol, Drug Addiction and Mental Health Services Board of Cuyahoga County, Cuyahoga County Department of Human Services, Ohio Department of Job and Family Services, Summit County Board of Developmental Disabilities.

JFSA is a 501(c)(3) non-profit organization. JFSA is a Drug Free Workplace. JFSA is proud to serve all families regardless of religious affiliation.

Partner Agency of
Jewish Federation
OF CLEVELAND



AJFCA
Association of
Jewish Family
& Children's Agencies

